

# FINE JEWELS

NEW YORK | 25 SEPTEMBER 2019



Sotheby's EST. 1854





FINE  
JEWELS



THIS PAGE  
LOT 1

# FINE JEWELS

**AUCTION IN NEW YORK  
25 SEPTEMBER 2019  
SALE N10129**

**ALL EXHIBITIONS FREE  
AND OPEN TO THE PUBLIC**

Friday 20 September  
10 am-5 pm

Saturday 21 September  
10 am-5 pm

Sunday 22 September  
1 pm-5 pm

Monday 23 September  
10 am-5 pm

Tuesday 24 September  
10 am-5 pm

1334 York Avenue  
New York, NY 10021  
+1 212 606 7000  
sothebys.com

FOLLOW US @SOTHEBYS  
#SOTHEBYSJEWELS

**CERTIFICATES OF AUTHENTICITY**

Various manufacturers may not issue certificates of authenticity upon request. Sotheby's is not under an obligation to furnish the purchaser with a certificate of authenticity from the manufacturer at any time. Unless the requirements for a rescission of the sale under the Terms of Guarantee are satisfied, the failure of a manufacturer to issue a certificate will not constitute grounds to rescind the sale.

**GEMOLOGICAL CERTIFICATES & REPORTS**

References in the catalogue descriptions to certificates or reports issued by gemological laboratories are provided only for the information of bidders, and Sotheby's does not guarantee and accepts no responsibility for the accuracy, terms or information contained in such certificates or reports. Please also note that laboratories may differ in their assessment of a gemstone (including its origin and presence, type and extent of treatments) and their certificates or reports may contain different results.

**275**  
YEARS  
EST. 1744

**Sotheby's**  
EST. 1744

## SPECIALISTS FOR THIS SALE



David Bennett  
*Worldwide Chairman*  
*International Jewelry Division*  
+1 41 22 908 4842  
david.bennett@sothebys.com



Gary Schuler  
*Chairman*  
*North and South America*  
+1 212 606 7095  
gary.schuler@sothebys.com



Carol Elkins  
*Senior Specialist*  
+1 212 606 7062  
carol.elkins@sothebys.com



Frank Everett  
*Sales Director*  
+1 212 894 1902  
frank.everett@sothebys.com



Catharine Becket  
*Senior Specialist*  
+1 212 894 1027  
catharine.becket@sothebys.com



Robin Wright  
*Senior Specialist*  
+1 212 894 1246  
robin.wright@sothebys.com



Alexander Eblen  
*Senior Specialist*  
+1 212 894 1742  
alexander.eblen@sothebys.com



Quig Bruning  
*Specialist*  
+1 310 786 1860  
quig.bruning@sothebys.com



Kendall Reed  
*Specialist*  
+1 212 894 1137  
kendall.reed@sothebys.com



Joanna Wheeler  
*Associate Cataloguer*  
+1 212 894 1491  
joanna.wheeler@sothebys.com



Vivian Chen  
*Associate Cataloguer*  
+1 212 894 1918  
vivian.chen@sothebys.com



Anna Ruzhnikov  
*Associate Cataloguer*  
+1 212 894 1041  
anna.ruzhnikov@sothebys.com

## SPECIALISTS AND AUCTION ENQUIRIES

For further information on lots in this auction please contact any of the specialists listed below.

**SALE NUMBER**  
N10129 "CAMO"

**BIDS DEPARTMENT**  
+1 212 606 7414  
fax +1 212 606 7016  
bids.newyork@sothebys.com

Telephone bid requests should be received 24 hours prior to the sale. This service is offered for lots with a low estimate of \$5,000 and above.

**HEAD OF FINE JEWELS SALES**  
Kendall Reed  
kendall.reed@sothebys.com  
+1 212 894 1137  
fax +1 212 606 7014

**SALE ADMINISTRATOR**  
Lucy Green  
lucy.green@sothebys.com  
+1 212 894 1025

**POST SALE SERVICES**  
Rebecca Kraus  
*Post Sale Manager*  
rebecca.kraus@sothebys.com  
+1 212 606 7444

**PAYMENT, DELIVERY AND COLLECTION**  
+1 212 606 7444  
FAX +1 212 606 7043  
uspostsaleservices@sothebys.com

**CATALOGUE PRICE**  
\$45 at the gallery

**FOR SUBSCRIPTIONS CALL**  
+1 212 606 7000 USA  
+44 (0)20 7293 5000  
for UK & Europe

**CONSULTANT**  
Lexi Yost

**CONDITION REPORTS**  
Sotheby's Jewelry department is pleased to offer to potential purchasers Condition Reports of the lots in this catalogue. A Condition Report is an opinion describing in more depth the lot with regards to, but not limited to, the general condition, quality of stones and/or other relevant information.

**PLEASE CONTACT**  
NewYorkJewels@sothebys.com  
+1 212 606 7392

**DECORATIVE PHOTOGRAPHY**  
SquareMoose  
New York  
+1 212 643 2505







## CONTENTS

5	AUCTION INFORMATION
7	SPECIALISTS & AUCTION ENQUIRIES
10	FINE JEWELS: LOTS 1–359
251	CONDITIONS OF SALE
253	TERMS OF GUARANTEE ADDITIONAL TERMS AND CONDITIONS FOR LIVE ONLINE BIDDING
254	BUYING AT AUCTION
257	SELLING AT AUCTION SOTHEBY'S SERVICES INFORMATION ON SALES AND USE TAX
258	IMPORTANT NOTICES
260	RING SIZE CHART
261	DIAMOND CLARITY GRADING DIAMOND COLOR GRADING GLOSSARY OF TERMS
262	DIAMOND LIST
263	COLORED STONE LIST
264	INTERNATIONAL DEPARTMENTS
265	HOW TO BID
268	INDEX OF MAKERS



THIS PAGE  
LOTS 357 & 82

# SESSION ONE

NEW YORK  
WEDNESDAY  
25 SEPTEMBER 2019  
10:00 AM

LOTS 1-177

Please note these lots are  
not shown in actual size



PROPERTY OF A LADY

**CHALCEDONY AND MOTHER-OF-PEARL  
PEARL 'MAGIC ALHAMBRA' NECKLACE  
AND PAIR OF EARCLIPS, VAN CLEEF &  
ARPELS**

The six quatrefoil-shaped motif necklace composed of lace agate, white mother-of-pearl and gray mother-of-pearl on a fine link chain, length 16½ inches, signed VCA, numbered JE093794; with a pair of matching earclips, signed VCA, numbered JE066577, fitted with posts.

*Please note this property cannot be shipped internationally due to endangered species materials.*

• US\$ 8,000-12,000





2

---

PROPERTY FROM THE PERELMAN FAMILY  
**GOLD AND DIAMOND 'VINTAGE  
ALHAMBRA' NECKLACE, VAN CLEEF &  
ARPELS**

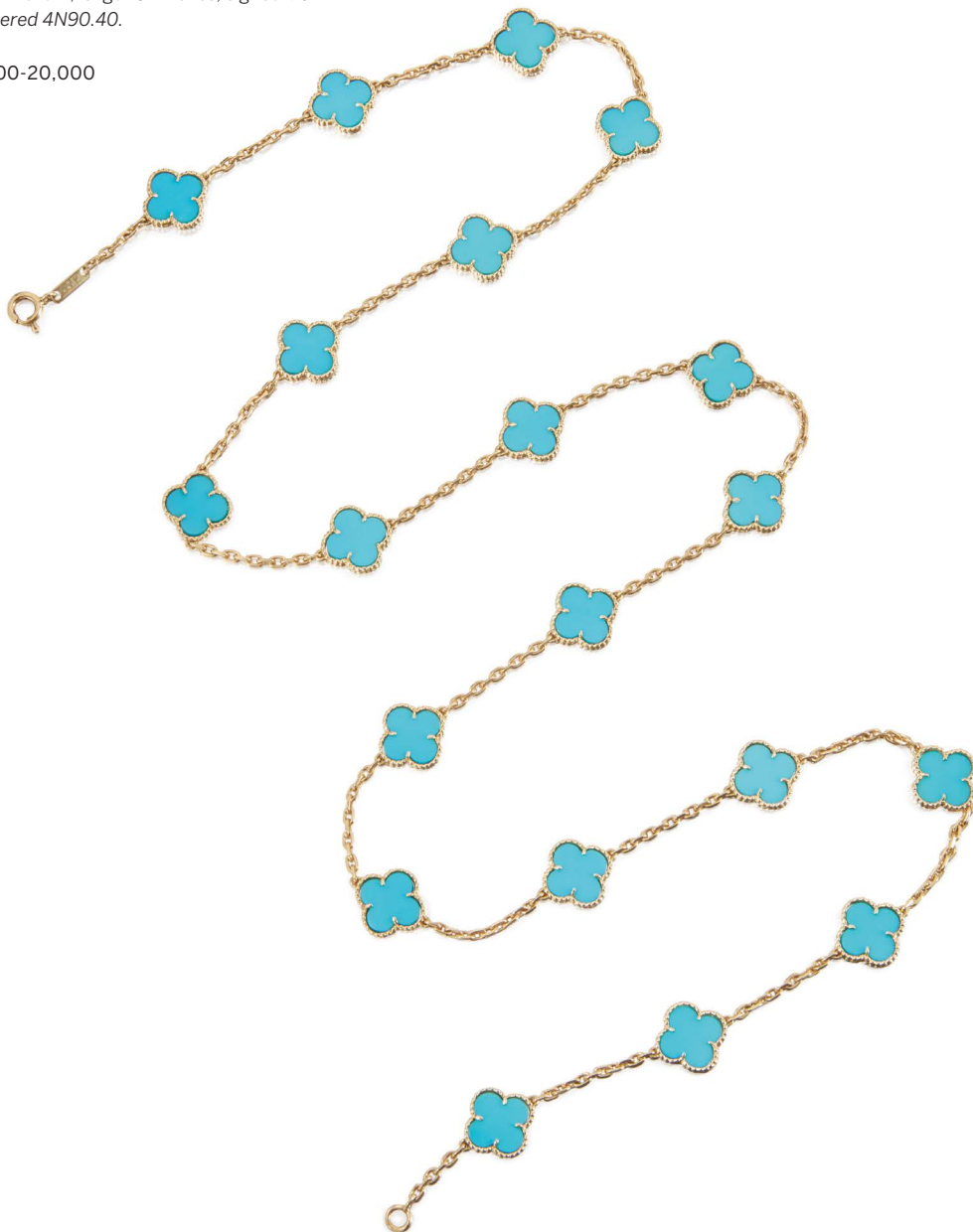
Set with ten quatrefoil-shaped textured gold motifs accented by round diamonds on a fine link chain, length 16½ inches, signed VCA, numbered BL4984.

US\$ 12,000-15,000

**TURQUOISE 'VINTAGE ALHAMBRA'  
NECKLACE, VAN CLEEF & ARPELS**

Featuring 20 turquoise quatrefoil-shaped motifs  
on a fine link chain, *length 34 inches, signed VCA  
N.Y., numbered 4N90.40.*

US\$ 15,000-20,000



---

PROPERTY OF A COLLECTOR

**GOLD 'VINTAGE ALHAMBRA'  
NECKLACE, VAN CLEEF & ARPELS,  
FRANCE**

Composed of 19 textured gold quatrefoil-shaped motifs, spaced by fine link chain, gross weight approximately 36 dwts, *length 30 inches, signed VCA, numbered CL 12967, with French assay and workshop marks.*

US\$ 10,000-15,000



**LAPIS LAZULI 'ALHAMBRA' NECKLACE,  
VAN CLEEF & ARPELS**

Featuring 10 lapis lazuli quatrefoil-shaped motifs spaced by a fine link chain, *length 31½ inches*  
*signed VCA NY, numbered 4K838.96.*

US\$ 15,000-20,000





PROPERTY OF A LADY

**TIGER'S EYE 'VINTAGE ALHAMBRA'  
NECKLACE, VAN CLEEF & ARPELS**

Composed of 20 tiger's eye quatrefoil-shaped motifs on a fine link chain, length 33 $\frac{3}{8}$  inches, signed VCA, numbered JB367150.

US\$ 10,000-15,000



PROPERTY FROM A PRIVATE FLORIDA  
COLLECTION

**CULTURED PEARL AND DIAMOND  
NECKLACE, VAN CLEEF & ARPELS,  
FRANCE**

Designed as a torsade composed of eight strands of cultured pearls measuring approximately 4.0 to 3.5 mm, completed by a stylized clasp set with round and baguette diamonds, *length 16¾ inches, signed Van Cleef Arpels, numbered 33197, with French assay and workshop marks.*

US\$ 3,000-5,000



PROPERTY FROM AN ESTATE, FLORIDA AND COLORADO

**EMERALD AND DIAMOND CLIP-BROOCH, VAN CLEEF & ARPELS, FRANCE**

Of foliate design, adorned with round emeralds and diamonds, *signed Van Cleef & Arpels, numbered 82.180, with French assay and workshop marks.*

US\$ 6,000-8,000



**PAIR OF GOLD AND DIAMOND EARCLIPS, VAN CLEEF & ARPELS, FRANCE**

Of floral design, the centers set with round diamonds, *signed Van Cleef & Arpels, numbered C.S.463, with French assay and workshop marks.*

US\$ 15,000-20,000



**GOLD AND ENAMEL 'DOT LOSANGE'  
BRACELET AND PAIR OF EARCLIPS,  
SCHLUMBERGER FOR TIFFANY & CO.**

The bracelet applied with green 'pailonné' enamel, decorated with gold dots and lozenges, spaced by fluted gold, together with a pair of earclips of similar design, total gross weight approximately 126 dwts, *bracelet internal circumference 6¾ inches, each signed Tiffany & Co., Schlumberger, with French assay and workshop marks. With signed box.*

US\$ 15,000-20,000



PROPERTY OF A PRIVATE COLLECTOR

**PAIR OF GOLD PENDANT-EARCLIPS,  
TIFFANY & CO.**

Of stylized chain-link design, suspending detachable pendants of similar design, gross weight approximately 43 dwts, *signed Tiffany & Co.*

US\$ 4,000-6,000



**GOLD, CORAL AND TOURMALINE RING,  
VAN CLEEF & ARPELS, FRANCE**

Centering a cushion-cut green tourmaline, the stylized foliate mounting adorned with coral cabochons, size 6¼, *signed VCA, numbered B5932 K2, with French assay mark.*

*Please note this property cannot be shipped internationally due to endangered species materials.*

• US\$ 15,000-20,000



**PAIR OF ROCK CRYSTAL EARCLIPS,  
SEAMAN SCHEPPS, AND PAIR OF SHELL  
AND GEM-SET EARCLIPS, TRIANON**

One pair featuring rectangular rock crystal cabochons, accented with gold ropetwist, signed *Seaman Schepps*, numbered 7473, with maker's mark; and another pair composed of shells studded with emerald and lapis lazuli cabochons, signed *Trianon*, numbered 14101.

*Please note this property cannot be shipped internationally due to endangered species materials.*

⦿ US\$ 3,000-5,000





14

---

**CORAL AND DIAMOND NECKLACE  
AND BRACELET, VAN CLEEF & ARPELS,  
FRANCE**

Designed as torsades, each composed of 12 strands of coral beads, the clasps embellished with round and baguette diamonds, *the necklace signed and the bracelet partially signed Van Cleef Arpels, the necklace partially numbered, the bracelet numbered 33.50, each with French assay and maker's marks.*

*Please note this property cannot be shipped internationally due to endangered species materials.*

© US\$ 15,000-20,000

# BULGARI 'MONETE' JEWELS: TOKENS OF GLAMOUR

LOTS 15-24

The tradition of mounting ancient coins dates to the third century in Rome. Coinage was viewed as a reflection of the current ruler's regime, and a form of public art. The carved portraits were an opportunity to remind subjects of their ruler's stature, and special attention was paid to ensure they were exquisitely carved and masterfully struck. The Romans would wear gold coins mounted in pendants as a sign of luxury status and pride.

Nicola Bulgari's passion and knowledge bloomed first when his father took him to learn about coins from the Roman Republic at age 11. The infatuation continued to influence him throughout his career, and the Monete collection was a natural

manifestation. To maintain the historical and educational characteristics of the coins, Nicola would often engrave three facts on the reverse of the settings.

Examples could include the politician, the location, the type of coin, and the dates it was issued.

The incredible collection of 'Monete' jewels that grace these pages are some of the best designs the firm created. Whilst collectors might be most familiar with ancient coins being featured in necklaces, it is more rare to find examples mounted in rings, earrings, and gem-set brooches, like the ones on offer this fall. These coins, encased in gold, highlighted by diamonds and suspended by 'Gourmette' chains or Tubogas bands, make a dynamic and truly fabulous statement.



---

PROPERTY FROM A FAMILY COLLECTION

**GOLD AND ANCIENT COIN NECKLACE,  
BULGARI**

Designed as a gold flattened curb link chain, embellished with four silver ancient Greek coins each featuring Athena wearing a Corinthian helmet with a Pegasus on the reverse, the bezels each inscribed 'Stateres Corinto 386 - 307 A.C.', gross weight approximately 126 dwts, *length 16¼ inches, signed Bulgari.*

US\$ 10,000-15,000



16

---

**GOLD AND ANCIENT COIN RING,  
BULGARI**

Bezel-set with an ancient bronze coin featuring the profile of Constantius II, in a fluted mounting accented with two baguette diamonds, the shank interior inscribed 'Costanzo II, 323 - 361', gross weight approximately 12 dwts, size 5½, signed *Bulgari*, with workshop mark, Italian assay and registry marks.

US\$ 4,000-6,000



17

---

**PAIR OF ANCIENT COIN AND DIAMOND  
EARCLIPS, BULGARI**

Each set with a silver Denarius featuring the helmeted head of Roma, above a baguette diamond base, the bezels respectively inscribed 'Cornelia 172 - 151 a.c.' and 'Renia 135 - 126 a.c.' on the reverse, signed *Bulgari*, with Italian assay and registry marks.

US\$ 4,000-6,000





18

---

**GOLD, ANCIENT COIN AND DIAMOND  
NECKLACE, BULGARI**

Bezel-set with an ancient bronze coin featuring the laureate head of Ares on the front above four baguette diamonds, an eagle on the reverse and inscribed 'Bruttium Brettioi 250 - 220 B.C.' on the reverse, extending to flattened curb link chains, the clasp accented with a round diamond, gross weight approximately 84 dwts, *length 15½ inches, signed Bulgari, numbered 5814, with Italian assay mark.*

US\$ 15,000-20,000



19

---

**GOLD, ANCIENT COIN AND DIAMOND  
NECKLACE, BULGARI**

Bezel-set with an ancient silver coin featuring the head of Caesar, accented with radiating tapered baguette diamonds, the coin reverse inscribed Augustus, the reverse of the bezel inscribed 'C. Augusto 27 a.c. - 14 d.c. - Cistoforo' on a flattened curb link chain, the clasp accented with a round diamond, gross weight approximately 84 dwts, length 14¼ inches, signed Bulgari, with maker's mark.

US\$ 12,000-18,000

**GOLD BRACELET-WATCH, BULGARI**

The textured gold dial applied with black enameled baton indicators, on a coiled gold tubogas bracelet, manual movement, gross weight approximately 104 dwts, *internal circumference adjustable, signed Bulgari, caseback numbered 769901.*

US\$ 12,000-15,000





21

---

**GOLD AND ANCIENT COIN NECKLACE,  
BULGARI**

Featuring an ancient bronze coin depicting the profile of Constantine the Great within an openwork mounting, the reverse inscribed 'Roman Empire Constantinus 306 - 337 A.D.', on a flattened curb link chain, gross weight approximately 58 dwts, length 15½ inches, signed Bulgari, with workshop mark and French import mark.

US\$ 8,000-12,000

22

---

**ANCIENT COIN, AMETHYST AND RUBY BROOCH, BULGARI**

Featuring an ancient coin depicting Hercules in profile, flanked by stacks of pyramidal cabochon amethysts, the ends topped with cabochon rubies, the coin reverse depicting a tripod, the bezel inscribed 'Macedonia-Philippi 4th cent B.C.', signed Bulgari, numbered BD 8996, with Italian assay and registry marks.

US\$ 5,000-7,000



23

---

**GOLD AND ANCIENT COIN PENDANT, BULGARI**

Bezel-set with an ancient bronze coin featuring the profile of Constantine, the reverse depicting Sol, within a polished gold mounting, inscribed 'Roman Empire, Constantine the Great, 306 - 337 A.D.', gross weight approximately 10 dwts, signed Bulgari, Roma, Italy.

US\$ 2,000-3,000



**STEEL, GOLD AND ANCIENT COIN  
CHOKER-NECKLACE, BULGARI**

The steel tubogas band bezel-set with an ancient bronze coin featuring the profile of Constantine the Great, the reverse inscribed 'Roma-Constantinus 306 - 337', with gold stitch-work detail, *internal circumference adjustable, signed Bulgari, with Italian assay and registry marks.*

US\$ 6,000-8,000





25

---

**PAIR OF RUBY, SAPPHIRE AND  
DIAMOND EARCLIPS, BULGARI**

Set with cabochon rubies and sapphires,  
encircled by pavé-set round diamonds, within  
polished gold figure eight frames, *signed Bulgari*.

US\$ 6,000-8,000



26

---

**GOLD AND EMERALD RING, CHAUMET,  
PARIS**

Set with an emerald-cut emerald between two  
step-cut emeralds, within a geometric gold  
mounting, size 5, *signed Chaumet Paris, with  
French assay mark; circa 1940*.

US\$ 15,000-20,000



**DIAMOND RING**

Designed as a three stone ring, centering a round diamond weighing approximately 5.25 carats, flanked by two round diamonds, further accented by smaller round diamonds, *size 8½*.

US\$ 25,000-35,000



PROPERTY FROM A PRIVATE COLLECTION

**ROCK CRYSTAL, ENAMEL AND  
DIAMOND BROOCH, LACLOCHE  
FRÈRES, FRANCE**

Of buckle design, composed of carved rock crystal flanked by palmette motifs set with old European and single-cut diamonds, accented by black enamel, *signed Lacluche Frère, numbered 60, with French assay and partial workshop marks; circa 1925.*

US\$ 20,000-30,000

29

---

PROPERTY FROM A PRIVATE COLLECTION,  
PHILADELPHIA, PENNSYLVANIA

**DIAMOND BRACELET**

Of geometric buckle design, centered on an emerald-cut diamond weighing approximately 2.55 carats, lined with round, baguette and square-cut diamonds, length 6½ inches.

US\$ 15,000-20,000



30

---

**SAPPHIRE AND DIAMOND RING**

Set with a cushion-cut sapphire weighing approximately 4.80 carats, flanked by two baguette diamonds, the shoulders further decorated with single-cut diamonds, size 6½.

*Accompanied by a gemological report.*

US\$ 25,000-35,000



PROPERTY FROM A MID-ATLANTIC  
COLLECTION

**RUBY, EMERALD, SAPPHIRE AND  
DIAMOND RING, BULGARI**

Centered on a cabochon ruby, framed with tiered  
cabochon emeralds and sapphires, accented  
with round diamonds, *size 8, signed Bulgari; circa  
1960. With signed box.*

**LITERATURE**

*Amanda Triossi, Bulgari: 125 Years of Italian  
Magnificence, Milan, 2010, pages 133 and 135 for  
rings of similar style.*

US\$ 12,000-18,000



PROPERTY FROM A MID-ATLANTIC  
COLLECTION

**SAPPHIRE, RUBY, EMERALD AND  
DIAMOND CLIP-BROOCH, BULGARI**

Set with a medley of tiered cabochon sapphires,  
rubies and emeralds, accented with round  
diamonds, *signed Bulgari; circa 1960. With signed  
box.*

**LITERATURE**

*"The bold combination of colours: red, green,  
and blue... was not common in the production of  
the great jewellers of the period. Colour is one of  
the hallmarks of the Bulgari style, one of which  
the maison continues to dedicate incessant  
attention."*

*Amanda Triossi, Bulgari: 125 Years of Italian  
Magnificence, Milan, 2010, pg. 142 for this quote  
and a brooch of similar style.*

US\$ 20,000-30,000

PROPERTY FROM AN ESTATE, FLORIDA AND  
COLORADO

**PLATINUM, GOLD, EMERALD AND  
DIAMOND BRACELET, FRANCE**

Designed as a stylized ribbon of pavé-set round  
diamonds, embellished with round emeralds,  
length 6¾ inches, with French export marks.

US\$ 12,000-15,000



**RUBY AND DIAMOND RING, SHREVE,  
CRUMP & LOW**

Set with a cushion-cut ruby weighing 3.72 carats,  
between bullet-shaped diamond shoulders, size  
6¾, signed Shreve Crump & Low.

Accompanied by Gübelin report no. 19032064  
dated April 1, 2019 stating that the ruby is of  
Burmese origin, with no indications of heating.

Accompanied by AGL report no. 1099072  
dated March 20, 2019 stating that the ruby is of  
Burmese origin, with no indications of heating.

US\$ 30,000-50,000





**PAIR OF RUBY AND DIAMOND  
PENDANT-EARCLIPS, M. GERARD,  
FRANCE**

Suspending detachable pendants centering pear-shaped cabochon rubies, framed by two rows of round diamonds, the surmounts similarly-set with oval-shaped cabochon rubies, framed by round diamonds, *signed M. Gerard, numbered 1178, with French assay and workshop marks.*

US\$ 15,000-20,000



**36**

---

**BAROQUE CULTURED PEARL,  
EMERALD, RUBY, SAPPHIRE AND  
DIAMOND BROOCH**

Designed as a peacock, the torso composed of a cultured baroque pearl, the head and feathers set with round diamonds, accented by round sapphires, rubies and emeralds.

US\$ 5,000-7,000

**TWO CULTURED PEARL AND COLORED  
DIAMOND NECKLACES**

One necklace composed of 28 cultured pearls measuring approximately 15.3 to 13.0 mm, the boule-shaped clasp pavé-set with diamonds of brown hue, *length 16 $\frac{3}{8}$  inches*; the other composed of 32 cultured pearls measuring approximately 15.1 to 12.7 mm, completed by a similarly-set clasp, *length 19 inches*; *the two strands may be worn together as a continuous strand.*

*Please note that the diamonds of brown hue have not been tested for natural origin of color.*

US\$ 6,000-8,000



# PROPERTY FROM AN IMPORTANT ASIAN AMERICAN COLLECTION

LOTS 38-83

The impressive collection that follows blends classic design with frequent glimmers of whimsy. Stately diamond jewels are punctuated by riots of colored stones, projecting a confidence that is strengthened by a healthy dose of levity. Each piece was mindfully and deliberately selected to create a complete jewelry wardrobe: classic pearls for day, constellations of diamonds for night, and jewels by

Cartier, Van Cleef & Arpels and Winston to fill all hours. While an emphasis on quality is evident throughout, for the woman who acquired the jewels- wearing and enjoying them was paramount. The selection offered here is part of a larger collection featuring rare and impressive jewels and gemstones, the remainder of which will be presented in our November sale of Magnificent Jewels in Geneva.



PROPERTY FROM AN IMPORTANT ASIAN  
AMERICAN COLLECTION

**GEM-SET AND DIAMOND SUITE,  
CARTIER, FRANCE**

Comprising: a pendant-necklace suspending a pear-shaped aquamarine weighing approximately 72.70 carats, embellished with a pear-shaped kunzite weighing approximately 5.15 carats, the navette and open pear-shaped links set with round diamonds, further accented by variously-shaped colored stones including pink sapphires, pink tourmalines, peridots, amethysts, tsavorite garnets and round diamonds, *length 20 inches, signed Cartier, numbered 70674B, with French assay and workshop marks*; a ring of similar design, set with a pear-shaped aquamarine weighing approximately 39.00 carats, size 5 $\frac{3}{4}$ , *fitted with a sizing band, signed Cartier, numbered 70651B 50CS, with French assay and workshop marks*; and a pair of earclips set with pear-shaped morganites and green beryls, accented with round diamonds and variously-shaped peridots, citrines, rubies, pink sapphires and amethysts, *signed Cartier, numbered 82225B, with French assay and maker's marks.*

US\$ 70,000-90,000



---

PROPERTY FROM AN IMPORTANT ASIAN  
AMERICAN COLLECTION

**PAIR OF AQUAMARINE AND DIAMOND  
EARCLIPS, TIFFANY & CO.**

Featuring two pear-shaped aquamarines each weighing approximately 12.00 carats, accented by pear and marquise-shaped diamonds, *signed Tiffany & Co.*

US\$ 6,000-8,000



---

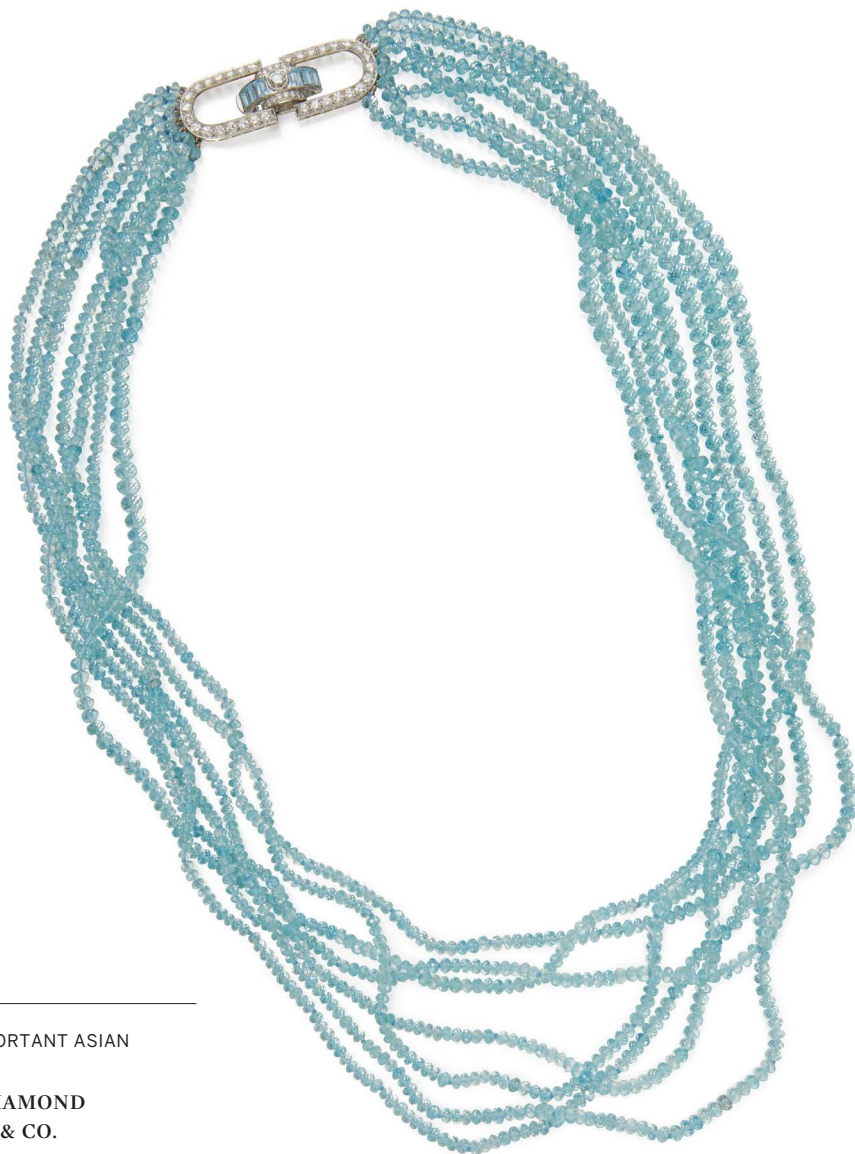
PROPERTY FROM AN IMPORTANT ASIAN  
AMERICAN COLLECTION

**DIAMOND BRACELET**

Of sprung bombé design, the bracelet set with eight rows of round diamonds, *internal circumference 6 inches, expandable.*

US\$ 25,000-35,000





41

---

PROPERTY FROM AN IMPORTANT ASIAN  
AMERICAN COLLECTION

**AQUAMARINE AND DIAMOND  
NECKLACE, TIFFANY & CO.**

Composed of seven strands of faceted  
aquamarine beads, embellished by a geometric  
openwork clasp set with step-cut aquamarines  
and round diamonds, *length 27 inches, signed  
Tiffany & Co., numbered 18515997.*

US\$ 8,000-12,000

PROPERTY FROM AN IMPORTANT ASIAN  
AMERICAN COLLECTION

### JADEITE AND DIAMOND RING

Centering an oval-shaped cabochon jadeite measuring approximately 12.8 x 11.8 x 7.2 mm, surrounded by round and baguette diamonds, size 4¼.

*Accompanied by GIA report no. 6204166258 dated April 3, 2019 stating that the jadeite is Natural Color, with no indications of impregnation.*

US\$ 7,000-9,000



PROPERTY FROM AN IMPORTANT ASIAN  
AMERICAN COLLECTION

### PAIR OF JADEITE AND DIAMOND EARCLIPS

Each set with an oval-shaped cabochon jadeite measuring approximately 13.7 x 7.7 x 6.4 mm and 13.6 x 7.7 x 6.7 mm, surrounded by round and baguette diamonds.

*Accompanied by GIA report no. 6203166172 dated April 4, 2019 stating that the jadeites are Natural Color, with no indications of impregnation.*

US\$ 5,000-7,000



44

---

PROPERTY FROM AN IMPORTANT ASIAN  
AMERICAN COLLECTION

**DIAMOND PENDANT-NECKLACE**

The bezel-set diamond chain suspending an open  
work pendant, set with radiating round diamonds,  
*length 18 to 19¼ inches.*

US\$ 6,000-8,000



45

---

PROPERTY FROM AN IMPORTANT ASIAN  
AMERICAN COLLECTION

**DIAMOND RING**

Designed as crisscrossed rows of round  
diamonds, *size 5.*

US\$ 6,000-8,000



46

---

PROPERTY FROM AN IMPORTANT ASIAN  
AMERICAN COLLECTION

**SAPPHIRE AND DIAMOND RING**

Featuring an oval-shaped cabochon sapphire measuring approximately 20.2 x 13.8 mm, bordered by radiating emerald-cut diamonds, size 4¾, signed T.&C.

US\$ 10,000-15,000



47

---

PROPERTY FROM AN IMPORTANT ASIAN  
AMERICAN COLLECTION

**PAIR OF DIAMOND EARCLIPS**

The square tops suspending lattice-work bottoms, set with numerous round diamonds.

US\$ 8,000-12,000



PROPERTY FROM AN IMPORTANT ASIAN  
AMERICAN COLLECTION

**DIAMOND NECKLACE**

Of lattice design set throughout with round  
diamonds, *length 14¼ inches.*

US\$ 50,000-70,000



---

PROPERTY FROM AN IMPORTANT ASIAN  
AMERICAN COLLECTION

**TWO GOLD CUPS**

Each designed in hand-hammered gold finish, the interior composed of polished gold, total gross weight approximately 259 dwts, *signed Zhi Sheng in Chinese characters.*

US\$ 12,000-15,000





50

---

PROPERTY FROM AN IMPORTANT ASIAN  
AMERICAN COLLECTION

**EMERALD AND DIAMOND RING**

Featuring an oval-shaped cabochon emerald  
weighing approximately 12.00 carats, framed and  
accented by round and pear-shaped diamonds,  
size 4¾.

US\$ 5,000-7,000



51

---

PROPERTY FROM AN IMPORTANT ASIAN  
AMERICAN COLLECTION

**DIAMOND BROOCH**

Of floral design, pavé-set with round diamonds,  
the stem set with a tapered baguette and square-  
cut diamonds.

US\$ 12,000-15,000



PROPERTY FROM AN IMPORTANT ASIAN  
AMERICAN COLLECTION

**TWO DIAMOND NECKLACES**

Each designed as a line of bezel-set round  
diamonds, *length 19½ inches and 17½ inches.*

US\$ 20,000-30,000



53

---

PROPERTY FROM AN IMPORTANT ASIAN  
AMERICAN COLLECTION

**PAIR OF EMERALD AND DIAMOND  
EARCLIPS**

Each designed as an articulated fringe, set  
with oval-shaped diamonds and pear-shaped  
emeralds.

US\$ 5,000-7,000



54

---

PROPERTY FROM AN IMPORTANT ASIAN  
AMERICAN COLLECTION

**DIAMOND 'L'AIR' RING, CHANEL,  
FRANCE**

Centering an oval-shaped diamond weighing 1.58  
carats, surrounded by round diamonds, *signed  
Chanel, Baumer, numbered 13P363, with French  
maker's mark.*

*Accompanied by GIA report no. 2205480339  
dated July 31, 2019 stating that the diamond is F  
color, VVS2 clarity.*

US\$ 8,000-12,000



PROPERTY FROM AN IMPORTANT ASIAN  
AMERICAN COLLECTION

**PAIR OF DIAMOND EARCLIPS, CARTIER,  
FRANCE**

Designed as cascading triangular motifs set  
with round diamonds, *signed Cartier, numbered  
919403, with French assay marks.*

US\$ 25,000-35,000



PROPERTY FROM AN IMPORTANT ASIAN  
AMERICAN COLLECTION

**DIAMOND CUFF-BRACELET**

Pavé-set to the front with round diamonds,  
topped with pavé-set star motifs, gross weight  
approximately 66 dwts, *internal circumference  
6¼ inches, one small diamond missing.*

US\$ 20,000-30,000



57

---

PROPERTY FROM AN IMPORTANT ASIAN  
AMERICAN COLLECTION

**DIAMOND NECKLACE**

Designed as a row of fleurettes set with round  
diamonds, flanked by lines of round diamonds,  
*length 16 inches.*

US\$ 20,000-30,000



58

---

PROPERTY FROM AN IMPORTANT ASIAN  
AMERICAN COLLECTION

**PAIR OF TURQUOISE AND DIAMOND  
'PAISLEY' EARCLIPS, VERDURA**

Each designed as a teardrop, set with oval-shaped cabochon turquoise, accented with round diamonds, *signed Verdura*.

US\$ 5,000-7,000



59

---

PROPERTY FROM AN IMPORTANT ASIAN  
AMERICAN COLLECTION

**TWO GOLD AND DIAMOND BANGLE-  
BRACELETS**

Each designed as stylized bamboo, the hinged gold links decorated with round diamonds, gross weight approximately 78 dwts, *internal circumference 6 inches*.

US\$ 5,000-7,000

60

---

PROPERTY FROM AN IMPORTANT ASIAN  
AMERICAN COLLECTION

**GOLD AND DIAMOND NECKLACE AND  
PAIR OF EARCLIPS, CARTIER, FRANCE**

The necklace featuring intertwined 'C' shaped links set with round diamonds, continued at the sides with a seven row polished gold maillon panthère chain; the earclips of similar design, total gross weight approximately 149 dwts, *necklace length 15½ inches, signed Cartier, necklace numbered 741920, earclips numbered 815775, with French assay and workshop marks. With signed box.*

US\$ 30,000-40,000



60





61



61

---

PROPERTY FROM AN IMPORTANT ASIAN  
AMERICAN COLLECTION

**EMERALD AND DIAMOND NECKLACE**

Composed of three strands of emerald beads measuring approximately 5.1 to 2.4 mm, suspending a cut-corner square buff-top emerald measuring approximately 11.5 x 11.5 mm, framed and accented by round diamonds and calibr -cut emeralds, *length 20 inches*.

US\$ 4,000-6,000

62

---

PROPERTY FROM AN IMPORTANT ASIAN  
AMERICAN COLLECTION

**PAIR OF DIAMOND EARCLIPS**

Of floral design, set throughout with round diamonds.

US\$ 7,000-9,000



63

---

PROPERTY FROM AN IMPORTANT ASIAN  
AMERICAN COLLECTION

**EMERALD AND DIAMOND CLIP-  
BROOCH**

Of floral design, centered on a round diamond encircled by oval-shaped emeralds, the petals pav -set with round diamonds.

US\$ 7,000-9,000





64

---

PROPERTY FROM AN IMPORTANT ASIAN  
AMERICAN COLLECTION

**GOLD, CULTURED PEARL AND  
DIAMOND BROOCH**

Designed as flowers set with two button-shaped cultured pearls measuring approximately 13.9 and 13.4 mm, the petals and leaves further accented by pear and marquise-shaped diamonds, the stems set with baguette diamonds.

US\$ 5,000-7,000



65

---

PROPERTY FROM AN IMPORTANT ASIAN  
AMERICAN COLLECTION

**PAIR OF CULTURED PEARL AND  
DIAMOND EARCLIPS, HARRY WINSTON**

Set with two cultured pearls measuring approximately 13.1 and 13.0 mm, highlighted by marquise-shaped diamonds, *signed Winston*.

US\$ 8,000-12,000

66

---

PROPERTY FROM AN IMPORTANT ASIAN  
AMERICAN COLLECTION

**CULTURED PEARL AND DIAMOND  
NECKLACE, MIKIMOTO**

Composed of three rows of cultured pearls measuring approximately 8.2 to 8.0 mm, on a clasp set with a cultured pearl measuring approximately 7.1 mm, accented with round diamonds, *length 17 inches, with maker's mark, one diamond missing*.

US\$ 3,000-4,000





67

---

PROPERTY FROM AN IMPORTANT ASIAN  
AMERICAN COLLECTION

**DIAMOND NECKLACE AND BRACELET**

Each composed of seven rows of round  
diamonds, total gross weight approximately 157  
dwts, *necklace length 15¼ inches, bracelet length  
7½ inches.*

US\$ 40,000-60,000

PROPERTY FROM AN IMPORTANT ASIAN  
AMERICAN COLLECTION

**LAPIS LAZULI AND DIAMOND CLIP-  
BROOCH AND PAIR OF EARCLIPS,  
FRANCE**

Composed of cascading oval-shaped lapis lazuli  
plaques, accented by round diamonds, *with*  
*French assay and workshop marks.*

US\$ 5,000-7,000



PROPERTY FROM AN IMPORTANT ASIAN  
AMERICAN COLLECTION

**COLORÉD DIAMOND AND DIAMOND  
BANGLE-BRACELET**

The hinged bangle pavé-set with round diamonds  
of yellow, brown, black and near colorless hues in  
a snake-skin pattern, *internal circumference 6¾*  
*inches, one diamond missing.*

*Please note that the colored diamonds have not  
been tested for natural origin of color.*

US\$ 10,000-15,000

PROPERTY FROM AN IMPORTANT ASIAN  
AMERICAN COLLECTION

**DIAMOND NECKLACE**

Designed as a decorative chain set with round  
and tapered baguette diamonds, *length 16 inches.*

US\$ 35,000-45,000



---

PROPERTY FROM AN IMPORTANT ASIAN  
AMERICAN COLLECTION

**PAIR OF EMERALD AND DIAMOND  
PENDANT-EARCLIPS**

Set with four oval-shaped cabochon emeralds,  
framed and accented by pear-shaped and round  
diamonds, further spaced by pear-shaped  
diamonds, *pendants detachable*.

US\$ 12,000-15,000



---

PROPERTY FROM AN IMPORTANT ASIAN  
AMERICAN COLLECTION

**EMERALD, COLORED DIAMOND AND  
DIAMOND BROOCH**

Featuring a sugarloaf cabochon emerald weighing  
approximately 20.00 carats, surrounded by  
petals pavé-set with round diamonds of near  
colorless and yellow hues.

*Please note that the diamonds of yellow hue have  
not been tested for natural origin of color.*

US\$ 7,000-9,000





73

---

PROPERTY FROM AN IMPORTANT ASIAN  
AMERICAN COLLECTION

**PAIR OF DIAMOND EARCLIPS**

Designed as stylized hoops set with round  
diamonds.

US\$ 4,000-6,000

74

---

PROPERTY FROM AN IMPORTANT ASIAN  
AMERICAN COLLECTION

**DIAMOND RING, VAN CLEEF & ARPELS,  
FRANCE**

Designed as a domed band of pavé-set round  
diamonds, bordered by baguette diamonds, size  
5, signed Van Cleef & Arpels, numbered M 40 369,  
with French assay and workshop marks.

US\$ 6,000-8,000



75

---

PROPERTY FROM AN IMPORTANT ASIAN  
AMERICAN COLLECTION

**SAPPHIRE AND DIAMOND NECKLACE,  
CARTIER**

Composed of five strands of graduated sapphire  
beads, interspersed with rondelles set with  
round diamonds, completed by a clasp centering  
a cabochon sapphire within a round diamond  
surround, *internal circumference 17½ inches,*  
*signed Cartier, numbered 890018A.*

US\$ 30,000-50,000





PROPERTY FROM AN IMPORTANT ASIAN  
AMERICAN COLLECTION

**PAIR OF DIAMOND EARCLIPS**

Of stylized door-knocker design, set with round  
diamonds.

US\$ 5,000-7,000



PROPERTY FROM AN IMPORTANT ASIAN  
AMERICAN COLLECTION

**PAIR OF RUBY AND DIAMOND  
EARCLIPS**

Featuring two oval-shaped cabochon rubies  
weighing approximately 19.50 carats, framed with  
two rows of round diamonds.

US\$ 8,000-12,000



PROPERTY FROM AN IMPORTANT ASIAN  
AMERICAN COLLECTION

**SAPPHIRE AND DIAMOND NECKLACE**

Composed of 39 cabochon sapphires, framed  
with round diamonds, extending to lines of  
additional round diamonds, *length 15 inches.*

US\$ 20,000-30,000





79

---

PROPERTY FROM AN IMPORTANT ASIAN  
AMERICAN COLLECTION

**PAIR OF RUBY AND DIAMOND  
EARCLIPS**

Each centering a cluster of cushion-cut and  
oval-shaped rubies, decorated with pear-shaped  
diamonds.

US\$ 20,000-30,000



80

---

PROPERTY FROM AN IMPORTANT ASIAN  
AMERICAN COLLECTION

**DIAMOND CLIP-BROOCH**

Composed of clusters of marquise, baguette and  
round diamonds.

US\$ 5,000-7,000



81

---

PROPERTY FROM AN IMPORTANT ASIAN  
AMERICAN COLLECTION

**CULTURED PEARL AND DIAMOND  
NECKLACE, CARTIER**

Composed of 33 cultured pearls measuring  
approximately 16.0 to 12.5 mm, fitted with a  
ball clasp pavé-set with round diamonds, *signed  
Cartier, numbered 892057.*

US\$ 10,000-15,000

---

PROPERTY FROM AN IMPORTANT ASIAN  
AMERICAN COLLECTION

**DIAMOND BRACELET**

Designed as a wide articulated band of round  
diamonds, *length 6¾ inches.*

US\$ 20,000-30,000



PROPERTY FROM AN IMPORTANT ASIAN  
AMERICAN COLLECTION

**CULTURED PEARL AND DIAMOND  
NECKLACE, CARTIER**

Composed of 33 graduated black cultured pearls  
measuring approximately 17.0 mm to 12.4 mm,  
the ball clasp pavé-set with round diamonds,  
*length 19½ inches, signed Cartier, numbered  
892055.*

US\$ 15,000-20,000



PROPERTY OF A LADY, SARASOTA, FLORIDA

**GOLD AND CORAL LONGCHAIN, VAN  
CLEEF & ARPELS, FRANCE**

Composed of textured gold links, spaced by  
round coral links, *length 32 inches, signed VCA,*  
*with French export mark.* With signed pouch.

*Please note this property cannot be shipped  
internationally due to endangered species  
materials.*

© US\$ 10,000-15,000





---

**PAIR OF CULTURED PEARL, QUARTZ  
AND DIAMOND 'G-ONE' EARCLIPS,  
GOSHWARA**

Designed as tassels with graduated strands of milky quartz, capped by round diamonds, surmounted by two cultured pearls of gray hue measuring approximately 10.0 mm, each inset with a round diamond, *signed Goshwara*. Fitted with posts.

US\$ 4,000-6,000



---

**GOLD AND LAPIS LAZULI BRACELET,  
ALETTO BROTHERS**

Composed of a line of bezel-set faceted triangular lapis lazuli segments, *length 7 inches*, *signed Aletto Bros.* With signed pouch.

US\$ 14,000-16,000



PROPERTY FROM  
THE COLLECTION OF  
DANIELLE STEEL

LOTS 87-89



Danielle Steel  
© BRIGITTE LACOMBE



87

PROPERTY FROM THE COLLECTION OF  
DANIELLE STEEL

**GOLD, SAPPHIRE AND DIAMOND  
'CAPVT MVNDI' PENDANT-  
NECKLACE, LIV BALLARD**

Designed as a rotating globe pavé-set with  
round sapphires, the continents composed

of matte gold, the equator delineated in round  
diamonds, suspended from a frame set with  
round diamonds topped with a fleur-de-lys,  
suspended from a hammered yellow gold chain,  
*length 29 inches, unsigned.*

US\$ 8,000-12,000

PROPERTY FROM THE COLLECTION OF  
DANIELLE STEEL

**GOLD AND ZIRCON CLIP-BROOCH AND  
PAIR OF GEM-SET EARCLIPS, VERDURA,  
FRANCE**

The clip-brooch designed as an oak leaf, set with variously-cut multi-colored zircons, *signed Verdura, France*; the earclips designed as maple leaves, set with oval, round and pear-shaped zircons, quartz and tourmalines, *signed Verdura, with French assay and maker's marks.*

**LITERATURE**

*For images of similar leaf jewels, see Verdura: The Life and Work of a Master Jeweler by Patricia Corbett, pages 93 and 124.*

US\$ 30,000-40,000



PROPERTY FROM THE COLLECTION OF  
DANIELLE STEEL

**PAIR OF ZIRCON EARCLIPS, HERZ-  
BELPERRON, FRANCE**

Each designed as a stylized cornucopia of oval-shaped zircons of various hues, *signed Herz Belperron, France, with French assay and maker's marks.*

US\$ 6,000-8,000

**FANCY INTENSE YELLOW DIAMOND  
AND DIAMOND RING, TIFFANY & CO.**

Centering a Fancy Intense Yellow square antique modified brilliant-cut diamond weighing 3.08 carats, accented by square-cut diamonds, size 6, signed *Tiffany & Co.*, numbered 29904707.

*Accompanied by Tiffany & Co. Diamond Certificate no. 29904707/N02230326 stating that the diamond is Fancy Intense Yellow, VS1 clarity, with Excellent Cut and Polish.*

US\$ 20,000-30,000



PROPERTY FROM A PRIVATE COLLECTION,  
PHILADELPHIA, PENNSYLVANIA

**PAIR OF EMERALD AND DIAMOND  
EARCLIPS**

Set with two pear-shaped emeralds weighing approximately 2.00 carats and 1.75 carats, framed with round diamonds, accented with lines of baguette diamonds. Fitted with posts.

US\$ 5,000-7,000

92

---

**PAIR OF DIAMOND EARCLIPS**

Designed as clusters, set with marquise and pear-shaped diamonds weighing from 1.13 to 0.90 carats.

*Accompanied by 14 GIA reports and Dossiers dated from September 24, 2015 to October 9, 2017 stating that the diamonds weighing from 1.13 to 0.90 carats are D to G color, VS1 to SI2 clarity.*

US\$ 45,000-55,000



93

---

PROPERTY FROM A PRIVATE COLLECTION,  
PHILADELPHIA, PENNSYLVANIA

**EMERALD AND DIAMOND RING**

Set with an emerald-cut emerald weighing 8.85 carats, between triangle-shaped diamonds, size 5¾.

*Accompanied by AGL report no. 1101440 dated June 7, 2019 stating that the emerald is of Colombian origin, clarity enhancement: minor, type: traditional.*

US\$ 12,000-15,000



PROPERTY FROM A FLORIDA PRIVATE  
COLLECTION

### RUBY AND DIAMOND BRACELET

Of buckle design, set with round and baguette diamonds, alternating with links set with calibrated rubies, length 7 $\frac{1}{8}$  inches, numbered 1640; circa 1930.

#### LITERATURE

*A similar bracelet, attributed to William Scheer Inc., is illustrated in American Jewelry: Glamour and Tradition, by Penny Proddow and Debra Healy, page 120, fig. 93.*

US\$ 15,000-20,000



### RUBY AND DIAMOND RING

Set with an oval-shaped ruby weighing 2.86 carats, within a cluster of round diamonds on a diamond-set split shank, size 6.

*Accompanied by AGL report no. 1087927 dated October 24, 2017 stating that the Ruby is of Burmese origin, with no indications of heating.*

US\$ 25,000-35,000



---

**PAIR OF RUBELLITE AND DIAMOND EARRINGS**

Set with a pair of oval-shaped rubellites surrounded by graduating tiers of round diamonds, *with Russian hallmarks.*

US\$ 2,500-3,500



---

PROPERTY FROM A PRIVATE COLLECTION,  
PENNSYLVANIA

**SAPPHIRE AND DIAMOND RING**

Set with a cushion-cut sapphire weighing 13.90 carats, bordered and accented by round diamonds, *size 7, one small diamond missing.*

*Accompanied by two AGL reports:*

*No. 1093322 dated June 28, 2018 stating that the sapphire is of Burmese origin, with no indications of heating.*

*No. CS61790 dated June 30, 2014 stating that the sapphire is of Burmese origin, with no indications of heating.*

US\$ 80,000-120,000





98



98

---

PROPERTY OF A PRIVATE COLLECTOR, LONG ISLAND

**SUITE OF RUBY AND DIAMOND JEWELS, TIFFANY & CO.**

Comprising: a necklace set with alternating trios of slightly graduated round diamonds and rubies, length 16 inches, unsigned, clasp later modified; a 'Polka Dot' ring of domed design pavé-set with round rubies and diamonds, size 6½, signed Tiffany & Co., and a similarly-set pair of 'Polka Dot' earclips, signed T&Co., fitted with posts. With three signed boxes and three signed pouches.

Accompanied by photocopy of Retail Replacement Valuation from Tiffany & Co.

US\$ 15,000-20,000



99

---

**GOLD AND DIAMOND CUFF-BRACELET, BUCCELLATI**

The brushed gold cuff featuring openwork snowflake motifs adorned with round diamonds, gross weight approximately 54 dwts, internal circumference 6¾ inches, signed M.Buccellati Italy, with Italian registry mark. With signed box.

US\$ 40,000-60,000

100

---

PROPERTY OF A LADY, MIAMI, FLORIDA

**DIAMOND RING**

Centering a round diamond weighing 3.77 carats, encircled by alternating pairs of round and baguette diamonds, size 7.

Accompanied by GIA report no. 5202035284 dated February 4, 2019 stating that the diamond is K color, VVS2 clarity.

US\$ 18,000-22,000



PROPERTY OF A LADY, SARASOTA, FLORIDA

**DIAMOND AND ENAMEL BANGLE-  
BRACELET**

Centering a marquise-shaped diamond weighing 6.17 carats, applied throughout with black enamel, *internal circumference 6½ inches.*

*Accompanied by GIA report no. 5201388799 dated June 20, 2019 stating that the diamond is E color, VVS1 clarity.*

US\$ 125,000-175,000



**GOLD AND DIAMOND CLIP-BROOCH,  
TIFFANY & CO.**

Composed of a sheaf of gold fronds, some adorned with round diamonds, gathered together with baguette and square-cut diamonds, *signed Tiffany & Co., numbered 60993807.*

US\$ 7,000-9,000



PROPERTY FROM A PRIVATE COLLECTION

**EMERALD AND DIAMOND RING**

Set with an emerald-cut emerald weighing 11.61 carats, flanked by half moon-shaped diamonds, size 6¼.

*Accompanied by AGL report no. CS 64498 dated November 17, 2014 stating that the emerald is of Colombian origin, clarity enhancement: minor; type: modern with in-filling.*

*Accompanied by GIA report no. 216569075 dated October 3, 2014 stating that the emerald is of Colombian origin, clarity enhancement: moderate.*

US\$ 20,000-30,000



**DIAMOND RING**

Set with a cut-cornered rectangular step-cut diamond weighing 25.07 carats, size 6¼.

*Accompanied by GIA report no. 2195464775 dated March 28, 2019 stating that the diamond is K color, VS1 clarity, with Excellent Polish and Symmetry.*

US\$ 425,000-475,000





105

---

PROPERTY FROM A PRIVATE COLLECTION,  
DALLAS, TEXAS

**TURQUOISE AND DIAMOND BRACELET**

Composed of two lines of oval turquoise cabochons, joined by round and baguette diamond-set links, *length 7¼ inches, one diamond missing.*

US\$ 12,000-15,000



106

---

**STAINLESS STEEL, DIAMOND AND  
TOURMALINE 'TUBOGAS' BRACELET-  
WATCH, BULGARI**

Of sprung design, terminating in a dial featuring roman numeral and baton indicators, partially framed by round diamonds, the crown set with a cabochon pink tourmaline, *internal circumference expandable, signed Bulgari, numbered SP 35 S and L 1190.*

*Accompanied by Certificate of Authenticity from Bulgari.*

US\$ 6,000-8,000





107

---

PROPERTY OF A PRIVATE COLLECTOR

**AQUAMARINE AND SAPPHIRE RING,  
VAN CLEEF & ARPELS**

Set with an elongated rectangular aquamarine weighing approximately 22.00 carats, between French-cut sapphire shoulders, size 7, signed Van Cleef & Arpels, numbered N.Y. 5080.

US\$ 8,000-12,000

108

---

PROPERTY FROM A COLLECTION

**SYNTHETIC SAPPHIRE AND DIAMOND  
BRACELET, FRANCE**

Set with calibr -cut synthetic sapphires, old European and single-cut diamonds in a geometric pattern, length 7 inches, one synthetic sapphire missing, with French assay and workshop marks.

US\$ 10,000-15,000



# All Things Beautiful

PROPERTY FROM  
AN AMERICAN  
PRIVATE COLLECTION

LOTS 109–134

Sotheby's is honored to present bold, sophisticated and timeless jewelry and fine art from an American Private Collection. A keen appreciation of quality and beauty is reflected in this collection of splendid jewels, which includes classics from David Webb, Tiffany & Co., and Buccellati. This selection encompasses all the essentials of sophistication: striking gold collars, statement earclips, classic pearls and most notably, a fine selection of diamonds. Altogether, these pieces are always appropriate and could be worn from the board room to the symphony.

The lots offered here are part of a larger collection featuring rare and impressive jewels and gemstones, the remainder of which will be presented in our December 10th sale of Magnificent Jewels in New York. In addition to these jewels, the collection is made up of fine art works by David Hockney, Alex Katz, Joan Miró, Milton Avery, and William De Kooning, among others, which will be offered throughout Sotheby's Contemporary, Impressionist and Modern and American Art sales this fall.



110





109

109

---

ALL THINGS BEAUTIFUL: PROPERTY FROM AN AMERICAN PRIVATE COLLECTION

**GOLD AND DIAMOND 'VANNERIE' NECKLACE, TIFFANY & CO.**

Designed as a band of basketwoven gold, accented by bands of round pavé-set diamonds, gross weight approximately 124 dwts, length 14¾ inches, signed Tiffany & Co., with Swiss hallmark.

US\$ 10,000-15,000

110

---

ALL THINGS BEAUTIFUL: PROPERTY FROM AN AMERICAN PRIVATE COLLECTION

**GOLD AND DIAMOND 'VANNERIE' CUFF-BRACELET, TIFFANY & CO.**

Of sprung design, composed of basketwoven gold, accented by bands of round diamonds, gross weight approximately 66 dwts, internal circumference 6½ inches, signed Tiffany & Co.

US\$ 5,000-7,000



ALL THINGS BEAUTIFUL: PROPERTY FROM AN AMERICAN PRIVATE COLLECTION

**PAIR OF GOLD AND DIAMOND  
EARCLIPS, DAVID WEBB**

Composed of interlocking lozenge-shaped gold links, adorned with round diamonds, gross weight approximately 34 dwts, *signed David Webb*.

US\$ 12,000-18,000



ALL THINGS BEAUTIFUL: PROPERTY FROM AN AMERICAN PRIVATE COLLECTION

**GOLD 'ELIOCHRON' WRISTWATCH,  
BUCCELLATI**

The white circular dial featuring a gold bezel with Arabic numeral indicators, the gold bracelet overlaid with a black leather band, quartz movement, gross weight approximately 102 dwts, *internal circumference 6 $\frac{7}{8}$  inches, caseback signed Buccellati, clasp signed Gianmaria Buccellati, numbered 0012 and 67/100, with Swiss hallmarks.*

*Please note this property cannot be shipped internationally due to endangered species materials.*

US\$ 4,000-6,000

ALL THINGS BEAUTIFUL: PROPERTY FROM AN  
AMERICAN PRIVATE COLLECTION

**GOLD NECKLACE, DAVID WEBB**

Composed of three hammered gold plaques  
and polished scroll-shaped links, gross weight  
approximately 94 dwts, *internal circumference*  
*14<sup>3</sup>/<sub>4</sub> inches, signed Webb.*

US\$ 8,000-12,000



ALL THINGS BEAUTIFUL: PROPERTY FROM AN  
AMERICAN PRIVATE COLLECTION

**PERIDOT, CITRINE, RUBY AND  
DIAMOND NECKLACE, SABBADINI**

Composed of three strands of tumbled peridot beads spaced at intervals with ruby beads, faceted citrine beads and gold rondelles set with round diamonds, joined with a clasp set with a carved citrine cabochon, *length 17 inches, signed Sabbadini, with Italian registry marks.*

US\$ 6,000-8,000



ALL THINGS BEAUTIFUL: PROPERTY FROM AN  
AMERICAN PRIVATE COLLECTION

**KUNZITE, SPODUMENE AND  
CULTURED PEARL NECKLACE,  
CHRISTOPHER WALLING**

Composed of two strands of tumbled kunzite and  
green and colorless spodumene crystal beads,  
spaced by freshwater cultured pearls, *internal  
circumference 17¾ inches, signed C.W.*

US\$ 2,500-3,500





116

---

ALL THINGS BEAUTIFUL: PROPERTY FROM AN AMERICAN PRIVATE COLLECTION

**GOLD 'ALVEARE' NECKLACE, BULGARI**

Composed of polished gold modular links, gross weight approximately 152 dwts, *internal circumference 15 inches, signed Bulgari, numbered BA7819, with Italian registry marks.*

US\$ 6,000-8,000



117

---

ALL THINGS BEAUTIFUL: PROPERTY FROM AN AMERICAN PRIVATE COLLECTION

**PAIR OF CULTURED PEARL AND DIAMOND EARCLIPS**

Centered on two button-shaped cultured pearls measuring approximately 14.2 x 14.1 mm and 14.2 x 13.9 mm, encircled by three rows of pavé-set round diamonds, *fitted with pendant hooks.*

US\$ 5,000-7,000

ALL THINGS BEAUTIFUL: PROPERTY FROM AN  
AMERICAN PRIVATE COLLECTION

**GOLD AND DIAMOND NECKLACE**

Composed of polished gold links, the front  
accented with round diamonds, gross weight  
approximately 103 dwts, *length 16 inches.*

US\$ 7,000-9,000



ALL THINGS BEAUTIFUL: PROPERTY FROM AN  
AMERICAN PRIVATE COLLECTION

**SUITE OF ONYX AND DIAMOND  
JEWELS**

Comprising: a necklace designed as a tapered braid pavé-set with round diamonds and accented with onyx segments, *internal circumference 16¾ inches*; a similarly-designed bracelet, *length 7½ inches*; a pair of matching earclips, *fitted with retractable posts*; and a ring *en suite*, *size 8½*; necklace and earclips with *Italian registry marks*.

US\$ 35,000-55,000





120

---

ALL THINGS BEAUTIFUL: PROPERTY FROM AN AMERICAN PRIVATE COLLECTION

**PERIDOT AND DIAMOND RING**

Centering an octagonal-cut peridot weighing approximately 36.00 carats, framed and accented by round diamonds, *size 7*.

US\$ 5,000-7,000



121

---

ALL THINGS BEAUTIFUL: PROPERTY FROM AN AMERICAN PRIVATE COLLECTION

**PAIR OF ONYX AND DIAMOND  
'CAMELLIA' EARCLIPS, CHANEL,  
FRANCE**

Designed as flowers, set with round diamonds, the petals accented with onyx cabochons, *signed Chanel, numbered 7C74, with French assay and workshop marks.*

US\$ 10,000-15,000





122

---

ALL THINGS BEAUTIFUL: PROPERTY FROM AN AMERICAN PRIVATE COLLECTION

**GOLD NECKLACE AND PAIR OF EARCLIPS**

A necklace composed of spherical gold beads with a concentric circle pattern, completed by an X-shaped clasp, and a matching pair of earclips, total gross weight approximately 196 dwts, necklace length 17 inches, earclips signed C.W. for Christopher Walling.

US\$ 10,000-15,000

ALL THINGS BEAUTIFUL: PROPERTY FROM AN AMERICAN PRIVATE COLLECTION

**GROUP OF THREE GOLD AND GEM-SET BROOCHES, TWO BY ELIZABETH LOCKE**

Comprising: a pendant-brooch centering an orange glass cameo depicting Medusa, backed with mother-of-pearl, framed by pyramidal cabochon citrines, suspending a citrine briolette, *with maker's mark for Elizabeth Locke*; a clip-brooch featuring a mother-of-pearl plaque engraved with a Japonesque scene, accented by cultured pearls measuring from approximately 8.1 to 6.6 mm, *with maker's mark for Elizabeth Locke*; and a hammered gold bar brooch accented by green chalcedony cabochons, supporting a gold chain suspending a cultured pearl measuring approximately 10.6 mm, and a glass cameo depicting a female profile, accented by a cabochon ruby, *unsigned*.

*Please note this property cannot be shipped internationally due to endangered species materials.*

• US\$ 3,000-5,000



ALL THINGS BEAUTIFUL: PROPERTY FROM AN  
AMERICAN PRIVATE COLLECTION

**THREE-COLOR GOLD CLIP-BROOCH  
AND PAIR OF EARCLIPS, BUCCELLATI**

Of floral design, composed of textured white  
gold petals, with sculpted pink and yellow gold  
centers, *each signed Buccellati Italy, clip-brooch  
numbered H4274, earclips numbered H6141, with  
Italian registry marks.* Fitted with posts.

US\$ 3,000-5,000





125

---

ALL THINGS BEAUTIFUL: PROPERTY FROM AN AMERICAN PRIVATE COLLECTION

**GOLD COLLAR-NECKLACE**

Composed of hammered gold embellished with Greek key motifs, gross weight approximately 60 dwts, *internal circumference 15 inches.*

US\$ 3,000-5,000

126

---

ALL THINGS BEAUTIFUL: PROPERTY FROM AN AMERICAN PRIVATE COLLECTION

**TWO-COLOR GOLD 'AGALMACHRON' WRISTWATCH, BUCCELLATI**

Featuring a square dial with Roman numeral indicators, centering a gold floral motif, the textured white gold bracelet with a damask pattern, quartz movement, gross weight approximately 97 dwts, *internal circumference 6 $\frac{7}{8}$  inches, caseback signed Gianmaria Buccellati, clasp signed Buccellati, with Swiss hallmarks.*



US\$ 4,000-6,000

ALL THINGS BEAUTIFUL: PROPERTY FROM AN AMERICAN PRIVATE COLLECTION

**GOLD AND MOTHER-OF-PEARL 'MAGIC ALHAMBRA' NECKLACE AND PAIR OF EARCLIPS, VAN CLEEF & ARPELS**

The necklace composed of 10 variously-sized mother-of-pearl quatrefoil-shaped motifs joined with a gold chain, length 34¼ inches, signed VCA, numbered JE467546, with French assay and workshop marks; the earclips of similar design, signed VCA, numbered JE976004, with French assay and workshop marks.

*Please note this property cannot be shipped internationally due to endangered species materials.*

© US\$ 12,000-18,000



ALL THINGS BEAUTIFUL: PROPERTY FROM AN AMERICAN PRIVATE COLLECTION

**TWO-COLOR GOLD AND DIAMOND NECKLACE, BUCCELLATI**

Composed of domed gold plaques with brushed finish, overlaid with central white gold star-motif accents set to the front with round diamonds, gross weight approximately 54 dwts, *internal circumference 16 inches, signed Buccellati, Italy, numbered N6062, with Italian assay and registry marks.*

US\$ 5,000-7,000



ALL THINGS BEAUTIFUL: PROPERTY FROM AN AMERICAN PRIVATE COLLECTION

**PAIR OF TWO-COLOR GOLD AND DIAMOND EARCLIPS, BUCCELLATI**

Of domed design, the star motifs each centering a round diamond, *signed Buccellati, Italy, numbered N5849. Fitted with posts.*

US\$ 1,500-2,500

ALL THINGS BEAUTIFUL: PROPERTY FROM AN AMERICAN PRIVATE COLLECTION

**PAIR OF CULTURED PEARL AND DIAMOND EARCLIPS**

Centering two cultured pearls measuring approximately 15.2 x 15.2 x 13.0 and 15.1 x 15.1 x 13.3 mm, framed by round diamonds.

US\$ 8,000-12,000



ALL THINGS BEAUTIFUL: PROPERTY FROM AN AMERICAN PRIVATE COLLECTION

**DIAMOND CLIP-BROOCH**

Designed as a cascading cluster of marquise and pear-shaped diamonds, embellished with ribbons of baguette and tapered baguette diamonds, *numbered 2578.*

US\$ 30,000-40,000



132

---

ALL THINGS BEAUTIFUL: PROPERTY FROM AN  
AMERICAN PRIVATE COLLECTION

**PAIR OF CULTURED PEARL AND  
DIAMOND EARCLIPS**

Set with two cultured pearls measuring  
approximately 18.1 to 17.9 mm, accented by two  
triangle-shaped diamonds.

US\$ 6,000-8,000



133

---

ALL THINGS BEAUTIFUL: PROPERTY FROM AN  
AMERICAN PRIVATE COLLECTION

**DIAMOND RING**

Designed as a graduated band of 27 vertically-set  
baguette diamonds, size 7½.

US\$ 20,000-30,000



ALL THINGS BEAUTIFUL: PROPERTY FROM AN  
AMERICAN PRIVATE COLLECTION

**PAIR OF GOLD AND GEM-SET  
EARCLIPS, BULGARI, AND PAIR OF  
GOLD EARCLIPS**

A pair of earclips featuring a floral motif set with blue topaz, citrine, and green and pink tourmaline cabochons, *signed Bulgari, with Italian registry marks*; and another pair designed as spirals of textured gold, *unsigned, fitted with posts*.

US\$ 2,500-3,500



---

**GOLD, CORAL, ONYX AND DIAMOND  
LONGCHAIN, BULGARI**

Composed of circular gold links, some set with coral and round diamonds, and some with onyx and similarly-cut diamonds, gross weight approximately 80 dwts, length 39 inches, signed Bulgari, Italy.

*Please note this property cannot be shipped internationally due to endangered species materials.*

• US\$ 35,000-45,000



PROPERTY OF A DISTINGUISHED COLLECTOR

**CORAL, DIAMOND AND ENAMEL  
'BASTILLE' RING, DAVID WEBB**

Set to the front with three coral sugarloaf cabochons, highlighted with round diamonds, within a black enameled surround, size 7½, signed Webb.

*Please note this property cannot be shipped internationally due to endangered species materials.*

**LITERATURE**

*For a similar example, see David Webb The Quintessential American Jeweler by Ruth Peltason, page 81.*

• US\$ 12,000-15,000



PROPERTY OF A LADY, NEW YORK, NEW YORK

**PAIR OF DIAMOND EARCLIPS,  
DAVID WEBB**

Of door knocker design, set throughout with round diamonds, signed Webb. With signed pouch.

US\$ 25,000-35,000





**GOLD, GEM-SET AND DIAMOND  
'CELTICA' CUFF-BRACELET, BULGARI**

The front set with amethyst, pink tourmaline, blue topaz and citrine cabochons, accented by pavé-set round diamonds, on a sprung tapered gold band, gross weight approximately 90 dwts, *internal circumference 6 inches, signed Bulgari, with Italian assay and registry marks.*

US\$ 20,000-30,000

□ 139 SOLD WITHOUT RESERVE

**GOLD AND FANCY VIVID YELLOW  
DIAMOND RING**

Horizontally-set with a Fancy Vivid Yellow emerald-cut diamond weighing 2.11 carats, in a textured matte gold mounting, size 6.

*Accompanied by GIA report no. 1132081987 dated February 18, 2011 stating that the diamond is Fancy Vivid Yellow, Natural Color, VS1 clarity.*

US\$ 20,000-30,000



PROPERTY OF A LADY, NEW YORK, NEW YORK

**CULTURED PEARL AND DIAMOND  
CUFF-BRACELET, DAVID WEBB**

The overlapping terminals each set with a baroque cultured pearl, on a tapered band set with graduating round diamonds, the back composed of flexible gold links, *internal circumference 5½ inches, signed Webb*. With signed pouch.

US\$ 20,000-30,000



**DIAMOND RING, HAMMERMAN  
BROTHERS**

Of flexible design, composed of five rows of round diamonds, *size 6½, with maker's mark for Hammerman Brothers*.

US\$ 5,000-7,000



PROPERTY OF A PRIVATE COLLECTOR

**EMERALD AND DIAMOND CLASP  
WITH PAIR OF INTERCHANGEABLE  
CULTURED PEARL AND GOLD BEAD  
BRACELETS, DAVID WEBB**

The clasp designed as a lion, pavé-set with round diamonds, accented with round and pear-shaped emeralds, wearable on interchangeable torsade bracelets, one composed of 10 rows of cultured pearls measuring approximately 4.9 to 4.3 mm, the other composed of fluted gold beads, *length 5½ inches each, signed David Webb; circa 1965.*

US\$ 25,000-35,000



□ **143** SOLD WITHOUT RESERVE

**GOLD, EMERALD AND DIAMOND RING**

Set with an emerald-cut emerald weighing 2.58 carats, flanked by graduated baguette diamonds, *size 7.*

US\$ 10,000-15,000



PROPERTY FROM A PRIVATE COLLECTION,  
DALLAS, TEXAS

**PAIR OF FANCY YELLOW DIAMOND  
AND DIAMOND EARCLIPS**

Centering Fancy Yellow heart-shaped diamonds weighing 4.80 and 4.13 carats, framed by near colorless round diamonds.

*Accompanied by two GIA reports:*

*No. 5202490789 dated August 5, 2019 stating that the diamond weighing 4.80 carats is Fancy Yellow, Natural Color, VS2 clarity.*

*No. 6204490782 dated August 5, 2019 stating that the diamond weighing 4.13 carats is Fancy Yellow, Natural Color, VS1 clarity. Together with the original working diagram stating that the diamond may be potentially Internally Flawless.*

US\$ 50,000-70,000



PROPERTY FROM AN EAST COAST COLLECTION

**FANCY YELLOW DIAMOND AND  
DIAMOND RING**

Centering a cut-cornered rectangular modified brilliant-cut Fancy Yellow diamond weighing 4.09 carats, flanked by two half moon-shaped diamonds, size 7, with maker's mark.

*Accompanied by GIA report no. 6207453265 dated July 17, 2019 stating that the diamond is Fancy Yellow, Natural Color, VVS2 clarity. Together with the original working diagram stating that the diamond may be potentially Internally Flawless.*

US\$ 18,000-22,000



---

PROPERTY FROM A PRIVATE COLLECTION

**DIAMOND, ONYX, EMERALD AND  
ENAMEL BROOCH, VAN CLEEF &  
ARPELS, FRANCE**

Designed as a panther posed on a branch, pavé-set with round diamonds and faceted onyx, with round emerald eyes and a black enamel nose, *signed Van Cleef & Arpels, numbered M34445, with French assay and workshop marks.*

US\$ 15,000-20,000



---

**PAIR OF ENAMEL AND DIAMOND  
EARCLIPS, DAVID WEBB**

Designed as a pair of stylized buckles applied with black enamel, the domed centers pavé-set with round diamonds, *signed Webb.*

US\$ 6,000-8,000



PROPERTY FROM A PRIVATE COLLECTION,  
PENNSYLVANIA

### DIAMOND RING

Set with an emerald-cut diamond weighing 5.00 carats, flanked by two half-moon-shaped diamonds weighing 1.06 and 1.04 carats, size 7.

*Accompanied by three GIA reports:*

*No. 2165247824 dated June 12, 2014 stating that the diamond weighing 5.00 carats is F color, VVS1 clarity.*

*No. 15690697 dated February 28, 2007 stating that the diamond weighing 1.06 carats is F color, VS2 clarity.*

*No. 15700141 dated February 28, 2007 stating that the diamond weighing 1.04 carats is G color, Internally Flawless.*

US\$ 120,000-180,000





149

---

**EMERALD AND DIAMOND PENDANT-  
NECKLACE**

Supporting a pendant-brooch centering an emerald-cut emerald weighing approximately 8.90 carats, framed and accented by old European, baguette and tapered baguette diamonds, suspended from a necklace composed of clusters of round and marquise-shaped diamonds, *length 16¼ inches.*

US\$ 40,000-60,000



150

---

**FANCY YELLOW DIAMOND AND  
DIAMOND NECKLACE**

Suspending a modified shield step-cut Fancy Yellow diamond weighing 10.20 carats, framed by round diamonds, topped by three pear-shaped diamonds, the chain set at intervals with round diamonds, *length 18 inches*.

*Accompanied by GIA report no. 11693125 dated October 24, 2017 stating that the diamond is Fancy Yellow, Natural Color, VVS2 clarity.*

US\$ 75,000-100,000

151

---

PROPERTY OF A PRIVATE COLLECTOR,  
VIRGINIA

**FANCY DEEP BROWNISH YELLOW  
DIAMOND AND DIAMOND RING**

Set with a cut-cornered rectangular modified brilliant-cut diamond weighing 5.01 carats, flanked by two triangle-shaped diamonds, size 6.

*Accompanied by GIA report no. 6204288700 dated May 10, 2019 stating that the diamond is Fancy Deep Brownish Yellow, Natural Color, VVS2 clarity.*

US\$ 15,000-20,000



152 No Lot

153

---

**DIAMOND 'NOVO' RING, TIFFANY & CO.**

Centering a cushion-cut diamond weighing 5.26 carats, accented by round diamonds, size 6, signed *Tiffany & Co.*, numbered 23341816.

*Accompanied by Tiffany & Co. Diamond Certificate no. 23341816/107160433 stating that the diamond is G color, VVS1 clarity, with Excellent Cut, Polish and Symmetry.*

US\$ 90,000-120,000



PROPERTY FROM A NEW YORK COLLECTION

**TWO-COLOR GOLD AND RHODONITE CUFF-BRACELET, BUCCELLATI**

The hinged cuff-bracelet set with three oval rhodonite cabochons, embellished with decorative white and yellow gold metalwork, gross weight approximately 42 dwts, *internal circumference 7 inches, signed Mario Buccellati.* With signed pouch.

US\$ 12,000-15,000



□ 155 SOLD WITHOUT RESERVE

**THREE GOLD AND DIAMOND RINGS, VAN CLEEF & ARPELS, FRANCE**

One ring pavé-set with single-cut diamonds set within a textured gold band, *size 4¾, signed VCA, numbered 81 C5001 A18, with French export and workshop marks*; one ring similarly-set with round diamonds, accented by segments of polished white gold, *size 3½, signed VCA, numbered 76 85001 D 143, with French assay and workshop marks*; and another similarly-set with round diamonds, flanked by segments of amethyst, *size 4½, signed Van Cleef & Arpels, numbered C 5001 M6, with French workshop and assay marks.*

US\$ 5,000-7,000



156

---

**PAIR OF OPAL AND DIAMOND 'G-ONE'  
EARRINGS, GOSHWARA**

Set with four variously-shaped opals, framed and accented by round diamonds, *signed Goshwara*.

US\$ 18,000-22,000



157

---

**STAR SAPPHIRE AND DIAMOND RING,  
TIFFANY & CO.**

Centered on a star sapphire weighing approximately 22.00 carats, framed by round diamonds, on a shank composed of articulated links set with round diamonds, size 5¼, *signed Tiffany*.

*Accompanied by AGL report no. CS 58052 dated November 18, 2013 stating that the star sapphire is of Ceylon origin, with no indications of heating.*

US\$ 25,000-35,000



158

---



PROPERTY FROM A PRIVATE CONNECTICUT COLLECTION

**DIAMOND CLIP-BROOCH, MOUNTED BY MAUBOUSSIN, FRANCE**

Of swirled foliate design, set throughout with old European, old mine and Swiss-cut diamonds, signed *Mre Mauboussin*, numbered *02242*, with *French assay and workshop marks*; circa 1950.

US\$ 15,000-20,000

159

---



PROPERTY FROM A PRIVATE CONNECTICUT COLLECTION

**DIAMOND BRACELET, MOUNTED BY MAUBOUSSIN, FRANCE**

Designed as tapered flowing lines of old European, old mine and single-cut diamonds, signed *Mre Mauboussin*, numbered *02681*, with *French assay and workshop marks*; circa 1950. With signed box.

US\$ 25,000-35,000



PROPERTY OF A LADY

### SAPPHIRE AND DIAMOND RING

Centering a cushion-cut sapphire weighing 2.91 carats, flanked by two old mine-cut diamonds weighing 1.06 and 1.03 carats, size 6½.

*Accompanied by AGL report no. 1102108 dated July 8, 2019 stating that the sapphire is of Kashmir origin, with no indications of heating.*

US\$ 40,000-60,000



### PAIR OF CULTURED PEARL AND DIAMOND PENDANT-EARCLIPS

The surmounts centering two cultured pearls measuring approximately 10.0 mm, framed by baguette and round diamonds, suspending cultured pearl drops measuring approximately 12.6 mm by 11.1 mm, capped and encircled by round and pear-shaped diamonds, *unsigned, pendants later added.*

*Accompanied by GIA report no. 2205188935 dated April 22, 2019 stating that the pearls are cultured, with no indications of treatment.*

*Accompanied by a Letter of Authenticity from Harry Winston stating that the surmounts were retailed by Harry Winston in 1954.*

US\$ 20,000-30,000



**DIAMOND RING, TIFFANY & CO.**

Centering a cushion-cut diamond weighing 5.27 carats, framed and accented by round diamonds, size 6, signed *Tiffany & Co.*, with *British hallmarks*.

*Accompanied by Tiffany & Co. Diamond Certificate no. 18854066/E12090176 stating that the diamond is F color, VS1 clarity.*

US\$ 100,000-150,000



PROPERTY OF A WESTPORT, CONNECTICUT  
COLLECTOR

**CULTURED PEARL AND DIAMOND  
NECKLACE**

Composed of a strand of 37 gray cultured pearls  
measuring from approximately 13.6 to 11.0 mm,  
completed with a boule-shaped clasp set with  
round diamonds, *length 18½ inches.*

US\$ 4,000-6,000



PROPERTY FROM THE ESTATE OF MARCEL  
LINDENBAUM

**GOLD NECKLACE, DAVID WEBB**

Composed of hammered gold rope twist links,  
gross weight approximately 114 dwts, *length 15  
inches, signed Webb.*

US\$ 10,000-15,000



165

---

PROPERTY FROM THE ESTATE OF MARCEL  
LINDENBAUM

**TWO GOLD BRACELETS, DAVID WEBB**

Composed of hammered gold rope twist links,  
total gross weight approximately 85 dwts, *length*  
*7½ inches, signed Webb.*

US\$ 6,000-8,000



166

---

PROPERTY FROM THE ESTATE OF MARCEL  
LINDENBAUM

**GOLD, SAPPHIRE AND DIAMOND  
NECKLACE, TIFFANY & CO.**

Set with an oval-shaped sapphire weighing  
approximately 5.70 carats, framed with round  
diamonds, on a gold mesh band, *length 15 inches,*  
*signed Tiffany.* With signed pouch.

US\$ 15,000-20,000





167

---

PROPERTY FROM THE ESTATE OF MARCEL  
LINDENBAUM

**GOLD CUFF-BRACELET, DAVID WEBB**

Of hinged design, composed of hammered gold, the front with a geometric design, gross weight approximately 82 dwts, *internal circumference 6 inches, signed Webb.*

US\$ 6,000-8,000



168

---

PROPERTY FROM THE ESTATE OF MARCEL  
LINDENBAUM

**GOLD PENDANT-BROOCH, DAVID WEBB**

Designed as a heraldic lion, composed of textured gold, gross weight approximately 76 dwts, *signed Webb.*

US\$ 5,000-7,000

169

---

PROPERTY FROM THE ESTATE OF MARCEL  
LINDENBAUM

**GOLD NECKLACE AND BRACELET,  
DAVID WEBB, AND PAIR OF GOLD  
EARRINGS**

Each composed of decorative hammered gold chain links, total gross weight approximately 151 dwts, *necklace length 16¾ inches, bracelet length 7 inches, necklace may be combined with bracelet for added length, necklace and bracelet signed Webb, earrings likely later made from signed demi-parure.*

US\$ 15,000-20,000



169

PROPERTY FROM THE ESTATE OF MARCEL  
LINDENBAUM

**DIAMOND NECKLACE, MARIANNE  
OSTIER**

Composed of graduated round diamonds,  
accented with baguette diamonds, with a ribbon  
motif of baguette diamonds to either side, *length*  
*14<sup>7</sup>/<sub>8</sub> inches, may be worn as two bracelets, one*  
*segment with maker's mark for Marianne Ostier;*  
*1950s with later modifications.*

US\$ 30,000-50,000







171

---

PROPERTY OF A CONNECTICUT LADY

**DIAMOND RING**

Centering an emerald-cut diamond weighing 4.02 carats, flanked by emerald-cut diamonds, size 6.

*Accompanied by GIA report no. 5201340346 dated May 30, 2019 stating that the diamond is H color, VS1 clarity.*

US\$ 30,000-50,000



172

---

PROPERTY OF A PRIVATE COLLECTOR

**EMERALD AND DIAMOND RING,  
GUMBINER, AND PAIR OF EARCLIPS**

The ring centered on an emerald-cut emerald, within a domed mounting featuring lines of calibré-cut emeralds and pavé-set with round diamonds, accented by bullet-shaped diamonds, size 6, signed *Gumbiner*; and a pair of earclips of floral design, centering oval-shaped emeralds, the petals set with round and single-cut diamonds, the stems highlighted with baguette diamonds, unsigned. Fitted with posts.

US\$ 7,000-9,000



173

---

PROPERTY FROM A PRIVATE COLLECTION

**EMERALD, ONYX, ENAMEL AND  
DIAMOND JABOT PIN**

The carved emerald top set on a base pavé-set with single-cut diamonds and cabochon onyx, applied with enamel, the cap composed of fluted onyx surmounted by single-cut diamonds and buff-top emeralds; *circa 1925*.

US\$ 15,000-20,000



174

---

PROPERTY OF A LADY

**DIAMOND RING, GARRARD & CO. LTD.**

Set with a round diamond weighing 6.26 carats, size 6, *signed G&Co, with British hallmarks*.

US\$ 12,000-15,000



**SUITE OF AMETHYST AND DIAMOND  
JEWELS**

Comprising: a necklace suspending a fringe of oval and pear-shaped amethysts, embellished throughout with marquise, round, baguette and square-cut diamonds, *length 17½ inches, numbered N9039*; a ring designed as a cluster of pear and oval-shaped amethysts, highlighted with baguette and round diamonds, *size 7*; and a pair of pendant-earclips *en suite, numbered 13039*.

US\$ 30,000-50,000



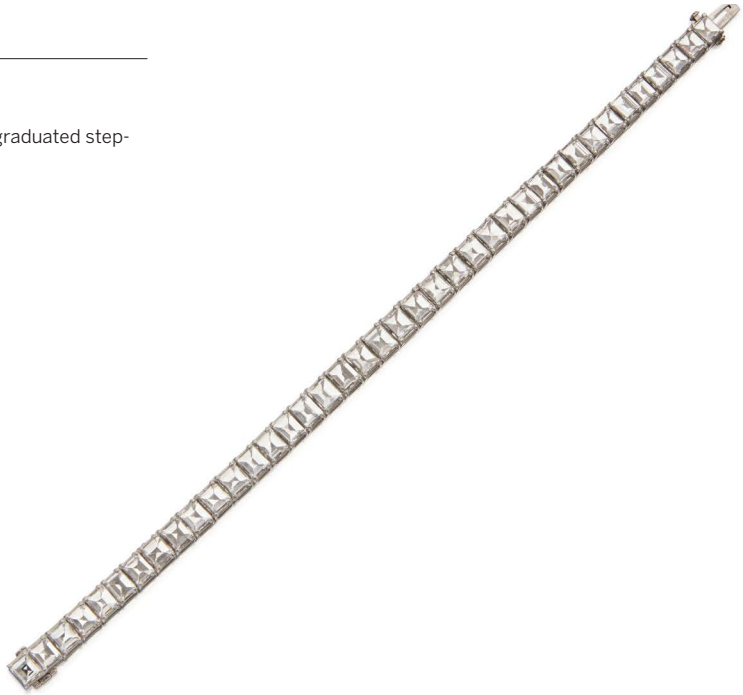
176

---

**DIAMOND BRACELET**

Designed as a line of 39 slightly graduated step-cut diamonds, *length 7 inches.*

US\$ 25,000-35,000



177

---

**DIAMOND, ONYX AND EMERALD CLIP-BROOCH, CARTIER, FRANCE**

Designed as a panther, the body pavé-set with numerous round diamonds, the eyes set with pear-shaped emeralds, the nose with an onyx cabochon, sitting atop a line of square-shaped cabochon onyx and square-cut diamonds, *signed Cartier, numbered DGA819, with French assay, workshop marks and Swiss hallmarks.* With signed box.

*Accompanied by a Certificate of Authenticity from Cartier.*

US\$ 30,000-50,000



**END OF SESSION ONE**



THIS PAGE  
LOTS 71, 343, 142 & 33

# SESSION TWO

NEW YORK  
WEDNESDAY  
25 SEPTEMBER 2019  
2:00 PM

LOTS 178-359

Please note these lots are  
not shown in actual size



178

---

PROPERTY OF A DISTINGUISHED LADY

**PAIR OF GOLD AND JADE PENDANT-  
EARCLIPS, DAVID WEBB**

Set with carved jade plaques in stylized  
hammered gold mountings, *signed Webb*.

US\$ 7,000-9,000



179

---

PROPERTY OF A LADY

**EMERALD AND CITRINE RING, TONY  
DUQUETTE**

Featuring a carved emerald cabochon, set atop an  
oval-shaped citrine, *size 7, signed Tony Duquette*.

US\$ 5,000-7,000



PROPERTY OF A LADY

**CORAL, ROCK CRYSTAL AND CITRINE  
NECKLACE, TONY DUQUETTE**

Composed of four strands of graduated coral beads, alternating with faceted rock crystal rondelles, completed by a clasp set with an oval-shaped citrine, *internal circumference 17<sup>3</sup>/<sub>4</sub> inches, signed Tony Duquette.*

*Please note this property cannot be shipped internationally due to endangered species materials.*

• US\$ 6,000-8,000



181

---

**PAIR OF TSAVORITE GARNET AND  
YELLOW SAPPHIRE EARCLIPS, TIFFANY  
& CO.**

Designed as palm fronds, centered on clusters of round, pear and triangle-shaped tsavorite garnets, further adorned with round tsavorite garnets and yellow sapphires, *signed Tiffany & Co., numbered 60416427*. Fitted with posts.

US\$ 8,000-12,000



182

---

**RUTILATED CAT'S-EYE QUARTZ  
BRACELET**

Of highly flexible design, the wide strap set with numerous rutilated cat's-eye quartz cabochons, *length 7 1/8 inches, signed Samuel Getz*.

US\$ 6,000-8,000



PROPERTY FROM A PRIVATE COLLECTION

**GOLD AND EMERALD PENDANT-  
BROOCH, DAVID WEBB, AND PAIR OF  
GOLD CUFFLINKS**

The pendant-brooch and cufflinks each designed as a gold alligator, the pendant-brooch set with oval cabochon emerald eyes, total gross weight approximately 54 dwts, *pendant-brooch signed Webb, cufflinks unsigned.*

US\$ 5,000-7,000



PROPERTY OF A LADY

**GOLD, SAPPHIRE AND DIAMOND  
NECKLACE, HEMMERLE**

Featuring five cushion-cut sapphires spaced by cabochon sapphire links and round diamond-set rondelles, extending to a line of sapphire beads spaced by single-cut diamond-set rondelles, length 14¼ inches, signed Hemmerle.

US\$ 7,000-9,000



185

---

PROPERTY FROM A PRIVATE COLLECTION,  
DALLAS, TEXAS

**GOLD WRISTWATCH, BUCCELLATI**

Featuring a gold dial engraved with Roman numerals, a cabochon sapphire set crown, and a bracelet composed of gold floral links, gross weight approximately 49 dwts, manual movement, length 6¼ inches, signed *Gianmaria Buccellati*, caseback numbered 411188, 38260.

US\$ 6,000-8,000



186

---

PROPERTY FROM A PRIVATE COLLECTION,  
DALLAS, TEXAS

**GOLD, RUBY AND SAPPHIRE PERFUME CASE, BUCCELLATI**

The bullet-shaped case embellished with decorative goldwork and round rubies, topped with a cabochon sapphire, signed *M. Buccellati*, four rubies missing.

US\$ 3,000-4,000





187

---

**QUARTZ AND RUBY NECKLACE**

Composed of graduated milky quartz beads measuring approximately 22.2 to 13.3 mm, interspersed with ruby beads and gold rondelles, the clasp accented by a round diamond, *length 27½ inches.*

US\$ 4,000-6,000

188

---

**RUBELLITE AND DIAMOND RING,  
HEMMERLE**

Bezel-set with an emerald-cut rubellite flanked by tapered baguette diamonds, within a geometric mounting, *size 6, signed Hemmerle.*

US\$ 3,000-5,000



**GOLD AND ENAMEL DRESS SET,  
DAVID WEBB**

Comprising: a pair of cufflinks and three studs, each designed as a gold ram's head, the face applied with black enamel, with red enamel eyes, total gross weight approximately 34 dwts, each signed Webb.

US\$ 4,000-6,000



190

---

**RUBY AND DIAMOND RING, ALEXANDRE  
REZA, FRANCE**

Set with a kite-shaped ruby measuring approximately 11.20 x 8.10 x 4.85 mm, within a shank pavé-set to the front with round diamonds, size 7¼, signed A. Reza, with French assay and maker's marks.

*Accompanied by AGL report no. 1100697 dated April 30, 2019 stating that the ruby is of Thai origin, with indications of heating.*

US\$ 5,000-7,000



**CARNELIAN AND ONYX NECKLACE,  
ALDO CIPULLO**

Composed of circular carnelian hoops alternating with pyramid-shaped onyx cabochons, *length 19½ inches, signed A.Cipullo, with maker's mark.*

US\$ 32,000-38,000





192

---

PROPERTY FROM A PRIVATE FLORIDA  
COLLECTION

**PAIR OF GOLD, SAPPHIRE, RUBY AND  
DIAMOND EARCLIPS, BULGARI**

Each featuring a heart-shaped sapphire,  
surmounted by baguette diamonds, the sides  
accented by cabochon rubies, *signed Bulgari, with  
French import and Italian registry marks.*

US\$ 4,000-6,000



193

---

**DIAMOND RING, CARTIER, FRANCE**

The domed center pavé-set with round diamonds,  
the border further set with round diamonds, size  
7¼, *signed Cartier, numbered 608804, with French  
assay and workshop marks.*

US\$ 12,000-15,000



**PAIR OF DIAMOND EARRINGS**

Set with a pair of cushion modified brilliant-cut diamonds weighing 1.55 and 1.53 carats, encircled by two rows of round diamonds, suspended from lines of round diamonds.

*Accompanied by two GIA reports:*

*No. 5136667486 dated September 4, 2015 stating that the 1.55 carat diamond is E color, SI2 clarity.*

*No. 2185282537 dated April 5, 2017 stating that the 1.53 carat diamond is E color, SI1 clarity.*

US\$ 15,000-20,000



PROPERTY OF A COLLECTOR

**SAPPHIRE AND DIAMOND RING**

Set with a cushion-cut sapphire weighing 8.04 carats, flanked by half moon-shaped diamonds, on a decorative band set with round diamonds at the sides, size 6, signed *Beauary*, numbered 20826.

*Accompanied by AGL report no. 1100434, dated April 26, 2019 stating that the sapphire is of Ceylon origin, with no indications of heating.*

US\$ 12,000-18,000

---

PROPERTY OF A PRIVATE COLLECTOR

**PAIR OF DIAMOND 'HIMALIA'  
EARCLIPS, CARTIER, FRANCE**

Composed of disk motifs set with round diamonds, *signed Cartier, numbered 71265A, with French assay and maker's marks.* Fitted with posts. With signed box.

US\$ 8,000-12,000



---

**AQUAMARINE AND DIAMOND RING,  
VERDURA**

Centering an emerald-cut aquamarine weighing approximately 4.40 carats, accented by three rows of round diamonds, *size 8¼, signed Verdura.*

US\$ 8,000-12,000



## SHEDDING LIGHT ON TIFFANY & CO.'S MOONSTONE JEWELS

Among the great spectrum of gemstones employed by Tiffany & Co., moonstones are perhaps the most closely intertwined with the firm's history. At the beginning of the 20th century, their billowy adularescence and soft cabochon form lent themselves perfectly to Louis Comfort Tiffany's sinuous, one-of-a-kind designs. By the 1940s, Tiffany & Co. was producing moonstone jewels in large numbers, often substituting the Montana sapphires preferred by Tiffany for rubies, typically

in simple, floral designs. The tradition continued with Jean Schlumberger who, in 1968, fashioned a jelly fish from the shimmering material, to commemorate an attack on his most important patron, Mrs. Paul "Bunny" Mellon, by a Portuguese man-o'-war. The brooch offered here takes a less menacing form, its moonstones mimicking the downy buds of a pussy willow. The choice of material, superlative construction and playful design makes this piece unmistakably Tiffany.

PROPERTY FROM A PRIVATE COLLECTION,  
DALLAS, TEXAS

**MOONSTONE AND DIAMOND CLIP-  
BROOCH, TIFFANY & CO.**

Designed as a pussywillow sprig composed of cabochon moonstones and round diamonds, gathered with baguette diamonds, *signed Tiffany & Co.*

**LITERATURE**

*For a brooch of similar design, see Tiffany's 20th Century A Portrait of American Style by John Loring, pages 138-139.*

US\$ 30,000-50,000



# THE GLAMOUR AND ART OF MARIANNE OSTIER'S JEWELS

LOTS 199-211

Marianne Ostier spent a career in jewelry attempting to create designs that are at once timeless reflections of mid-century modern glamour while also appealing to today's collectors. A trained painter and sculptor who attended the Vienna Academy of Arts and Crafts, Ostier considered the process of designing and wearing jewelry two distinct art forms. In a 1969 *Women's Wear Daily* article the

designer described her jewelry as being, 'modern in feeling but retaining a precious look.' That ethos is evident in the jewels that grace these pages. From the superb 'Galaxy' brooch, whose diamonds give off a celestial glow, to the sinuous diamond 'Doubleweave' bracelet, Ostier has the ability to give life to her jewels and enthuse and intrigue both the wearer and the observer.

199

---

PROPERTY FROM A DISTINGUISHED SOUTHERN CALIFORNIA FAMILY

## DIAMOND 'GALAXY' BROOCH, MARIANNE OSTIER

Of celestial design, composed of a swirl of round and pear-shaped diamonds, *signed Marianne Ostier; circa 1955*. With signed box.

### PROVENANCE

Sotheby's Parke-Bernet, New York, November 19-20, 1969, *A Collection of Jewelry Designed by Marianne Ostier*, lot 140.

US\$ 15,000-20,000



200

---

PROPERTY FROM A DISTINGUISHED SOUTHERN CALIFORNIA FAMILY

**DIAMOND 'DOUBLEWEAVE' BRACELET,  
MARIANNE OSTIER**

Designed as two undulating lines of round diamonds, embellished by pear and marquise-shaped diamonds, length 7 inches, with maker's mark for Marianne Ostier; circa 1950.

**PROVENANCE**

Sotheby's Parke-Bernet, New York, November 19-20, 1969, *A Collection of Jewelry Designed by Marianne Ostier*, lot 72.

US\$ 20,000-30,000



201

---

PROPERTY FROM A DISTINGUISHED SOUTHERN CALIFORNIA FAMILY

**PAIR OF DIAMOND PENDANT-EARCLIPS,  
MARIANNE OSTIER**

Suspending detachable pendants featuring two pear-shaped diamonds, topped and surmounted by round and marquise-shaped diamonds, with maker's mark for Marianne Ostier; circa 1950.

**PROVENANCE**

Sotheby's Parke-Bernet, New York, November 19-20, 1969, *A Collection of Jewelry Designed by Marianne Ostier*, lot 320.

US\$ 15,000-20,000



PROPERTY FROM A DISTINGUISHED SOUTHERN CALIFORNIA FAMILY

**DIAMOND NECKLACE, TIFFANY & CO.**

Designed as swags of graduated round and baguette diamonds, topped with marquise-shaped diamonds, extending to lines of baguette diamonds, *length 15 inches, signed Tiffany & Co.; circa 1960.*

**PROVENANCE**

Sotheby's Parke-Bernet, New York, February 2, 1967, lot 54.

US\$ 15,000-20,000





203

---

PROPERTY FROM A DISTINGUISHED SOUTHERN CALIFORNIA FAMILY

**DIAMOND BROOCH**

Of floral design, set with pear and marquise-shaped diamonds, the stem channel-set with baguette and tapered baguette diamonds, accented by round diamonds, *signed Van Clief*.

US\$ 6,000-8,000



204

---

PROPERTY FROM A DISTINGUISHED SOUTHERN CALIFORNIA FAMILY

**DIAMOND BRACELET**

Set with eighteen emerald-cut diamonds, spaced by pairs of baguette diamonds, *length 6 $\frac{3}{8}$  inches*.

US\$ 25,000-35,000



PROPERTY FROM A DISTINGUISHED SOUTHERN CALIFORNIA FAMILY

**DIAMOND NECKLACE**

Composed of graduated bezel-set round diamonds, suspending a pear-shaped diamond, length 15½ inches.

US\$ 10,000-15,000



□ **206** SOLD WITHOUT RESERVE

---

PROPERTY FROM A DISTINGUISHED SOUTHERN CALIFORNIA FAMILY

**PAIR OF DIAMOND EARCLIPS**

Each centering a pear-shaped diamond, framed and surmounted by marquise-shaped diamonds, accented with a round diamond.

US\$ 1,500-2,000



**207**

---

PROPERTY FROM A DISTINGUISHED SOUTHERN CALIFORNIA FAMILY

**TWO-COLOR GOLD AND DIAMOND BRACELET, TIFFANY & CO.**

Designed as a belt, composed of yellow and white gold hexagonal links, the front embellished with star motifs, accented by round diamonds, gross weight approximately 40 dwts, *internal circumference 6 inches, adjustable, signed Tiffany & Co; circa 1950.*

US\$ 6,000-8,000



PROPERTY FROM A DISTINGUISHED SOUTHERN CALIFORNIA FAMILY

**CULTURED PEARL AND DIAMOND NECKLACE**

Composed of 63 graduated cultured pearls measuring approximately 14.4 to 10.0 mm, the ball clasp set with round diamonds, *length 30½ inches.*

**PROVENANCE**

Sotheby's New York, Magnificent Jewels, October 17, 1984, Sale 5222, Lot 624

US\$ 8,000-12,000



PROPERTY FROM A DISTINGUISHED SOUTHERN CALIFORNIA FAMILY

**GOLD, GEM-SET AND DIAMOND  
BANGLE-BRACELET, ILIAS LALAOUNIS**

Of hinged ropetwist design, the terminals each adorned with a lion's head, the eyes set with round rubies, further accented by single-cut diamonds, round sapphires and emeralds, gross weight approximately 43 dwts, *internal circumference 6½ inches, signed Ilias Lalaounis.*

US\$ 2,000-3,000



ALTERNATE VIEW

PROPERTY FROM A DISTINGUISHED SOUTHERN CALIFORNIA FAMILY

**TWO-COLOR GOLD WRISTWATCH,  
PATEK PHILIPPE**

The bracelet composed of textured white and yellow gold hexagonal links, concealing a round dial featuring gold baton indicators, manual movement, gross weight approximately 54 dwts, *length 6¾ inches, dial and clasp signed Patek Philippe, Geneve; 1961.*

*Accompanied by Certificate of Origin, Warranty and Extract from the Archives from Patek Philippe.*

US\$ 3,000-5,000

PROPERTY FROM A DISTINGUISHED SOUTHERN CALIFORNIA FAMILY

**DIAMOND NECKLACE**

Designed as a line of graduated round diamonds, the clasp accented with marquise-shaped and baguette diamonds, *length 15<sup>3</sup>/<sub>8</sub> inches.*

US\$ 12,000-15,000



FROM THE COLLECTION OF KATHERINE  
GREGORY THOMAS

**EMERALD AND DIAMOND RING**

Set with an emerald-cut emerald weighing approximately 8.00 carats, framed with round and marquise-shaped diamonds, size 5¾.

*Accompanied by AGL report no. 1101594 dated June 26, 2019 stating that the emerald is of Colombian origin, clarity enhancement: minor, type: traditional.*

US\$ 40,000-60,000



PROPERTY OF A LADY, SCARSDALE, NEW YORK

**DIAMOND RING, TIFFANY & CO.**

Centering a round diamond weighing 4.18 carats, size 4½, signed *Tiffany & Co.*, numbered S00769. With signed box.

*Accompanied by GIA report no. 10621863 dated May 7, 1999 stating that the diamond is E color, VS2 clarity.*

*Accompanied by Tiffany & Co. Diamond Certificate S00769/SSL400008 stating that the diamond is E color, VS2 clarity.*

US\$ 70,000-100,000



214

---

PROPERTY FROM A PRIVATE COLLECTION,  
DALLAS, TEXAS

**RUBY AND DIAMOND BRACELET**

Composed of alternating slightly graduated oval-shaped rubies and diamonds, length 7 inches, with workshop mark.

Accompanied by AGL report no. 1102809 dated August 5, 2019 stating that the rubies are of Burmese origin, with indications of heating, clarity enhancement: insignificant to minor.

US\$ 25,000-35,000



215

---

**RUBY AND DIAMOND RING, OSCAR HEYMAN & BROTHERS**

Centering a cushion-cut ruby weighing 3.05 carats, flanked by two cushion-cut diamonds, size 6¼, numbered 303009, with maker's mark for Oscar Heyman & Brothers.

Accompanied by GRS report no. GRS2018-011223 dated January 8, 2018 stating that the ruby is of Mozambique origin, with no indications of heating.

Accompanied by Certificate of Authenticity from Oscar Heyman & Brothers.

US\$ 20,000-30,000





**CULTURED PEARL AND DIAMOND  
NECKLACE**

Composed of 23 cultured pearls measuring approximately 19.4 to 16.1 mm, completed by a boule-shaped clasp pavé-set with round diamonds, length 17¾ inches.

US\$ 20,000-30,000



217

---

PROPERTY OF A LADY, LOS ANGELES,  
CALIFORNIA

**SAPPHIRE AND DIAMOND RING**

Centering a cushion-cut sapphire weighing 14.53 carats, framed and accented by round diamonds, size 7¼.

*Accompanied by AGL report no. 1102397 dated August 2, 2019 stating that the sapphire is of Ceylon origin, with no indications of heating.*

US\$ 12,000-15,000



218

---

**PAIR OF DIAMOND EARCLIPS, HARRY  
WINSTON**

Designed as hoops, set with round diamonds,  
*numbered 117880, with maker's mark.*

US\$ 12,000-15,000



219

---

**SAPPHIRE AND DIAMOND RING**

Centering a sugarloaf cabochon sapphire weighing approximately 9.00 carats, flanked by two heart-shaped diamonds, size 5.

US\$ 10,000-15,000



220

---

PROPERTY FROM A PRIVATE COLLECTION,  
DALLAS, TEXAS

**PAIR OF DIAMOND EARRINGS**

The foliate surmounts pavé-set with round diamonds, suspending cascading clusters of briolette diamonds.

US\$ 12,000-15,000



**GOLD AND TURQUOISE BRACELET,  
VHERNIER**

Composed of polished gold links, the sides with concealed turquoise panels, gross weight approximately 108 dwts, length 6¾ inches, signed *Vhernier*, numbered 211, with Italian assay and registry marks.

US\$ 10,000-15,000



□ 222 SOLD WITHOUT RESERVE

**AMETHYST AND DIAMOND NECKLACE**

Designed as a torsade, composed of ten strands of amethyst beads, the gold clasp adorned with round diamonds, length 18¾ inches, with Italian registry mark.

US\$ 2,000-3,000

223

---

PROPERTY OF A LADY, NEW YORK, NEW YORK

**GOLD AND DIAMOND RING**

Set with round diamonds, the front in a rectangular pattern, the sides within open work petal-shaped frames, size  $4\frac{3}{4}$ , signed *Frank's*.

US\$ 4,000-6,000



224

---

**PAIR OF MULTI-COLORED SAPPHIRE,  
AMETHYST AND DIAMOND EARCLIPS**

The surmounts set with a cluster of pear-shaped pink, purple and yellow sapphire cabochons, suspending round diamonds terminating on pear-shaped amethyst cabochons, with *Swiss hallmarks*.

US\$ 5,000-7,000

**GOLD, PEARL, ENAMEL, DIAMOND AND RUBY NECKLACE**

Designed as a serpent, the gold head applied with blue enamel, set with pearls, old mine and rose-cut diamonds, the eyes embellished with cabochon rubies, the body composed of scale-like gold links, *length 15¾ inches; mid-19<sup>th</sup> century*. With fitted box.

*Please note that the pearls have not been tested for natural origin.*

US\$ 7,000-9,000



226

---

PROPERTY FROM A PRIVATE COLLECTION

**DIAMOND RING**

Set with an oval-shaped diamond weighing approximately 8.50 carats, within a fluted gold mounting, size 5¼.

US\$ 20,000-30,000



227

---

PROPERTY FROM A PRIVATE COLLECTION

**GOLD, SILVER, DIAMOND AND ENAMEL  
BROOCH**

Set with three antique pear-shaped diamonds, accented with old mine and single-cut diamonds, within a mounting of garland design, applied with blue enamel; *mid-19th century with later modifications.*

US\$ 15,000-20,000



**GOLD, QUARTZ, JADE, YELLOW  
SAPPHIRE AND DIAMOND PENDANT-  
NECKLACE, HENRY DUNAY**

Composed of milky quartz beads, suspending a detachable brushed gold pendant set with an oval-shaped yellow sapphire, a jade hoop, and round and pear-shaped diamonds, finished with a brushed gold clasp, *length 17½ inches, signed Dunay, numbered E3296, with maker's marks.*

US\$ 7,000-9,000





**PAIR OF EMERALD, JADE AND  
DIAMOND EARRINGS, GOSHWARA**

Each suspending an openwork carved jade plaque, surmounted by a carved emerald, framed and accented by round diamonds, *signed Goshwara*. Fitted with posts.

US\$ 8,000-12,000



PROPERTY FROM A NEW YORK COLLECTION

**FANCY YELLOW DIAMOND AND  
DIAMOND RING**

Set with a cut-cornered rectangular modified brilliant Fancy Yellow diamond weighing 9.10 carats, flanked by half moon-shaped diamonds, size 6.

*Accompanied by GIA report no. 16391448 dated November 9, 2007 stating that the diamond is Fancy Yellow, Natural Color, SI1 clarity.*

US\$ 80,000-120,000

**GOLD, PASTE AND MICROMOSAIC  
NECKLACE**

Featuring twelve micromosaic landscapes depicting various Roman archaeological sites set in a blue paste ground mixed on the reverse side with goldstone glass, length 15½ inches; first quarter of the 19th century.

*For a necklace of similar design see Micromosaics: Private Collections by Jeanette Hanisee Gabriel, page 211, figure 169; special thanks to Jeanette Hanisee Gabriel for helping to identify the monuments (see condition report).*

US\$ 5,000-7,000



232

---

PROPERTY FROM A PRIVATE COLLECTION,  
DALLAS, TEXAS

**GOLD AND MICROMOSAIC RING**

Featuring a micromosaic landscape of the  
Roman Forum, applied on red hardstone within a  
hammered gold mounting, size 7<sup>3</sup>/<sub>4</sub>.

US\$ 3,000-5,000



233

---

PROPERTY OF A PRIVATE COLLECTOR, PARK  
CITY, UTAH

**GOLD, MICROMOSAIC AND PASTE  
BROOCH**

Depicting St. Peter's Square and St. Peter's  
Basilica composed of multi-colored tesserae, on  
a black paste background, framed with polished  
gold; circa 1830.

US\$ 5,000-7,000





□ **234** SOLD WITHOUT RESERVE

---

**GOLD AND HARDSTONE CAMEO RING**

Bezel-set with a sardonyx cameo depicting a Hellenistic-style portrait bust, gross weight approximately 8 dwts, size 10<sup>1</sup>/<sub>4</sub>; 19th century cameo in 20th century mounting.

US\$ 1,500-2,000



**235**

---

**GOLD AND ONYX CAMEO RING**

Bezel-set with an onyx cameo depicting a bust in the style of Alexander the Great, portrayed with the horns of Ammon, in a decorative gold frame, gross weight approximately 8 dwts, size 9<sup>3</sup>/<sub>4</sub>; 19th century cameo in 20th century mounting.

US\$ 4,000-6,000

236

---

**GOLD AND GLASS INTAGLIO RING**

The opaque black glass intaglio depicting Mercury holding a caduceus, bearing the name Pichler (ΠΙΧΛΕΡ in Greek letters), gross weight approximately 9 dwts, size 11; early 19th century intaglio in 20th century mounting.

US\$ 4,000-6,000



237

---

**GOLD AND SAPPHIRE INTAGLIO RING**

The sapphire intaglio depicting the bust of a bearded Roman Imperial-style man, gross weight approximately 8 dwts, size 10¼; 19th century intaglio in 20th century mounting.

US\$ 5,000-7,000



PROPERTY OF A GENTLEMAN

**GOLD, ENAMEL AND SEED PEARL  
NECKLACE**

Designed as a series of gold floral and dragonfly motifs, applied with polychrome enamel, embellished with seed pearls, on a fine link chain, gross weight approximately 20 dwts, length 17½ inches; circa 1900.

US\$ 3,000-5,000



239

---

PROPERTY FROM A PRIVATE COLLECTION,  
DALLAS, TEXAS

**GOLD, FAVRILE GLASS, SEED PEARL,  
ENAMEL AND DIAMOND BROOCH**

Designed as a bat composed of Favrite glass,  
framed in a decorative gold mount, topped  
with peacock colored plique-à-jour enamel,  
suspending an old European-cut diamond and a  
seed pearl; *circa 1900*.

US\$ 3,000-4,000



---

□ **240** SOLD WITHOUT RESERVE

---

**SAPPHIRE AND DIAMOND RING**

Centering an oval cabochon sapphire measuring  
approximately 10.1 x 8.9 x 6.8 mm, framed by old  
European-cut diamonds, size 6¼.

*Accompanied by AGL report no. 1092069 dated  
April 25, 2018 stating that the sapphire is of Thai  
origin, with no indications of heating.*

US\$ 10,000-15,000



**GOLD NECKLACE AND PAIR OF  
EARCLIPS, VAN CLEEF & ARPELS**

The necklace composed of bellflower-shaped gold links, stacked in an articulated line, the clasp accented with a small round ruby, length 14¼ inches, signed Van Cleef Arpels, numbered N.Y.11907; together with a pair of matching earclips; signed Van Cleef & Arpels, numbered N.Y.11907.

US\$ 7,500-10,000





**EMERALD AND DIAMOND PENDANT**

Set with a pear-shaped emerald cabochon weighing 30.22 carats, surmounted by a pear-shaped diamond, signed *Neiman Marcus*.

Accompanied by AGL report no. 1100050 dated April 22, 2019 stating that the emerald is of Colombian origin, clarity enhancement: minor to moderate, type: modern.

US\$ 45,000-55,000



PROPERTY FROM A PRIVATE COLLECTION

**GOLD, WOOD, EMERALD AND DIAMOND BRACELET**

Designed as a coiled snake applied with wooden scales, the head and tip of the tail pavé-set with round diamonds, completed with pear-shaped emerald eyes, *internal circumference 5½ inches, expandable.*

*Please note this property cannot be shipped internationally due to endangered species materials.*

• US\$ 10,000-15,000



PROPERTY OF A PRIVATE COLLECTOR

**THREE STEEL AND GOLD 'TUBOGAS'  
BRACELETS, BULGARI**

Each of sprung design, two with decorative gold terminals, one with the inscription '*Princess Love, Pie 6-16 '97,*' and a third featuring a pink tourmaline sugarloaf cabochon and two similarly-cut peridots, *internal circumference 6 $\frac{3}{8}$  inches,* each signed Bulgari, two numbered 7631 and 7586 respectively, each with Italian registry marks.

US\$ 5,000-7,000





**PAIR OF EMERALD, DIAMOND  
AND ONYX PENDANT-EARRINGS,  
GOSHWARA**

Suspending detachable pendants centering two cushion-cut emeralds, surmounted by two rose-cut diamonds, bordered by onyx segments, surmounts and pendants interchangeable, signed Goshwara.

US\$ 45,000-55,000

**GOLD, MOTHER-OF-PEARL AND  
DIAMOND BRACELET-WATCH, VAN  
CLEEF & ARPELS**

The mother-of-pearl dial flanked by the Roman numerals 'IX' and 'III' set with single-cut diamonds, in a polished gold case accented with round diamonds, on a bracelet composed of three rows of gold snake chains, with a round diamond accented clasp, quartz movement, length 7 inches, caseback signed Van Cleef & Arpels, numbered 142146, with maker's mark and Swiss hallmarks.

*Please note this property cannot be shipped internationally due to endangered species materials.*

• US\$ 6,000-8,000



PROPERTY OF A PRIVATE COLLECTOR

**DIAMOND, ONYX AND EMERALD 'DAME  
À LA PANTHÈRE' NECKLACE, CARTIER,  
FRANCE**

The front designed as a panther, pavé-set with round diamonds, with a pear-shaped emerald eye, the nose and collar composed of polished onyx, extending to bar-shaped links, accented with round diamonds, *length 17 inches, signed Cartier, numbered 46112B, with French assay and workshop marks. With signed box.*

US\$ 30,000-50,000



248

---

PROPERTY OF A PRIVATE COLLECTOR

**PAIR OF GOLD, TSAVORITE GARNET,  
ONYX AND DIAMOND 'PANTHÈRE'  
EARCLIPS, CARTIER, FRANCE**

Designed as panthers, composed of polished gold tassels, the eyes set with pear-shaped tsavorite garnets, the nose and neck further accented by round diamonds and onyx cabochons, *signed Cartier, numbered 86351B, with French assay and maker's marks*. Fitted with posts. With signed box.

US\$ 7,000-9,000



249

---

**EMERALD AND DIAMOND RING,  
PIRANESI**

Centering an emerald-cut emerald weighing approximately 4.05 carats, flanked by two cushion-cut emeralds weighing approximately 2.00 and 1.95 carats, the shoulders accented by round diamonds, *size 6, signed Piranesi*.

*Accompanied by AGL report no. 1102018 dated July 11, 2019 stating that the emeralds are of Zambian origin, clarity enhancement: minor, type: traditional.*

US\$ 5,000-7,000



250

---

PROPERTY OF A PRIVATE COLLECTOR

**PAIR OF GOLD EARCLIPS, DAVID WEBB**

Of door knocker design, composed of hammered gold, gross weight approximately 47 dwts, signed Webb. Fitted with posts.

US\$ 5,000-7,000



251

---

**GOLD, DIAMOND, EMERALD AND ENAMEL BRACELET, BULGARI**

Of sprung design, the dragon head accented by marquise-shaped and round diamonds, the eyes set with pear-shaped emeralds, the body composed of gold scales applied with blue and green enamel, gross weight approximately 61 dwts, internal circumference expandable, signed Bulgari.

US\$ 25,000-35,000



**GOLD AND DIAMOND NECKLACE,  
DAVID WEBB**

Supporting a barrel-shaped pendant set with round diamonds, the chain composed of gold links alternating with similarly designed barrel-shaped links, gross weight approximately 72 dwts, length 28 inches, chain detaches into 4½-inch and 5½-inch segments for a variety of wear, signed Webb.

US\$ 12,000-18,000

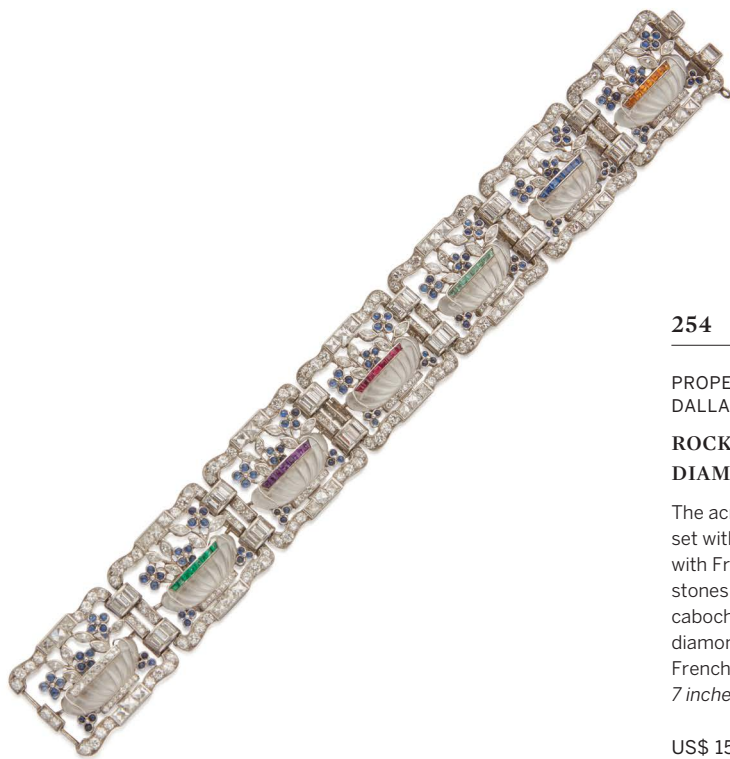


PROPERTY OF A COLORADO COLLECTOR

**PAIR OF LAVENDER JADE, SAPPHIRE  
AND DIAMOND EARRINGS**

Each suspending lavender jade plaques carved with a floral pattern, from an articulated surmount set with buff-top calibr -cut sapphires, and old European and single-cut diamonds.

US\$ 12,000-15,000



## 254

PROPERTY FROM A PRIVATE COLLECTION,  
DALLAS, TEXAS

**ROCK CRYSTAL, GEM-SET AND  
DIAMOND BRACELET**

The acrostic bracelet composed of seven links set with carved rock crystal vessels, trimmed with French-cut diamonds and calibr -cut colored stones spelling out the word 'dearest', containing cabochon sapphire and marquise-shaped diamond flowers, framed with old European, French, single-cut and baguette diamonds, *length 7 inches; circa 1930.*

US\$ 15,000-20,000



255

---

PROPERTY FROM A DISTINGUISHED  
COLLECTION

**SAPPHIRE AND DIAMOND RING**

Set with an emerald-cut sapphire weighing 8.06 carats, framed with baguette, round and single-cut diamonds in a geometric design, size 6¼.

*Accompanied by AGL report no. 1101391 dated June 12, 2019 stating that the sapphire is of Burmese origin, with no indications of heating.*

US\$ 35,000-55,000



256

---

PROPERTY FROM A PRIVATE COLLECTION,  
DALLAS, TEXAS

**TWO DIAMOND BRACELETS**

Each designed as a line of baguette diamonds,  
*length 7 inches.*

US\$ 15,000-20,000

**PAIR OF RUBELLITE AND DIAMOND  
EARCLIPS, DAVID WEBB**

Set with a pair of square mixed-cut rubellites encircled by double rows of round diamonds, signed *Webb*.

US\$ 10,000-15,000



258

**RUBY, SAPPHIRE AND DIAMOND RING**

Of openwork design, set with four old European-cut diamonds, accented with a cushion-cut sapphire and an oval-shaped ruby weighing 2.01 carats, further highlighted by single-cut diamonds, size 6½; 1920s.

*Accompanied by GRS report no. 092160 dated September 20, 2010 stating that the ruby is of Burmese origin, with no indications of heating.*

*Accompanied by Gübelin report no. 1008561 dated August 26, 2010 stating that the ruby is of Burmese origin, with no indications of heating.*

*Accompanied by CDC report no. 0809286 dated September 14, 2008 stating that the ruby is of Burmese origin, with no indications of heating.*

US\$ 15,000-20,000

259

---

PROPERTY OF A WESTPORT, CONNECTICUT  
COLLECTOR

### RUBY AND DIAMOND BRACELET

Of openwork design, featuring four lozenge-shaped clusters of cabochon rubies, set throughout with round and single-cut diamonds, embellished with baguette diamonds, *length 6¾ inches.*

US\$ 15,000-20,000



260

---

### SAPPHIRE AND DIAMOND RING

Set with a cushion-cut sapphire weighing 3.78 carats, between cushion-cut diamonds, *size 6¼.*

*Accompanied by AGL report no. 1100254 dated May 6, 2019, stating that the sapphire is of Kashmir origin, with no indications of heating.*

US\$ 60,000-80,000



PROPERTY FROM A PRIVATE COLLECTION,  
DALLAS, TEXAS

**DIAMOND NECKLACE**

Designed as a long line of round diamonds, *length*  
*30¼ inches.*

US\$ 25,000-35,000



262

---

**PAIR OF CULTURED PEARL AND  
DIAMOND EARCLIPS**

Featuring two baroque cultured pearls measuring approximately 23.0 x 17.0 x 13.4 mm and 23.1 x 17.5 x 15.3 mm, the surmounts of foliate design set with round and marquise-shaped diamonds, gross weight approximately 36 dwts.

US\$ 5,000-7,000



263

---

PROPERTY OF A LADY, NEW CANAAN,  
CONNECTICUT

**SAPPHIRE AND DIAMOND RING**

Centering an octagonal step-cut sapphire weighing 9.75 carats, framed by round diamonds, size 6¾.

*Accompanied by AGL report no. 1101420 dated June 20, 2019 stating that the sapphire is of Burmese origin, with no indications of heating.*

US\$ 15,000-20,000



PROPERTY FROM A PRIVATE COLLECTION,  
CANADA

**DIAMOND RING**

Set with an emerald-cut diamond weighing 10.09  
carats, size 6½.

*Accompanied by GIA report no. 2205442206  
dated July 12, 2019 stating that the diamond is J  
color, SI2 clarity.*

US\$ 55,000-75,000



265

---

PROPERTY FROM A PRIVATE COLLECTION,  
DALLAS, TEXAS

**DIAMOND BRACELET**

Designed as a wide and highly flexible band of  
round diamonds, *length* 6¾ inches.

US\$ 20,000-30,000



266

---

**DIAMOND RING**

Designed as an eternity band, set with 17 square  
emerald-cut diamonds, size 6½.

US\$ 12,000-15,000



**AMETHYST, CHRYSOPRASE AND ROCK  
CRYSTAL NECKLACE**

Composed of polished amethyst beads measuring approximately 18.8 mm, alternating with polished chrysoprase beads measuring approximately 10.1 mm, spaced by faceted rock crystal beads, *length 24¾ inches.*

US\$ 2,000-3,000





**PAIR OF DIAMOND EARRINGS**

Of floral design, each set with five pear-shaped diamonds centered on a round diamond.

*Accompanied by 10 GIA reports dated from October 14, 2016 to November 7, 2017, stating that the pear-shaped diamonds weighing 0.47 to 0.40 carat range from E-G color, VS2-SI1 clarity.*

US\$ 10,000-15,000



269

PROPERTY FROM THE PERELMAN FAMILY  
**TANZANITE DIAMOND RING AND PAIR OF EARRINGS**

The ring set with an elongated cushion-cut tanzanite weighing approximately 9.55 carats, flanked by square mixed-cut diamonds, size 6½, the earrings each set with a cushion-cut tanzanite, framed and accented by round diamonds.

US\$ 4,000-6,000





270

---

PROPERTY FROM A BELGIAN ESTATE

**DIAMOND RING**

Set with a round diamond weighing 5.38 carats, size 5½.

*Accompanied by GIA report no. 6204354472 dated June 4, 2019 stating that the diamond is K color, VVS2 clarity. Together with the original working diagram stating that the diamond may be potentially Internally Flawless.*

US\$ 40,000-60,000



271

---

**RUBY AND DIAMOND BROOCH**

The open work geometric plaque centered on a carved ruby, set throughout with old European, round, single-cut and baguette diamonds, accented with calibr -cut rubies; circa 1930.

US\$ 8,000-12,000

272

---

**SAPPHIRE AND DIAMOND RING**

The cushion-cut sapphire weighing 2.52 carats, set within a gallery of geometric design, accented with old European-cut diamonds, size 5½.

*Accompanied by AGL report no. 1098723 dated March 14, 2019 stating that the sapphire is of Kashmir origin, with no indications of heating.*

US\$ 10,000-15,000



273

---

**PAIR OF DIAMOND EARRINGS**

Designed as hoops, set with numerous round diamonds, *signed Assil NY.*

US\$ 15,000-20,000





274

---

PROPERTY FROM A COLLECTION

**PAIR OF ONYX AND DIAMOND  
EARRINGS**

The marquise-shaped onyx and old European-cut diamond-set surmounts suspending pear-shaped diamonds, framed by polished onyx, encircled by rose-cut diamonds, topped with single-cut diamonds; *circa 1925*.

US\$ 8,000-12,000



275

---

PROPERTY FROM A COLLECTION

**DIAMOND, ONYX AND ENAMEL  
BROOCH, FRANCE**

The oval-shaped brooch set throughout with old European, old mine and single-cut diamonds, highlighted with lines of black enamel, framed by calibré-cut onyx, *numbered 49436, with French assay and workshop marks, one onyx missing; circa 1925*.

US\$ 6,000-8,000

276

---

**PAIR OF ROCK CRYSTAL, DIAMOND  
AND GEM-SET EARRINGS, RAYMOND  
YARD**

Suspending carved rock crystal flowers centered by round rubies, topped by emerald cabochons, carved sapphires and onyx batons, surmounted by carved rubies, and highlighted throughout with round, baguette and marquise-shaped diamonds, *signed Yard*.

US\$ 15,000-20,000



277

---

**RUBY AND DIAMOND RING**

Centering a cushion-cut ruby weighing 2.33 carats, framed and accented by round, baguette and single-cut diamonds, size 6½.

*Accompanied by AGL report no. 1095485 dated October 18, 2018 stating that the ruby is of Burmese origin, with no indications of heating.*

US\$ 8,000-12,000





278

PROPERTY FROM AN AUSTRIAN COLLECTION  
**PAIR OF NATURAL PEARL AND  
DIAMOND EARRINGS**

Suspending a natural button-shaped pearl of gray body color measuring approximately 12.8 x 12.7 mm and a natural button-shaped pearl of white body color measuring approximately 13.2 x 12.7 x 9.7 mm, from surmounts of fringe design set with old mine, old European and single-cut diamonds, with Austrian hallmarks; circa 1930.

Accompanied by GIA report no. 6204388860 dated July 11, 2019 stating that the pearls are natural, saltwater.

US\$ 25,000-35,000



279

PROPERTY FROM A DESCENDANT OF MURIEL  
COLGATE DAMON

**SAPPHIRE AND DIAMOND BRACELET**

Of buckle design, composed of links set with calibré-cut sapphires, pavé-set with round and single-cut diamonds, and accented with baguette diamonds, length 7 inches; circa 1930.

**LITERATURE**

*A similar bracelet in rubies and diamonds, attributed to William Scheer Inc., is illustrated in American Jewelry: Glamour and Tradition, by Penny Proddow and Debra Healy, page 120, fig. 93.*

US\$ 15,000-20,000

280

---

**SAPPHIRE, DIAMOND AND CULTURED PEARL NECKLACE**

Suspending two tassels each composed of 12 strands of sapphire beads and cultured pearls, capped and surmounted by round diamonds and oval-shaped sapphires, on a black satin cord featuring a slide set with an emerald-cut diamond weighing 3.25 carats and round diamonds, the cord further decorated with round diamond accents, length 33 inches.

*Accompanied by GIA report no. 2165419854 dated July 22, 2014 stating that the diamond weighing 3.25 carats is K color, VS1 clarity.*

US\$ 28,000-32,000



281

---

PROPERTY OF A LADY, FLORIDA

**DIAMOND AND SAPPHIRE RING,  
RAYMOND YARD**

Centering a round diamond weighing 5.02 carats, flanked by two shield-shaped sapphires, further accented by tapered baguette and round diamonds, size 7, signed Yard.

*Accompanied by GIA report no. 2151985550 dated March 10, 2014 stating that the diamond is L color, VS1 clarity.*

US\$ 25,000-35,000



282

---



**DIAMOND RING**

Designed as an eternity band, set with 17 oval-shaped diamonds, size 6¼.

US\$ 8,000-10,000



283

---

PROPERTY OF A GENTLEMAN

**DIAMOND BRACELET**

Of geometric openwork design, set throughout with old European and single-cut diamonds, highlighted with baguette diamonds, *length 7½ inches.*

US\$ 15,000-20,000



### PAIR OF DIAMOND STUD EARRINGS

Set with a pair of round diamonds weighing 0.29 and 0.28 carat, encircled by two rows of smaller round diamonds.

*Accompanied by two GIA reports:*

*No. 5172843112 dated September 9, 2016 stating that the diamond weighing 0.29 carat is D color, Internally Flawless, with Excellent Cut and Symmetry.*

*No. 7258961423 dated June 5, 2017 stating that the diamond weighing 0.28 carat is D color, Internally Flawless, with Excellent Cut and Polish.*

US\$ 3,000-5,000



### 285

---

#### PROPERTY OF A FLORIDA PRIVATE COLLECTOR SAPPHIRE AND DIAMOND RING

Centering an emerald-cut sapphire weighing 8.69 carats accented by baguette diamonds, size 6¼.

*Accompanied by AGL report no. 1101835 dated July 3, 2019 stating that the sapphire is of Madagascar origin, with indications of heating.*

US\$ 15,000-20,000

PROPERTY FROM A COLLECTION

**NATURAL PEARL, CULTURED PEARL,  
EMERALD AND DIAMOND NECKLACE**

Composed of a strand of 58 natural pearls and one cultured pearl measuring from approximately 9.1 to 4.7 mm, completed by a clasp centering a marquise-shaped diamond framed by calibr -cut emeralds, *length 16¼ inches*.

*Accompanied by GIA report no. 2205402872 stating that the 58 pearls are natural, saltwater.*

US\$ 15,000-20,000



287

---

**PAIR OF DIAMOND PENDANT-  
EARRINGS, TIFFANY & CO.**

The rose-cut diamond surmounts suspending cascading reverse-set marquise-shaped diamonds, further supporting strands of round diamonds, each strand terminating with a pear-shaped rose-cut diamond, *signed T&Co.*

US\$ 25,000-35,000



288

---

PROPERTY FROM A BELGIAN ESTATE

**DIAMOND RING**

Set with a round diamond weighing 7.05 carats, size 6¼.

*Accompanied by GIA report no. 2205354467 dated June 4, 2019 stating that the diamond is K color, VVS2 clarity.*

US\$ 55,000-65,000



289

---

PROPERTY OF A LADY

**DIAMOND BRACELET**

Of geometric openwork design, set throughout with old European and single-cut diamonds, embellished with baguette diamonds, *length 7 inches, bracelet signed Janesich, with French assay marks, central plaque partially signed Van Cleef & Arpels.*

US\$ 15,000-20,000



290

---

**RUBY AND DIAMOND RING**

Set with an oval-shaped ruby weighing 4.15 carats, bordered by trapeze-cut diamonds, the shoulders accented with trapeze-cut and baguette diamonds, size 6 $\frac{1}{4}$ .

*Accompanied by AGL report no. CS 34204 dated August 31, 2000 stating that the ruby is of Burmese origin, with no indications of heating.*

US\$ 30,000-50,000



291

---

PROPERTY FROM AN ANTIQUE JEWELRY  
COLLECTION, NEW YORK CITY

**EMERALD AND DIAMOND BRACELET**

Composed of alternating lines of calibr -cut emeralds and old European and single-cut diamonds, accented with triangle-shaped emeralds, *length 7¼ inches; circa 1925.*

US\$ 6,000-8,000



292

---

PROPERTY OF A PRIVATE COLLECTOR

**RUBY AND DIAMOND RING**

Of crossover design, set with a cushion-cut ruby weighing 3.03 carats, and an old mine-cut diamond weighing approximately 1.75 carats, highlighted with baguette diamonds and calibr -cut rubies, *size 7¼.*

*Accompanied by AGL report no. 1101693 dated June 25, 2019 stating that the ruby is of Thai origin, with no indications of heating.*

US\$ 15,000-20,000





293

---

PROPERTY OF A LADY

**DIAMOND NECKLACE**

The front designed as a stylized openwork buckle, set with marquise, half-moon, bullet, baguette and old European-cut diamonds, tapering at the sides to a line of old European-cut diamonds, length 14½ inches.

US\$ 10,000-15,000

294

---

**RUBY AND DIAMOND RING, FRANCE**

Set with a cushion-cut ruby weighing 3.03 carats, surrounded by alternating old mine-cut and baguette diamonds, size 7¼, with French assay and workshop marks.

Accompanied by AGL report no. 1095407 dated October 1, 2018 stating that the ruby is of Burmese origin, with no indications of heating.

US\$ 40,000-60,000





PROPERTY OF A PRIVATE COLLECTOR

**DIAMOND RING, CARTIER**

Set with a cushion-cut diamond weighing 3.33 carats, framed and accented by round diamonds, size 5¾, signed Cartier, numbered 894050.

Accompanied by GIA report no. 14305421 dated April 5, 2005 stating that the diamond is F color, VVS1 clarity.

US\$ 40,000-60,000

PROPERTY FROM AN ESTATE, FLORIDA AND COLORADO

**DIAMOND BRACELET**

Of openwork geometric design, set with three marquise-shaped diamonds, framed with radiating baguette diamonds, further embellished with round and old European-cut pavé-set diamonds, length 7¼ inches; circa 1935.

US\$ 20,000-30,000



297

---

PROPERTY FROM THE COLLECTION OF A  
NEW YORK PHILANTHROPIST

**PAIR OF GOLD, EMERALD AND ENAMEL  
CUFFLINKS, DAVID WEBB**

Designed as gold lion's heads, set with cabochon emerald eyes and applied with orangy brown enamel, total gross weight approximately 15 dwts, *signed Webb*.

US\$ 2,000-3,000



298

---

PROPERTY FROM THE COLLECTION OF A  
NEW YORK PHILANTHROPIST

**PERIDOT, TURQUOISE, DIAMOND,  
RUBY AND ENAMEL CLIP-BROOCH**

Designed as a basilisk, its claws clutching an oval-shaped peridot weighing approximately 60.00 carats, the green enameled body studded with turquoise cabochons, the head, wing and tail pavé-set with round diamonds, the eye accented with a round ruby, gross weight approximately 63 dwts; *circa 1970*.

**LITERATURE**

*For a brooch of similar design by Donald Clafin, see Tiffany Fauna by John Loring, page 117.*

US\$ 10,000-15,000





PROPERTY FROM THE COLLECTION OF A  
NEW YORK PHILANTHROPIST

**GOLD NECKLACE**

Of lariat design, composed of two tubogas bands,  
terminating in two gold boules, gross weight  
approximately 85 dwts, *internal circumference*  
*16¼ inches, signed Weingrill, with Italian registry*  
*mark.*

US\$ 5,000-7,000



PROPERTY FROM THE COLLECTION OF A  
NEW YORK PHILANTHROPIST

**GOLD NECKLACE, DAVID WEBB**

Composed of hammered gold plaques featuring  
scroll motifs, gross weight approximately 120  
dwts, *internal circumference 13¼ inches, signed  
Webb.*

US\$ 12,000-15,000



301

---

PROPERTY FROM THE COLLECTION OF A  
NEW YORK PHILANTHROPIST

**GOLD AND EMERALD CLIP-BROOCH,  
DAVID WEBB**

Designed as a textured gold lion, the eyes set with  
cabochon emeralds, gross weight approximately  
37 dwts, *signed David Webb.*

US\$ 4,000-6,000



302

---

PROPERTY FROM THE COLLECTION OF A  
NEW YORK PHILANTHROPIST

**PAIR OF GOLD EARCLIPS, DAVID WEBB**

Each composed of four domed swirl motifs, gross  
weight approximately 27 dwts, *signed Webb.*

US\$ 3,000-5,000



303

---

PROPERTY FROM THE COLLECTION OF A  
NEW YORK PHILANTHROPIST

**PAIR OF MABÉ PEARL AND DIAMOND  
EARCLIPS, DAVID WEBB**

Set with two mabé pearls measuring  
approximately 16.7 x 16.7 mm and 16.7 x 16.4  
mm, within a square openwork frame accented  
by round diamonds, *signed Webb*.

US\$ 2,000-3,000



304

---

PROPERTY FROM THE COLLECTION OF A  
NEW YORK PHILANTHROPIST

**MOTHER-OF-PEARL, ENAMEL AND  
DIAMOND DRESS SET, DEAKIN &  
FRANCIS**

Comprising: a pair of cufflinks and three studs,  
each centered on a round mother-of-pearl disk  
topped with a round diamond, encircled by round  
diamonds alternating with black enamel, *signed D  
& F, England, with British hallmarks*.

*Please note this property cannot be shipped  
internationally due to endangered species  
materials.*

⦿ US\$ 5,000-7,000



PROPERTY FROM THE COLLECTION OF A  
NEW YORK PHILANTHROPIST

**CULTURED PEARL, JADE AND  
DIAMOND NECKLACE, TRIO**

Composed of two strands of cultured pearls  
measuring from approximately 8.5 to 7.9 mm,  
featuring two circular carved jade plaques,  
accented by round diamonds, *length 28 inches,*  
*with detachable 11 $\frac{3}{8}$ -inch section for variety of*  
*wear, signed Trio.*

US\$ 4,000-6,000



306

---

PROPERTY FROM THE COLLECTION OF A  
NEW YORK PHILANTHROPIST

**EMERALD, SAPPHIRE, RUBY AND  
DIAMOND CLIP-BROOCH, DAVID WEBB**

Of openwork floral design, centering a cabochon emerald weighing 6.58 carats, framed by oval-shaped rubies, round sapphires and cabochon emeralds, further highlighted with round diamonds, *signed Webb, fitted with pendant hook.*

US\$ 15,000-20,000



307

---

PROPERTY FROM THE COLLECTION OF A  
NEW YORK PHILANTHROPIST

**PAIR OF RUBY, EMERALD, SAPPHIRE,  
DIAMOND AND ENAMEL EARCLIPS,  
DAVID WEBB**

Featuring ruby, emerald and sapphire cabochons, framed and accented by round and single-cut diamonds, highlighted with black enamel, *signed Webb.*

US\$ 8,000-12,000



PROPERTY FROM THE COLLECTION OF A  
NEW YORK PHILANTHROPIST

**RUBY, ENAMEL AND DIAMOND  
BRACELET, DAVID WEBB**

Designed as a bull composed of gold and  
platinum applied with black enamel, accented  
with cabochon rubies and round diamonds,  
*internal circumference 5¾ inches, signed Webb.*

US\$ 25,000-35,000



PROPERTY FROM THE COLLECTION OF A  
NEW YORK PHILANTHROPIST

**GOLD, DIAMOND AND EMERALD  
PENDANT-BROOCH, DAVID WEBB**

Designed as the face of a lion, accented by old  
mine-cut diamonds and an emerald baguette,  
gross weight approximately 45 dwts, *signed  
Webb*.

US\$ 5,000-7,000





310

---

PROPERTY FROM THE COLLECTION OF A  
NEW YORK PHILANTHROPIST

**PAIR OF GOLD, TIGER'S-EYE QUARTZ  
AND LAPIS LAZULI CUFFLINKS, VAN  
CLEEF & ARPELS**

Of checkerboard design, set with square sections  
of lapis lazuli and tiger's-eye quartz, bordered  
with gold ropetwist, *signed VCA, numbered  
12V348-7.*

US\$ 3,000-5,000



311

---

PROPERTY FROM THE COLLECTION OF A  
NEW YORK PHILANTHROPIST

**PAIR OF GOLD EARCLIPS, TIFFANY  
& CO.**

Of hoop design, composed of textured gold,  
total gross weight approximately 11 dwts, *signed  
Tiffany & Co., Italy, with Italian assay marks.*

US\$ 1,500-2,000





312

PROPERTY FROM THE COLLECTION OF A NEW YORK PHILANTHROPIST

**GOLD AND DIAMOND NECKLACE,  
DAVID WEBB**

Suspending a marquise-shaped diamond weighing 3.04 carats, flanked by two tapered baguette diamonds, the gold chain composed of lozenge-shaped links, accented by round diamonds, length 14¾ inches, signed Webb.

Accompanied by GIA report no. 5202505934 dated August 6, 2019 stating that the diamond weighing 3.04 carats is H color, VVS2 clarity. Together with the original working diagram stating that the diamond may be improvable.

US\$ 18,000-22,000

313 No Lot

314

---

PROPERTY FROM THE COLLECTION OF A NEW  
YORK PHILANTHROPIST

**PAIR OF DIAMOND EARCLIPS AND  
JACKETS, THE JACKETS BY DAVID  
WEBB**

Composed of clusters of marquise and pear-  
shaped diamonds, fitted with jackets of foliate  
design set with round diamonds, *the jackets*  
*signed Webb.*

US\$ 12,000-15,000



315

---

PROPERTY FROM THE COLLECTION OF A  
NEW YORK PHILANTHROPIST

**GOLD, ROCK CRYSTAL, RUBY AND  
DIAMOND CLIP-BROOCH, DAVID WEBB**

Designed as a frog, the body set with a pear-shaped rock crystal, the eyes set with cabochon rubies, highlighted with round diamonds, in a hammered gold mounting, gross weight approximately 47 dwts, *signed Webb, with pendant loop.*

US\$ 8,000-12,000



316

---

PROPERTY FROM THE COLLECTION OF A  
NEW YORK PHILANTHROPIST

**PAIR OF GOLD, ROCK CRYSTAL AND  
DIAMOND EARCLIPS, DAVID WEBB**

Centering carved rock crystal cabochons, within  
geometric gold frames set with round diamonds,  
*signed Webb.*

US\$ 5,000-7,000



PROPERTY FROM THE COLLECTION OF A  
NEW YORK PHILANTHROPIST

**GOLD NECKLACE, DAVID WEBB**

Composed of openwork scalloped gold links,  
gross weight approximately 86 dwts, *length*  
*25½ inches, with detachable 8¾-inch section for*  
*variety of wear, with pendant loop, signed Webb.*

US\$ 7,000-9,000



PROPERTY FROM THE COLLECTION OF A  
NEW YORK PHILANTHROPIST

**GOLD AND DIAMOND COLLAR-  
NECKLACE, DAVID WEBB**

Of hinged design, the hammered gold ropetwist  
terminating in scroll motifs set with round  
diamonds, *internal circumference 12¾ inches,*  
*signed Webb.*

US\$ 15,000-20,000



PROPERTY FROM THE COLLECTION OF A  
NEW YORK PHILANTHROPIST

**PAIR OF GOLD AND TIGER'S-EYE  
QUARTZ CUFFLINKS, DAVID WEBB**

Of mariner link design, set with tiger's-eye quartz  
segments, *signed Webb*.

US\$ 2,000-3,000



PROPERTY FROM THE COLLECTION OF A  
NEW YORK PHILANTHROPIST

**GOLD, ENAMEL AND DIAMOND  
NECKLACE, DAVID WEBB**

Designed as a series of tapered links applied with  
black enamel, set with bands of round diamonds,  
*length 14¾ inches, signed Webb. With signed  
pouch.*

US\$ 30,000-50,000





321

---

PROPERTY FROM THE COLLECTION OF A  
NEW YORK PHILANTHROPIST

**GOLD, JADE, ENAMEL AND DIAMOND  
CUFF-BRACELET, DAVID WEBB**

Of hinged design, the black enameled cuff  
terminating in two carved jade plaques, framed  
and accented by round diamonds, gross weight  
approximately 44 dwts, *internal circumference*  
*5<sup>7</sup>/<sub>8</sub> inches, signed Webb.*

US\$ 12,000-15,000



322

---

PROPERTY FROM THE COLLECTION OF A  
NEW YORK PHILANTHROPIST

**PAIR OF ENAMEL AND DIAMOND  
EARCLIPS, DAVID WEBB**

The black enameled arches topped with  
articulated buckle motifs set with round  
diamonds, *signed Webb.*

US\$ 8,000-12,000



323

PROPERTY FROM THE COLLECTION OF A  
NEW YORK PHILANTHROPIST

**DIAMOND, COLORED DIAMOND AND  
GEM-SET 'FISH LUNCHING ON A PEARL'  
CLIP-BROOCH, MARILYN COOPERMAN**

Designed as a fish pavé-set with a variety of round gemstones including diamonds, diamonds of brown and yellow hues, sapphires, yellow sapphires, emeralds and tsavorite garnets, the eye set with a cabochon moonstone, suspending a cultured pearl drop measuring approximately 15.3 x 12.3 mm, highlighted with carved emeralds, with maker's mark for Marilyn Cooperman.

*Please note the diamonds of yellow and brown hues have not been tested for natural origin of color.*

**LITERATURE**

*A brooch of similar design is illustrated in Understanding Jewellery by David Bennett and Daniela Mascetti, page 472.*

US\$ 7,000-9,000



324

PROPERTY FROM THE COLLECTION OF A  
NEW YORK PHILANTHROPIST

**JADE, EMERALD, RUBY, SAPPHIRE AND  
DIAMOND PENDANT-BROOCH, DAVID  
WEBB**

Featuring a carved jade plaque set with four carved emeralds, the central emerald framed and accented by round and cabochon rubies, topped by five carved sapphires, highlighted with round diamonds, *signed Webb*.

US\$ 10,000-15,000



325

---

PROPERTY FROM THE COLLECTION OF A  
NEW YORK PHILANTHROPIST

**CULTURED PEARL AND DIAMOND  
NECKLACE**

Composed of 29 cultured pearls measuring from  
approximately 16.2 to 13.1 mm, the clasp with  
rondelles set with round diamonds, *length 17¼  
inches.*

US\$ 7,000-9,000



326

---

PROPERTY OF A NEW YORK LADY

**PAIR OF RUBY AND DIAMOND  
EARCLIPS**

Of floral design, set throughout with oval-shaped rubies, the center accented by round diamonds.

US\$ 5,000-7,000



327

---

PROPERTY OF A LADY

**CITRINE AND DIAMOND 'BIRD ON A  
ROCK' BROOCH, SCHLUMBERGER FOR  
TIFFANY & CO.**

Set with a cushion-cut citrine, topped with a bird pavé-set with round diamonds, *signed Tiffany Schlumberger, one small gemstone missing.*

**LITERATURE**

*A brooch of similar design is illustrated in Tiffany Fauna by John Loring, pages 42-43.*

US\$ 10,000-15,000

328

---

PROPERTY OF A NEW YORK LADY

**DIAMOND BRACELET, HARRY  
WINSTON**

Composed of clusters of round and marquise-shaped diamonds, *length 6¾ inches, numbered 8293, with maker's mark for Jacques Timey. With signed pouch.*

US\$ 20,000-30,000



---

**329** SOLD WITHOUT RESERVE

**PURPLE SAPPHIRE AND DIAMOND  
RING**

Set with a cushion-cut pink-purple sapphire weighing 7.46 carats, framed with marquise-shaped diamonds, size 6.

*Accompanied by AGL report no. 1097185 dated November 16, 2018 stating that the reddish pink-purple sapphire is of East African origin, with no indications of heating.*

US\$ 8,000-12,000

330

---

PROPERTY FROM A COLLECTION, MEMPHIS  
TENNESSEE

**SAPPHIRE AND DIAMOND RING**

Centering a cushion-cut sapphire weighing  
30.56 carats, flanked by pear-shaped diamonds,  
accented by round diamonds, *size 6½*.

US\$ 30,000-50,000



331

---

**PAIR OF DIAMOND EARCLIPS, VAN  
CLEEF & ARPELS**

Designed as hoops pavé-set with round  
diamonds, *signed VCA, numbered 346H.7*.

US\$ 25,000-35,000



332

---

PROPERTY FROM A PRIVATE COLLECTION

**SAPPHIRE RING**

Set with a barrel-shaped sapphire weighing 28.26 carats, flanked by calibr -cut sapphires, within a geometric mounting, size 7, signed B.S.

*Accompanied by SSEF report no. 49116 dated July 25, 2007 stating that the sapphire is of Ceylon origin, with no indications of heating.*

US\$ 35,000-45,000



333

---

**PAIR OF SAPPHIRE AND DIAMOND EARRINGS**

Designed as hoops, set with oval-shaped sapphires, accented by round diamonds.

US\$ 15,000-20,000



THIS PAGE  
LOT 138



334

---

**PAIR OF GOLD AND OPAL EARCLIPS,  
GOSHWARA**

Designed as leaves, set with variously-shaped opals, surrounded by matte gold accents, *signed Goshwara*. Fitted with posts.

US\$ 7,000-9,000



335

---

PROPERTY OF A PRIVATE COLLECTOR  
**AQUAMARINE AND IOLITE RING,  
VERDURA**

Centering a cushion-cut aquamarine weighing approximately 5.30 carats, flanked by two similarly-cut iolites, size 6½, *signed Verdura*. With signed box.

US\$ 4,000-6,000

PROPERTY OF A LADY

**GOLD CHOKER-NECKLACE WITH FOUR  
GEM-SET BROOCH-PLAQUES, ANDREW  
GRIMA**

The textured gold necklace accompanied by four interchangeable brooch-plaques respectively set with an oval-shaped citrine, an amethyst cabochon, an oval-shaped opal and a baroque cultured pearl, accented with round diamonds, total gross weight approximately 128 dwts, *signed Grima, with maker's marks and British hallmarks; 1971.* With signed outer box.

US\$ 12,000-18,000



**GOLD, AMETHYST AND DIAMOND  
NECKLACE AND BRACELET, BULGARI**

Composed of alternating tumbled amethyst and polished gold beads, spaced by rondelles set with round diamonds, *necklace length 18¼ inches, adjustable, bracelet length 8¾ inches, signed Bulgari, necklace numbered ALZKS7, bracelet numbered ALZHP9, each with Italian registry marks.*

US\$ 20,000-30,000



PROPERTY OF A LADY, NEW YORK, NEW YORK

**GOLD 'CHAIN' NECKLACE AND GOLD  
AND DIAMOND PENDANT-BROOCH,  
DAVID WEBB**

The chain composed of hammered gold, gross weight approximately 134 dwts, *length 28 inches*, detachable into five segments for a variety of wear, signed Webb; with a detachable pendant-brooch designed as a stylized cross, composed of hammered gold, the center with a detachable star-shaped plaque pavé-set with round and single-cut diamonds, together with a hammered gold version of the star-shaped center, gross weight approximately 55 dwts, signed Webb. With signed pouch.

US\$ 18,000-22,000



339

---

PROPERTY FROM A PRIVATE COLLECTION

**GOLD AND EMERALD CUFF-BRACELET,  
DAVID WEBB**

The hinged hammered gold cuff topped with a molded gold alligator embellished with oval cabochon emerald eyes, gross weight approximately 67 dwts, *internal circumference 6½ inches, signed Webb.*

US\$ 8,000-12,000



340

---

**SAPPHIRE AND DIAMOND RING,  
ALEXANDRE REZA, FRANCE**

Set with an oval-shaped sapphire weighing 3.25 carats, beside a marquise-shaped diamond accented with round diamonds, within a gold mounting, size 6¾, *signed A. Reza, with French assay and maker's mark.*

*Accompanied by AGL report no. 1100698 dated April 30, 2019 stating that the sapphire is of Classic Burmese origin, with no indications of heating.*

US\$ 12,000-15,000



341

---

PROPERTY FROM A PRIVATE COLLECTION

**ENAMEL AND DIAMOND CUFF-  
BRACELET, DAVID WEBB**

Of hinged design, composed of fluted gold applied with black enamel, accented with round diamonds, *internal circumference 6 inches, signed Webb.*

US\$ 12,000-15,000



342

---

PROPERTY FROM A PRIVATE COLLECTION,  
DALLAS, TEXAS

**PAIR OF COLORED DIAMOND AND  
DIAMOND EARCLIPS**

Designed as shield-shaped surmounts bezel-set with marquise-shaped diamonds of light yellow hue, accented with near colorless round and baguette diamonds, suspending fringes of round diamonds of light yellow hue and near colorless marquise and pear-shaped diamonds. Fitted with posts.

*Please note that the diamonds of yellow hue have not been tested for natural origin of color.*

US\$ 18,000-22,000



343

---

PROPERTY OF A LADY, NEW YORK, NEW YORK  
**ENAMEL AND DIAMOND RING, DAVID  
WEBB**

The oval plaque pavé-set with round diamonds, framed with black enamel, accented with four radiating lines of round diamonds topped with baguette diamonds, *size 5¼, signed Webb.*

US\$ 6,000-8,000



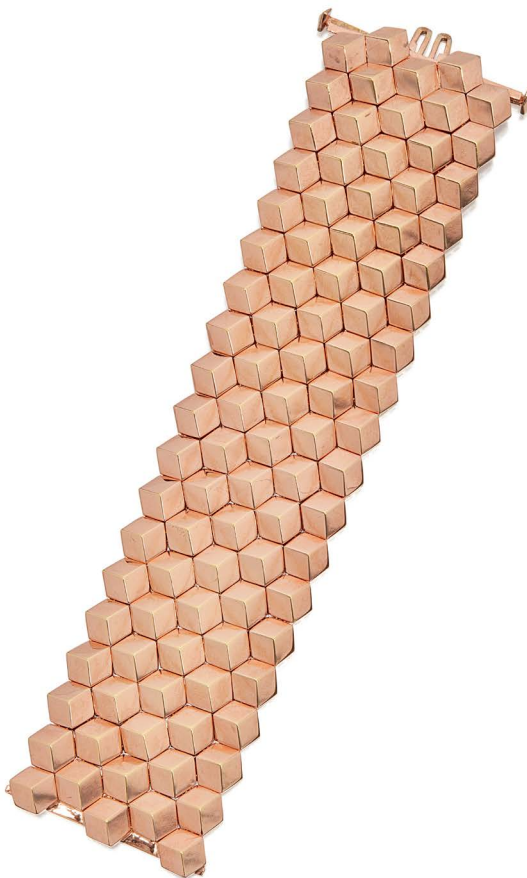
344

---

**PINK GOLD 'BRILLANTE' BRACELET,  
PAOLO COSTAGLI**

Composed of five rows of cube-like links, gross weight approximately 86 dwts, *length 6¾ inches, signed Paolo Costagli.*

US\$ 8,000-12,000





345

---

PROPERTY OF A DISTINGUISHED GENTLEMAN  
**RUBY AND DIAMOND BRACELET**

Centered on three cushion-cut rubies, surrounded by cabochon rubies, accented with round and pear-shaped diamonds, and two round diamond-set X-shaped motifs, on a mesh chain band, *length 7 inches.*

US\$ 5,000-7,000

346

---

PROPERTY OF A PRIVATE COLLECTOR

**DIAMOND RING**

Set east-west with a cut-cornered rectangular modified brilliant-cut diamond weighing 3.54 carats, size 6.

*Accompanied by GIA report no. 2205453652 dated July 16, 2019 stating that the diamond is I color, VS2 clarity.*

US\$ 12,000-18,000





### THREE GOLD AND DIAMOND BANGLE-BRACELETS

Comprising three bangle-bracelets, one of yellow gold, one of pink gold and one of white gold, each pavé-set with three rows of round diamonds, total gross weight approximately 35 dwts, *internal circumference 7 inches.*

US\$ 18,000-22,000



### 348

PROPERTY FROM AN ESTATE, FLORIDA AND COLORADO

### PAIR OF CULTURED PEARL, COLORED DIAMOND AND DIAMOND EARCLIPS

Of floral design, centered on button-shaped cultured pearls measuring approximately 13.7 x 13.7 x 11.4 mm, framed with petals pavé-set with round diamonds and round diamonds of yellow hue.

*Please note that the diamonds of yellow hue have not been tested for natural origin of color.*

US\$ 4,000-6,000



349

---

**GOLD, CORAL AND DIAMOND  
BRACELET, ALETTO BROTHERS**

Composed of arched links of alternating coral and gold, the clasp accented with round diamonds, length 7¼ inches, signed Aletto Bros. With signed box.

*Please note this property cannot be shipped internationally due to endangered species materials.*

• US\$ 25,000-35,000



350

---

**PAIR OF DIAMOND STUDS**

Set with two round diamonds each weighing approximately 2.00 carats.

US\$ 10,000-15,000

351

---

**GOLD AND GEM-SET CHARM  
BRACELET, CARTIER**

The gold link bracelet suspending seven detachable charms, four designed as gold watches, the crowns set with sapphires, an 'I Love You' spinner charm set with round diamonds, a panther similarly-set with round diamonds, and a case pavé-set with round pink sapphires and a round diamond thumbpiece, gross weight approximately 36 dwts, length 7 $\frac{7}{8}$  inches, the bracelet and each charm signed Cartier, bracelet numbered C15764, six charms with French assay and workshop marks, one with Italian registry mark.

US\$ 15,000-20,000



352

---

PROPERTY OF A COLLECTOR

**EMERALD AND DIAMOND RING**

Centering a sugarloaf cabochon emerald weighing approximately 7.35 carats, accented by trapeze-cut diamonds, size 6.

*Accompanied by AGL report no. 1097910 dated January 8, 2019 stating that the emerald is of Colombian origin, clarity enhancement: minor, type: modern.*

US\$ 12,000-15,000



353

---

**SPESSARTITE GARNET, SAPPHIRE AND  
DIAMOND CUFF-BRACELET, TIFFANY  
& CO.**

Featuring a stylized bird motif, the feathers set with numerous round spessartite garnets, accented by round sapphires and a pear-shaped sapphire, highlighted with round diamonds, gross weight approximately 58 dwts, *internal circumference 6 $\frac{3}{8}$  inches, signed Tiffany & Co., numbered 60698651.*

US\$ 30,000-40,000



354

---

**SAPPHIRE AND DIAMOND RING**

Set with a square emerald-cut sapphire weighing approximately 5.55 carats, between two window-shaped diamonds, size 5 $\frac{1}{4}$ .

US\$ 12,000-18,000



355

---

PROPERTY OF A LADY, MIAMI, FLORIDA

**PAIR OF GOLD AND DIAMOND  
EARCLIPS**

Set with two pear-shaped diamonds each weighing 3.01 carats, framed by numerous round diamonds, *with workshop marks*.

*Accompanied by two GIA reports:*

*No. 8456893 dated May 23, 1994 stating that the diamond is F color, VS1 clarity.*

*No. 8353877 dated July 8, 1993 stating that the diamond is F color, VS2 clarity.*

US\$ 60,000-80,000



356

---

**FANCY BROWN-YELLOW DIAMOND  
AND DIAMOND RING, PIAGET**

Centering a marquise-shaped Fancy Brown-Yellow diamond weighing 7.86 carats, flanked by tapered baguette diamonds, *size 7/4, signed Piaget*.

*Accompanied by GIA report no. 5202403097 dated July 5, 2019 stating that the diamond is Fancy Brown-Yellow, Natural Color, VS2 clarity.*

US\$ 30,000-50,000



357

---

PROPERTY OF A LADY, CHICAGO, ILLINOIS

**DIAMOND RING**

Set with a round diamond weighing 4.52 carats, between tapered baguette diamond shoulders, size 7<sup>3</sup>/<sub>4</sub>.

*Accompanied by GIA report no. 6204386802 dated June 18, 2019 stating that the diamond is J color, SI1 clarity.*

US\$ 20,000-30,000



358

---

**DIAMOND 'LOTUS' RING, VAN CLEEF & ARPELS, FRANCE**

Of hinged design, for wear as a single or two-finger ring, featuring a flower and leaves pavé-set with round diamonds, size 4<sup>3</sup>/<sub>4</sub>, signed VCA, numbered BL69014.48., with French assay and workshop marks.

US\$ 25,000-35,000



ALTERNATE VIEW

PROPERTY OF A CALIFORNIA LADY

**COLORED DIAMOND AND DIAMOND  
NECKLACE-BRACELET COMBINATION,  
M. GÉRARD**

Composed of interlocking textured gold links accented with diamond-shaped plaques pavé-set with round diamonds of alternating near colorless and yellow hue, *length 34 inches, detachable into four segments for a variety of wear, signed M. Gérard, numbered 2428, with French assay and maker's marks. With signed pouch.*

*Please note that the diamonds of yellow hue have not been tested for natural origin of color.*

US\$ 10,000-15,000

END OF SALE





## All Things Beautiful

PROPERTY FROM AN AMERICAN  
PRIVATE COLLECTION

TO BE SOLD IN CONTEMPORARY ART DAY  
AUCTION NEW YORK 15 NOVEMBER

**EXHIBITION FREE AND OPEN TO THE PUBLIC**

1334 YORK AVENUE, NEW YORK, NY 10021 ENQUIRIES +1 212 606 7254  
SOTHEBYS.COM/CONTEMPORARY #SOTHEBYSCONTEMPORARY

© 2019 ALEX KATZ/LICENCED BY VAGA AT ARTISTS RIGHTS SOCIETY (ARS), NY.

ALEX KATZ  
*January II, 1992*



DOWNLOAD SOTHEBY'S APP  
FOLLOW US @SOTHEBYSJEWELS



# Great design, pass it on.

Introducing Sotheby's Home.  
Sell your pre-loved furniture and  
home accessories where they'll  
be appreciated, 24/7.



Sotheby's EST. 1744

PROPERTY FROM  
**An Important Asian  
American Collection**

To be sold in:

**Fine Jewels**

Auction New York 25 September

**Magnificent Jewels and Noble Jewels**

Auction Geneva 11 & 13 November

ENQUIRIES JEWELRY +41 22 908 4849  
SOTHEBYS.COM/JEWELS #SOTHEBYSJEWELS

Sapphire and diamond bracelet, Cartier, 1927  
Estimate CHF 2,000,000–3,000,000

Pair of diamond ear clips, Cartier  
Estimate CHF 125,000–175,000



DOWNLOAD SOTHEBY'S APP  
FOLLOW US @SOTHEBYSJEWELS

## CONDITIONS OF SALE

The following Conditions of Sale and Terms of Guarantee are Sotheby's, Inc. and the Consignor's entire agreement with the purchaser and any bidders relative to the property listed in this catalogue.

The Conditions of Sale, Terms of Guarantee, the glossary, if any, and all other contents of this catalogue are subject to amendment by us by the posting of notices or by oral announcements made during the sale. The property will be offered by us as agent for the Consignor, unless the catalogue indicates otherwise.

By participating in any sale, you acknowledge that you are bound by these terms and conditions.

1. **As Is** Goods auctioned are often of some age. The authenticity of the Authorship (as defined below) of property listed in the catalogue is guaranteed as stated in the Terms of Guarantee and except for the Limited Warranty contained therein, all property is sold "AS IS" without any representations or warranties by us or the Consignor as to merchantability, fitness for a particular purpose, the correctness of the catalogue or other description of the physical condition, size, quality, rarity, importance, medium, frame, provenance, exhibitions, literature or historical relevance of any property and no statement anywhere, whether oral or written, whether made in the catalogue, an advertisement, a bill of sale, a salesroom posting or announcement, or elsewhere, shall be deemed such a warranty, representation or assumption of liability. We and the Consignor make no representations and warranties, express or implied, as to whether the purchaser acquires any copyrights, including but not limited to, any reproduction rights in any property. We and the Consignor are not responsible for errors and omissions in the catalogue, glossary, or any supplemental material. Sotheby's will not be responsible or liable for damage to frames and glass

coverings, regardless of the cause.

2. **Inspection** Prospective bidders should inspect the property before bidding to determine its condition, size, and whether or not it has been repaired or restored.

3. **Buyer's Premium** A buyer's premium will be added to the hammer price and is payable by the purchaser as part of the total purchase price. The buyer's premium is 25% of the hammer price up to and including \$400,000, 20% of any amount in excess of \$400,000 up to and including \$4,000,000, and 13.9% of any amount in excess of \$4,000,000.

4. **Withdrawal** We reserve the right to withdraw any property before the sale and shall have no liability whatsoever for such withdrawal.

5. **Per Lot** Unless otherwise announced by the auctioneer, all bids are per lot as numbered in the catalogue.

6. **Bidding** We reserve the right to reject any bid. The highest bidder acknowledged by the auctioneer will be the purchaser. The auctioneer has absolute and sole discretion in the case of error or dispute with respect to bidding, and whether during or after the sale, to determine the successful bidder, to re-open the bidding, to cancel the sale or to re-offer and re-sell the item in dispute. If any dispute arises after the sale, our sale record is conclusive. In our discretion we will execute order or absentee bids and accept telephone bids and online bids via BIDnow, eBay, Invaluable or other online platforms as a convenience to clients who are not present at auctions; Sotheby's is not responsible for any errors or omissions in connection therewith. Prospective bidders should also consult sothebys.com for the most up to date cataloguing of the property in this catalogue.

By participating in the sale, you represent and warrant that any bids placed by you, or on your behalf, are not the product of any collusive or other anti-competitive agreement and are otherwise

consistent with federal and state antitrust law.

By participating in the sale, you represent and warrant that:

(a) The bidder and/or purchaser is not subject to trade sanctions, embargoes or any other restriction on trade in the jurisdiction in which it does business as well as under the laws of the European Union, the laws of England and Wales, or the laws and regulations of the United States, and is not owned (nor partly owned) or controlled by such sanctioned person(s) (collectively, "Sanctioned Person(s)");

(b) Where acting as agent (with Sotheby's prior written consent), the principal is not a Sanctioned Person(s) nor owned (or partly owned) or controlled by Sanctioned Person(s); and

(c) The bidder and/or purchaser undertakes that none of the purchase price will be funded by any Sanctioned Person(s), nor will any party be involved in the transaction including financial institutions, freight forwarders or other forwarding agents or any other party be a Sanctioned Person(s) nor owned (or partly owned) or controlled by a Sanctioned Person(s), unless such activity is authorized in writing by the government authority having jurisdiction over the transaction or in applicable law or regulation.

In order to bid on "Premium Lots" you must complete the required Premium Lot pre-registration application. Sotheby's decision whether to accept any pre-registration application shall be final. You must arrange for Sotheby's to receive your pre-registration application at least three working days before the sale. Please bear in mind that we are unable to obtain financial references over weekends or public holidays.

Sotheby's may require such necessary financial references, guarantees, deposits and/or such other security, in its absolute discretion, as security for your bid(s).

7. **Online Bids via BIDnow or other Online Platforms:** Sotheby's may offer clients the opportunity to bid online via BIDnow, eBay, Invaluable or other Online Platforms for selected sales. By

participating in a sale via any of these Online Platforms, you acknowledge that you are bound by these Conditions of Sale as well as the Additional Terms and Conditions for Live Online Bidding ("Online Terms"). By participating in a sale via any Online Platform, Bidders accept the Online Terms, as well as the relevant Conditions of Sale. Online bidding may not be available for Premium Lots.

8. **Bids Below Reserve** If the auctioneer determines that any opening bid is below the reserve of the article offered, he may reject the same and withdraw the article from sale, and if, having acknowledged an opening bid, he determines that any advance thereafter is insufficient, he may reject the advance.

9. **Purchaser's Responsibility** Subject to fulfillment of all of the conditions set forth herein, on the fall of the auctioneer's hammer, the contract between the consignor and the purchaser is concluded, and the winning bidder thereupon will immediately pay the full purchase price or such part as we may require. Title in a purchased lot will not pass until Sotheby's has received the full purchase price in cleared funds. The purchaser's obligation to immediately pay the full purchase price or such part as we may require is absolute and unconditional and is not subject to any defenses, setoffs or counterclaims of any kind whatsoever. Sotheby's is not obligated to release a lot to the purchaser until title to the lot has passed and any earlier release does not affect the passing of title or the purchaser's unconditional obligation to pay the full purchase price. In addition to other remedies available to us by law, we reserve the right to impose from the date of sale a late charge of the annual percentage rate of Prime + 6% of the total purchase price if payment is not made in accordance with the conditions set forth herein. Please note Sotheby's reserves the right to refuse to accept payment from a source other than the buyer of record.

Unless otherwise agreed by Sotheby's, all property must be removed from our premises by the purchaser at his expense not later than 30 calendar days following its sale. Purchasers are reminded that Sotheby's liability for loss of or damage to sold property shall cease upon the earlier of (a) 30 calendar days after the date of the auction and (b) our release of the property to the purchaser or the purchaser's designated agent. Upon the expiration of such 30 calendar day period or upon such earlier release, as applicable: (i) the purchaser bears full liability for any and all loss of or damage to the property; (ii) the purchaser releases Sotheby's, its affiliates, agents and warehouses from any and all liability and claims for loss of or damage to the property; and (iii) the purchaser agrees to indemnify and hold Sotheby's, its affiliates, agents and warehouses harmless from and against any and all liability for loss of or damage to property and any all claims related to loss of or damage to the property as of and from and after the time Sotheby's liability for loss or damage to the property ceases in accordance with this paragraph. If any applicable conditions herein are not complied with by the purchaser, the purchaser will be in default and in addition to any and all other remedies available to us and the Consignor by law, including, without limitation, the right to hold the purchaser liable for the total purchase price, including all fees, charges and expenses more fully set forth herein, we, at our option, may (x) cancel the sale of that, or any other lot or lots sold to the defaulting purchaser at the same or any other auction, retaining as liquidated damages all payments made by the purchaser, or (y) resell the purchased property, whether at public auction or by private sale, or (z) effect any combination thereof. In any case, the purchaser will be liable for any deficiency, any and all costs, handling charges, late charges, expenses of both sales, our commissions on both sales at our regular rates, legal fees and expenses, collection fees and incidental damages.

We may, in our sole discretion, apply any proceeds of sale then due or thereafter becoming due to the purchaser from us or any affiliated company, or any payment made by the purchaser to us or any affiliated company, whether or not intended to reduce the purchaser's obligations with respect to the unpaid lot or lots, to the deficiency and any other amounts due to us or any affiliated companies. In addition, a defaulting purchaser will be deemed to have granted and assigned to us and our affiliated companies, a continuing security interest of first priority in any property or money of or owing to such purchaser in our possession, custody or control or in the possession, custody or control of any of our affiliated companies, in each case whether at the time of the auction, the default or if acquired at any time thereafter, and we may retain and apply such property or money as collateral security for the obligations due to us or to any affiliated company of ours. We shall have all of the rights accorded a secured party under the New York Uniform Commercial Code. You hereby agree that Sotheby's may file financing statements under the New York Uniform Commercial Code without your signature. Payment will not be deemed to have been made in full until we have collected good funds. Any claims relating to any purchase, including any claims under the Conditions of Sale or Terms of Guarantee, must be presented directly to Sotheby's. In the event the purchaser fails to pay any or all of the total purchase price for any lot and Sotheby's nonetheless elects to pay the Consignor any portion of the sale proceeds, the purchaser acknowledges that Sotheby's shall have all of the rights of the Consignor to pursue the purchaser for any amounts paid to the Consignor, whether at law, in equity, or under these Conditions of Sale.

**10. Reserve** All lots in this catalogue are offered subject to a reserve, which is the confidential minimum hammer price at which a lot will be sold. No reserve will exceed the low presale estimate stated in the catalogue, or as

amended by oral or posted notices. We may implement such reserve by opening the bidding on behalf of the Consignor and may bid up to the amount of the reserve, by placing successive or consecutive bids for a lot, or bids in response to other bidders. In instances where we have an interest in the lot other than our commission, we may bid up to the reserve to protect such interest. In certain instances, the Consignor may pay us less than the standard commission rate where a lot is "bought-in" to protect its reserve.

**11. Tax** Unless exempted by law, the purchaser will be required to pay the combined New York State and local sales tax, any applicable compensating use tax of another state, and if applicable, any federal luxury or other tax, on the total purchase price. The rate of such combined tax is 8.875% in New York City and ranges from 7% to 8.625% elsewhere in New York.

**12. Export and Permits** It is the purchaser's sole responsibility to identify and obtain any necessary export, import, firearm, endangered species or other permit for the lot. Any symbols or notices in the sale catalogue reflect Sotheby's reasonable opinion at the time of cataloguing and are for bidders' general guidance only; Sotheby's and the Consignor make no representations or warranties as to whether any lot is or is not subject to export or import restrictions or any embargoes.

**13. Governing Law and Jurisdiction** These Conditions of Sale and Terms of Guarantee, as well as bidders', the purchaser's and our respective rights and obligations hereunder, shall be governed by and construed and enforced in accordance with the laws of the State of New York. By bidding at an auction, whether present in person or by agent, order bid, telephone, online or other means, all bidders including the purchaser, shall be deemed to have consented to the exclusive jurisdiction of the state courts of, and the federal courts sitting in, the State of New York. All parties agree, however, that Sotheby's shall retain the right to bring

proceedings in a court other than the state and federal courts sitting in the State of New York.

**14. Packing and Shipping** We are not responsible for the acts or omissions in our packing or shipping of purchased lots or of other carriers or packers of purchased lots, whether or not recommended by us. Packing and handling of purchased lots is at the entire risk of the purchaser.

**15. Limitation of Liability** In no event will the aggregate liability of Sotheby's and the consignor to a purchaser exceed the purchase price actually paid.

**16. Data Protection** Sotheby's will hold and process your personal information and may share it with its subsidiaries and affiliates for use as described in, and in line with, Sotheby's Privacy Policy published on Sotheby's website at [www.sothebys.com](http://www.sothebys.com) or available on request by email to [enquiries@sothebys.com](mailto:enquiries@sothebys.com)

Under European data protection laws, a client may object, by request and free of charge, to the processing of their information for certain purposes, including direct marketing, and may access and rectify personal data relating to them and may obtain more information about Sotheby's data protection policies by writing to Sotheby's, 34-35 New Bond Street, London W1A 2AA, or 1334 York Avenue, New York, NY 10021. Attn: Compliance, or emailing [enquiries@sothebys.com](mailto:enquiries@sothebys.com).

Please be aware that Sotheby's may film auctions or other activities on Sotheby's premises and that such recordings may be transmitted over the Internet via Sotheby's website, the eBay website, the Invaluable website and other Online Platforms. Telephone bids may be recorded.

Sotheby's use of information collected about eBay users may differ and is governed by the terms of the eBay Privacy Policy and Sotheby's on eBay Live Auction Platform Privacy Policy, which can be found on the Sotheby's on eBay Live Auction Website. Sotheby's use of information collected about Invaluable users may differ and is governed by the terms of the

Invaluable Privacy Policy and Sotheby's on Invaluable Online Platform Privacy Policy, which can be found on the Sotheby's on Invaluable Live Auction Website.

## TERMS OF GUARANTEE

As set forth below and in the Conditions of Sale, for all lots Sotheby's guarantees that the authorship, period, culture or origin (collectively, "Authorship") of each lot in this catalogue is as set out in the **BOLD** or **CAPITALIZED** type heading in the catalogue description of the lot, as amended by oral or written salesroom notes or announcements. Purchasers should refer to the Glossary of Terms, if any, for an explanation of the terminology used in the Bold or Capitalized type heading and the extent of the Guarantee. Sotheby's makes no warranties whatsoever, whether express or implied, with respect to any material in the catalogue other than that appearing in the Bold or Capitalized heading and subject to the exclusions below.

In the event Sotheby's in its reasonable opinion deems that the conditions of the Guarantee have been satisfied, it shall refund to the original purchaser of record the hammer price and applicable Buyer's Premium paid for the lot by the original purchaser of record.

This Guarantee is provided for a period of five (5) years from the date of the relevant auction, is solely for the benefit of the original purchaser of record at the auction and may not be transferred to any third party. To be able to claim under this Guarantee of Authorship, the original purchaser of record must: (i) notify Sotheby's in writing within three (3) months of receiving any information that causes the original purchaser of record to question the accuracy of the Bold or Capitalized type heading, specifying the lot number, date of the auction at which it was purchased and the reasons for such question; and (ii) return the Lot to Sotheby's at the original selling location in the same condition as at the date of sale to the original purchaser of record and be able to transfer good title

to the Lot, free from any third party claims arising after the date of such sale.

Sotheby's has discretion to waive any of the above requirements. Sotheby's may require the original purchaser of record to obtain at the original purchaser of record's cost the reports of two independent and recognized experts in the field, mutually acceptable to Sotheby's and the original purchaser of record. Sotheby's shall not be bound by any reports produced by the original purchaser of record, and reserves the right to seek additional expert advice at its own expense. It is specifically understood and agreed that the rescission of a sale and the refund of the original purchase price paid (the successful hammer price, plus the buyer's premium) is exclusive and in lieu of any other remedy which might otherwise be available as a matter of law, or in equity. Sotheby's and the Consignor shall not be liable for any incidental or consequential damages incurred or claimed, including without limitation, loss of profits or interest.

## ADDITIONAL TERMS AND CONDITIONS FOR LIVE ONLINE BIDDING

The following terms and conditions (the "Online Terms") provide important information related to live online bidding via BIDnow, eBay, Invaluable, and any other Online Platform through which bidding is made available ("Online Platforms").

These Conditions are in addition to and subject to the same law and our standard terms and conditions of sale, including the authenticity guarantee and any other terms and are not intended in any way to replace them. By participating in this sale via any Online Platform, you acknowledge that you are bound by the Conditions of Sale applicable in the relevant sale and by these additional Conditions.

1. The procedure for placing bids via Online Platforms is a one-step process: as soon as the "Bid Now" button is clicked, a bid is

submitted. By placing a bid via any Online Platform, you accept and agree that bids submitted in this way are final and that you will not under any circumstances be permitted to amend or retract your bid. If a successful bid is sent to Sotheby's from your computer, phone, tablet, or any other device, you irrevocably agree to pay the full purchase price, including buyer's premium and all applicable taxes and other applicable charges.

2. If you have the leading bid, it will be indicated on the screen with the statement "Bid with you" (on BIDNow) or "You're the highest bidder" (on eBay) or "Bid with you" (on Invaluable). If a bid is placed online simultaneously with a bid placed by a bidder in the room or on the telephone (a "floor" bid), the "floor" bid generally will take precedence; the auctioneer will have the final discretion to determine the successful bidder or to reopen bidding. The auctioneer's decision is final.

3. The next bidding increment is shown on the screen for your convenience. The auctioneer has discretion to vary bidding increments for bidders in the auction room and on the telephones, but bidders using Online Platforms may not be able to place a bid in an amount other than a whole bidding increment. All bidding for this sale will be in the domestic currency of the sale location, and online bidders will not be able to see the currency conversion board that may be displayed in the auction room.

4. The record of sale kept by Sotheby's will be taken as absolute and final in all disputes. In the event of a discrepancy between any online records or messages provided to you and the record of sale kept by Sotheby's, the record of sale will govern.

5. Online bidders are responsible for making themselves aware of all salesroom notices and announcements. All salesroom notices will be read by the auctioneer at the beginning, where appropriate, or during the sale prior to a relevant lot being offered for sale. Sotheby's recommends

that online bidders log on at least ten minutes before the scheduled start of the auction to ensure that you have heard all announcements made by the auctioneer at the beginning of the sale.

6. Sotheby's reserves the right to refuse or revoke permission to bid via Online Platforms and to remove bidding privileges during a sale.

7. Purchase information shown in the "Account Activity" section of BIDnow, the "Purchase History" section of the "My eBay" page on eBay and the "Account Activity" section of the "My Invaluable" page on Invaluable is provided for your convenience only. Successful bidders will be notified and invoiced by Sotheby's after the sale. In the event of any discrepancy between any online purchase information and the invoice sent to you by Sotheby's following the respective sale, the invoice prevails. Terms and conditions for payment and collection of property remain the same regardless of how the winning bid was submitted.

8. Sotheby's offers online bidding as a convenience to our clients. Sotheby's will not be responsible for any errors or failures to execute bids placed via Online Platforms, including, without limitation, errors or failures caused by (i) a loss of connection to the internet or to the BIDnow, eBay, Invaluable or other Online Platform software by either Sotheby's or the client; (ii) a breakdown or problem with the BIDnow, eBay, Invaluable or other Online Platform software; or (iii) a breakdown or problem with a client's internet connection, mobile network or computer. Sotheby's is not responsible for any failure to execute an online bid or for any errors or omissions in connection therewith.

9. Live online bidding via all Online Platforms will be recorded.

10. In the event of any conflict between these Online Terms and Sotheby's Conditions of Sale and Terms of Guarantee, Sotheby's Conditions of Sale and Terms of Guarantee will control.

11. In the event of any conflict between these Online Terms and any term in any agreement between the User and eBay, these Online Terms will control for purposes of all Sotheby's auctions.

12. In the event of any conflict between these Online Terms and any term in any agreement between the User and Invaluable, these Online Terms will control for purposes of all Sotheby's auctions.

## BUYING AT AUCTION

The following will help in understanding the auction buying process as well as some of the terms and symbols commonly used in an auction catalogue. All bidders should read the Conditions of Sale and Terms of Guarantee in this catalogue, as well as the Glossary or any other notices. By bidding at auction, bidders are bound by the Conditions of Sale and Terms of Guarantee, as amended by any oral announcement or posted notices, which together form the sale contract among Sotheby's, the seller (consignor) of the lot and any bidders, including the successful bidder (purchaser).

### 1. SYMBOL KEY

#### ☐ Reserves

Unless indicated by a box (☐), all lots in this catalogue are offered subject to a reserve. A reserve is the confidential minimum hammer price at which a lot will be sold. The reserve is generally set at a percentage of the low estimate and will not exceed the low estimate of the lot. If any lots in the catalogue are offered without reserve, such lots will be designated by a box (☐). If every lot in a catalogue is offered without a reserve, the Conditions of Sale will so state and this symbol will not be used for each lot.

#### ○ Guaranteed Property

The seller of lots with this symbol has been guaranteed a minimum price from one auction or a series of auctions. This guarantee may be provided by Sotheby's or jointly by Sotheby's and a third party.

Sotheby's and any third parties providing a guarantee jointly with Sotheby's benefit financially if a guaranteed lot is sold successfully and may incur a loss if the sale is not successful. If the Guaranteed Property symbol for a lot is not included in the printing of the auction catalogue, a pre-sale or pre-lot announcement will be made indicating that there is a guarantee on the lot.

#### △ Property in which Sotheby's has an Ownership Interest

Lots with this symbol indicate that Sotheby's owns the lot in whole or in part or has an economic interest in the lot equivalent to an ownership interest.

#### ⇒ Irrevocable Bids

Lots with this symbol indicate that a party has provided Sotheby's with an irrevocable bid on the lot that will be executed during the sale at a value that ensures that the lot will sell. The irrevocable bidder, who may bid in excess of the irrevocable bid, may be compensated for providing the irrevocable bid by receiving a contingent fee, a fixed fee or both. If the irrevocable bidder is the successful bidder, any contingent fee, fixed fee or both (as applicable) for providing the irrevocable bid may be netted against the irrevocable bidder's obligation to pay the full purchase price for the lot and the purchase price reported for the lot shall be net of any such fees. From time to time, Sotheby's may enter into irrevocable bid agreements that cover multiple lots. In such instances, the compensation Sotheby's will pay the irrevocable bidder is allocated to the lots for which the irrevocable bidder is not the successful purchaser. Under such circumstances, the total compensation to the irrevocable bidder will not exceed the total buyer's premium and other amounts paid to Sotheby's in respect of any lots for which the irrevocable bidder is not the successful bidder. If the irrevocable bid is not secured until after the printing of the auction catalogue, Sotheby's will notify bidders that there is an irrevocable bid on the lot by one or more of the following means: a pre-sale

or pre-lot announcement, by written notice at the auction or by including an irrevocable bid symbol in the e-catalogue for the sale prior to the auction. From time to time, Sotheby's or any affiliated company may provide the irrevocable bidder with financing related to the irrevocable bid. If the irrevocable bidder is advising anyone with respect to the lot, Sotheby's requires the irrevocable bidder to disclose his or her financial interest in the lot. If an agent is advising you or bidding on your behalf with respect to a lot identified as being subject to an irrevocable bid, you should request that the agent disclose whether or not he or she has a financial interest in the lot.

#### ∨ Interested Parties

Lots with this symbol indicate that parties with a direct or indirect interest in the lot may be bidding on the lot, including (i) the beneficiary of an estate selling the lot, or (ii) the joint owner of a lot. If the interested party is the successful bidder, they will be required to pay the full Buyer's Premium. In certain instances, interested parties may have knowledge of the reserve. In the event the interested party's possible participation in the sale is not known until after the printing of the auction catalogue, a pre-sale or pre-lot announcement will be made indicating that interested parties may be bidding on the lot.

#### ◎ Restricted Materials

Lots with this symbol have been identified at the time of cataloguing as containing organic material which may be subject to restrictions regarding import or export. The information is made available for the convenience of bidders and the absence of the symbol is not a warranty that there are no restrictions regarding import or export of the Lot; bidders should refer to Condition 12 of the Conditions of Sale. Please also refer to the section on Endangered Species in the information on Buying at Auction.

#### Π Monumental

Lots with this symbol may, in our opinion, require special handling or shipping services due to size

or other physical considerations. Bidders are advised to inspect the lot and to contact Sotheby's prior to the sale to discuss any specific shipping requirements.

#### ♀ Premium Lot

In order to bid on "Premium Lots" (♀ in print catalogue or ♀ in eCatalogue) you must complete the required Premium Lot pre-registration application. You must arrange for Sotheby's to receive your pre-registration application at least three working days before the sale. Please bear in mind that we are unable to obtain financial references over weekends or public holidays. Sotheby's decision whether to accept any pre-registration application shall be final. If your application is accepted, you will be provided with a special paddle number. If all lots in the catalogue are "Premium Lots", a Special Notice will be included to this effect and this symbol will not be used.

## 2. BEFORE THE AUCTION

**The Catalogue** A catalogue prepared by Sotheby's is published for every scheduled live auction and is available prior to the sale date. The catalogue will help familiarize you with property being offered at the designated auction. Catalogues may be purchased at Sotheby's or by subscription in any categories. For information, please call +1 212 606 7000 or visit sothebys.com. Prospective bidders should also consult sothebys.com for the most up to date cataloguing of the property in this catalogue.

**Estimates** Each lot in the catalogue is given a low and high estimate, indicating to a prospective buyer a range in which the lot might sell at auction. When possible, the estimate is based on previous auction records of comparable pieces. The estimates are determined several months before a sale and are therefore subject to change upon further research of the property, or to reflect market conditions or currency fluctuations. Estimates should not be relied upon as a representation or prediction of actual selling prices.

**Provenance** In certain circumstances, Sotheby's may print in the catalogue the history of ownership of a work of art if such information contributes to scholarship or is otherwise well known and assists in distinguishing the work of art. However, the identity of the seller or previous owners may not be disclosed for a variety of reasons. For example, such information may be excluded to accommodate a seller's request for confidentiality or because the identity of prior owners is unknown given the age of the work of art.

**Specialist Advice** Prospective bidders may be interested in specific information not included in the catalogue description of a lot. For additional information, please contact either a Sotheby's specialist in charge of the sale (all of whom are listed in the front of the catalogue), or Sotheby's Client Services Department. You may also request a condition report from the specialist in charge.

**The Exhibition** An exhibition of the auction property will be held the week prior to the auction on the days listed in the front of the catalogue. There you will have the opportunity to view, inspect and evaluate the property yourself, or with the help of a Sotheby's specialist.

**Salesroom Notices** Salesroom notices amend the catalogue description of a lot after our catalogue has gone to press. They are posted in the viewing galleries and salesroom or are announced by the auctioneer. Please take note of them.

**Registration** Sotheby's may require such necessary financial references, guarantees, deposits and/or such other security, in its absolute discretion, as security for your bid. If you are not successful on any lot, Sotheby's will arrange for a refund (subject to any right of set off) of the deposit amount paid by you without interest within 14 working days of the date of the sale. Any exchange losses or fees associated with the refund shall be borne by you. Registration to bid on Premium Lots must be done at least 3 business days prior to the sale.

### 3. DURING THE AUCTION

**The Auction** Auctions are open to the public without any admission fee or obligation to bid. The auctioneer introduces the objects for sale — known as "lots" — in numerical order as listed in the catalogue. Unless otherwise noted in the catalogue or by an announcement at the auction, Sotheby's acts as agent on behalf of the seller and does not permit the seller to bid on his or her own property. It is important for all bidders to know that the auctioneer may open the bidding on any lot by placing a bid on behalf of the seller. The auctioneer may further bid on behalf of the seller, up to the amount of the reserve, by placing responsive or consecutive bids for a lot. The auctioneer will not place consecutive bids on behalf of the seller above the reserve.

**Bidding in Person** If you would like to bid, you must register for a paddle upon entering the salesroom. The paddle is numbered so as to identify you to the auctioneer. To register, you will need a form of identification such as a driver's license, a passport or some other type of government issued identification. If you are a first-time bidder, you will also be asked for your address, phone number and signature in order to create your account. If you are bidding for someone else, you will need to provide a letter from that person authorizing you to bid on that person's behalf. Issuance of a bid paddle is in Sotheby's sole discretion.

Once the first bid has been placed, the auctioneer asks for higher bids, in increments determined by the auctioneer. To place your bid, simply raise your paddle until the auctioneer acknowledges you. You will know when your bid has been acknowledged; the auctioneer will not mistake a random gesture for a bid.

If you wish to register to bid on a Premium Lot, please see the paragraph above.

All lots sold will be invoiced to the name and address in which the paddle has been registered and cannot be transferred to other names and addresses. Sotheby's

reserves the right to refuse to accept payment from a source other than the buyer of record.

**Absentee Bidding** If it is not possible for you to attend the auction in person, you may place your bid ahead of time. In the back of every catalogue there is an absentee bid form, which you can use to indicate the item you wish to bid on and the maximum bid you are willing to make. Return the completed absentee bid form to Sotheby's either by mail or fax. When the lot that you are interested in comes up for sale, a Sotheby's representative will execute the bid on your behalf, making every effort to purchase the item for as little as possible and never exceeding your limit. This service is free and confidential. For detailed instructions and information, please see the Absentee Bid Form and Guide for Absentee Bidders instructions at the back of this catalogue.

**Telephone Bidding** In some circumstances, we offer the ability to place bids by telephone live to a Sotheby's representative on the auction floor. Please contact the Bid Department prior to the sale to make arrangements or to answer any questions you may have. Telephone bids are accepted only at Sotheby's discretion and at the caller's risk. Calls may also be recorded at Sotheby's discretion. By bidding on the telephone, prospective buyers consent thereto.

**Online Bidding** If you cannot attend the auction, it may be possible to bid online via BIDnow, eBay, Invaluable or other Online Platforms for selected sales. This service is free and confidential. For information about registering to bid via BIDnow, please see [www.sothebys.com](http://www.sothebys.com). For information about registering to bid on eBay, please see [www.ebay.com/sothebys](http://www.ebay.com/sothebys). For information about registering to bid on Invaluable, please see [www.invaluable.com/invaluable/help.cfm](http://www.invaluable.com/invaluable/help.cfm). Bidders utilizing any online platform are subject to the Online Terms as well as the relevant Conditions of Sale. Online bidding may not be available for Premium Lots.

**Employee Bidding** Sotheby's employees may bid in a Sotheby's auction only if the employee does not know the reserve and if the employee fully complies with Sotheby's internal rules governing employee bidding.

**US Economic Sanctions** The United States maintains economic and trade sanctions against targeted foreign countries, groups and organizations. There may be restrictions on the import into the United States of certain items originating in sanctioned countries, including Cuba, Iran, North Korea and Sudan. The purchaser's inability to import any item into the US or any other country as a result of these or other restrictions shall not justify cancellation or rescission of the sale or any delay in payment. Please check with the specialist department if you are uncertain as to whether a lot is subject to these import restrictions, or any other restrictions on importation or exportation.

**Hammer Price and the Buyer's Premium** For lots which are sold, the last price for a lot as announced by the auctioneer is the hammer price. A buyer's premium will be added to the hammer price and is payable by the purchaser as part of the total purchase price. The buyer's premium will be the amount stated in the Conditions of Sale.

**Currency Board** As a courtesy to bidders, a currency board is operated in many salesrooms. It displays the lot number and current bid in both U.S. dollars and foreign currencies. Exchange rates are approximations based on recent exchange rate information and should not be relied upon as a precise invoice amount. Sotheby's assumes no responsibility for any error or omission in foreign or United States currency amounts shown.

**Results** Successful absentee bidders will be notified after the sale. Absentee bidders will receive a list of sale results if they enclose a stamped self-addressed envelope with their absentee bid form. Printed lists of auction

prices are available at our galleries approximately three weeks following each auction and are sent on request to catalogue purchasers and subscribers. Results may also be obtained online at sothebys.com.

**International Auctions** If you need assistance placing bids, obtaining condition reports or receiving auction results for a Sotheby's sale outside the United States, please contact our International Client Services Department.

#### 4. AFTER THE AUCTION

**Payment** If your bid is successful, you can go directly to Post Sale Services to make payment arrangements. Otherwise, your invoice will be mailed to you. The final price is determined by adding the buyer's premium to the hammer price on a per-lot basis. Sales tax, where applicable, will be charged on the entire amount. Payment is due in full immediately after the sale. However, under certain circumstances, Sotheby's may, in its sole discretion, offer bidders an extended payment plan. Such a payment plan may provide an economic benefit to the bidder. Credit terms should be requested at least one business day before the sale. However, there is no assurance that an extended payment plan will be offered. Please contact Post Sale Services or the specialist in charge of the sale for information on credit arrangements for a particular lot. Please note that Sotheby's will not accept payments for purchased lots from any party other than the purchaser, unless otherwise agreed between the purchaser and Sotheby's prior to the sale.

**Payment by Cash** It is against Sotheby's general policy to accept payments in the form of cash or cash equivalents.

**Payment by Credit Cards** Sotheby's accepts payment by credit card for Visa, MasterCard, and American Express only. Credit card payments may not exceed \$50,000 per sale. Payment by credit card may be made (a) online

at <https://www.sothebys.com/en/invoice-payment.html>, (b) by calling in to Post Sale Services at +1 212 606 7444, or (c) in person at Sotheby's premises at the address noted in the catalogue.

**Payment by Check** Sotheby's accepts (a) personal checks and (b) certified, banker's draft and cashier's checks drawn in US Dollars with a face amount of over \$10,000 (made payable to Sotheby's). While personal and company checks are accepted, property will not be released until such checks have cleared, unless you have a pre-arranged check acceptance agreement. Application for check clearance can be made through the Post Sale Services.

Please note that certified checks, banker's drafts and cashier's checks are accepted at Sotheby's discretion and provided they are issued by a reputable financial institution governed by anti-money laundering laws. Instruments not meeting these requirements will be treated as "cash equivalents" and subject to the constraints noted in the prior paragraph titled "Payment By Cash".

**Payment by Wire Transfer** To pay for a purchase by wire transfer, please refer to the payment instructions on the invoice provided by Sotheby's or contact Post Sale Services to request instructions.

**Sales and Use Tax** New York sales tax is charged on the hammer price, buyer's premium and any other applicable charges on any property picked up or delivered in New York State, regardless of the state or country in which the purchaser resides or does business. Purchasers who wish to use their own shipper who is not a considered a "common carrier" by the New York Department of Taxation and Finance will be charged New York sales tax on the entire charge regardless of the destination of the property. Please refer to "Information on Sales and Use Tax

Related to Purchases at Auction" in the back of the catalogue.

**Collection and Delivery**  
Post Sale Services  
+ 1 212 606 7444  
FAX: + 1 212 606 7043  
uspostsaleservices@sothebys.com

Once your payment has been received and cleared, property may be released. Unless otherwise agreed by Sotheby's, all purchases must be removed by the 30th calendar day following a sale.

**Shipping Services** Sotheby's offers a comprehensive shipping service to meet all of your requirements. If you received a shipping quotation or have any questions about the services we offer please contact us.

**Collecting your Property** As a courtesy to purchasers who come to Sotheby's to collect property, Sotheby's will assist in the packing of lots, although Sotheby's may, in the case of fragile articles, choose not to pack or otherwise handle a purchase.

If you are using your own shipper to collect property from Sotheby's, please provide a letter of authorization and kindly instruct your shipper that they must provide a Bill of Lading prior to collection. Both documents must be sent to Post Sale Services prior to collection.

The Bill of Lading must include: the purchaser's full name, the full delivery address including the street name and number, city and state or city and country, the sale and lot number.

Sotheby's will contact your shipper within 24 hours of receipt of the Bill of Lading to confirm the date and time that your property can be collected. Property will not be released without this confirmation and your shipper must bring the same Bill of Lading that was faxed to Sotheby's when collecting. All property releases are subject to the receipt of cleared funds.

Please see the Conditions of Sale for further details.

**Endangered Species** Certain property sold at auction, for example, items made of or incorporating plant or animal materials such as coral, crocodile, ivory, whalebone, tortoiseshell, rhinoceros horn, rosewood, etc., irrespective of age or value, may require a license or certificate prior to exportation and additional licenses or certificates upon importation to another country. Sotheby's suggests that buyers check on their government wildlife import requirements prior to placing a bid. Please note that the ability to obtain an export license or certificate does not ensure the ability to obtain an import license or certificate in another country, and vice versa. It is the purchaser's responsibility to obtain any export or import licenses and/or certificates as well as any other required documentation. In the case of denial of any export or import license or of delay in the obtaining of such licenses, the purchaser is still responsible for making on-time payment of the total purchase price for the lot.

Although licenses can be obtained to export some types of endangered species, other types may not be exported at all, and other types may not be resold in the United States. Upon request, Sotheby's is willing to assist the purchaser in attempting to obtain the appropriate licenses and/or certificates. However, there is no assurance that an export license or certificate can be obtained. Please check with the specialist department or the Shipping Department if you are uncertain as to whether a lot is subject to these export/import license and certificate requirements, or any other restrictions on exportation.

**The Art Loss Register** As part of Sotheby's efforts to support only the legitimate art market and to combat the illegitimate market in stolen property, Sotheby's has retained the Art Loss Register to check all uniquely identifiable items offered for sale in this catalogue that are estimated at more than the equivalent of US\$1,500 against the Art Loss Register's computerized database of objects reported as stolen or lost. The Art Loss Register is



pleased to provide purchasers with a certificate confirming that a search has been made. All inquiries regarding search certificates should be directed to The Art Loss Register, First Floor, 63-66 Hatten Garden, London EC1N 8LE or by email at [artloss@artloss.com](mailto:artloss@artloss.com). The Art Loss Register does not guarantee the provenance or title of any catalogued item against which they search, and will not be liable for any direct or consequential losses of any nature howsoever arising. This statement and the ALR's service do not affect your rights and obligations under the Conditions of Sale applicable to the sale.

---

## SELLING AT AUCTION

If you have property you wish to sell, Sotheby's team of specialists and client services representatives will assist you through the entire process. Simply contact the appropriate specialist (specialist departments are listed in the back of this catalogue), General Inquiries Department or a Sotheby's regional office representative for suggestions on how best to arrange for evaluation of your property.

**Property Evaluation** There are three general ways evaluation of property can be conducted:

### (1) In our galleries

You may bring your property directly to our galleries where our specialists will give you auction estimates and advice. There is no charge for this service, but we request that you telephone ahead for an appointment. Inspection hours are 9:30 am to 5 pm, Monday through Friday.

### (2) By photograph

If your property is not portable, or if you are not able to visit our galleries, you may bring in or send a clear photograph of each item. If you have a large collection, a representative selection of photographs will do. Please be sure to include the dimensions, artist's signature or maker's mark, medium, physical condition and any other relevant information. Our specialists will provide a free preliminary auction estimate

subject to a final estimate upon first-hand inspection.

### (3) In your home

Evaluations of property can also be made in your home. The fees for such visits are based on the scope and diversity of property, with travel expenses additional. These fees may be rebated if you consign your property for sale at Sotheby's. If there is considerable property in question, we can arrange for an informal "walkthrough."

Once your property has been evaluated, Sotheby's representatives can then help you determine how to proceed should you wish to continue with the auction process. They will provide information regarding sellers' commission rates and other charges, auction venue, shipping and any further services you may require.

---

## SOTHEBY'S SERVICES

Sotheby's also offers a range of other services to our clients beyond buying and selling at auction. These services are summarized below. Further information on any of the services described below can be found at [sothebys.com](http://sothebys.com).

### Valuations and Appraisals

Sotheby's Valuations and Appraisals Services offers advice regarding personal property assets to trusts, estates, and private clients in order to help fiduciaries, executors, advisors, and collectors meet their goals. We provide efficient and confidential advice and assistance for all appraisal and auction services. Sotheby's can prepare appraisals to suit a variety of needs, including estate tax and planning, insurance, charitable contribution and collateral loan. Our appraisals are widely accepted by the Internal Revenue Service, tax and estate planning professionals, and insurance firms. In the event that a sale is considered, we are pleased to provide auction estimates, sales proposals and marketing plans. When sales are underway, the group works closely with

the appropriate specialist departments to ensure that clients' needs are met promptly and efficiently.

**Financial Services** Sotheby's offers a wide range of financial services including advances on consignments, as well as loans secured by art collections not intended for sale.

**Museum Services** Tailored to meet the unique needs of museums and nonprofits in the marketplace, Museum Services offers personal, professional assistance and advice in areas including appraisals, deaccessions, acquisitions and special events.

**Corporate Art Services** Devoted to servicing corporations, Sotheby's Corporate Art Services Department can prepare appraisal reports, advise on acquisitions and deaccessions, manage all aspects of consignment, assist in developing arts-management strategies and create events catering to a corporation's needs.

---

## INFORMATION ON SALES AND USE TAX RELATED TO PURCHASES AT AUCTION

To better assist our clients, we have prepared the following information on Sales and Use Tax related to property purchased at auction.

### Why Sotheby's Collects Sales Tax

Virtually all State Sales Tax Laws require a corporation to register with the State's Tax Authorities and collect and remit sales tax if the corporation either establishes or maintains physical or economic presence within the state. In the states that impose sales tax, Tax Laws require an auction house, with such presence in the state, to register as a sales tax collector, and remit sales tax collected to the state. New York sales tax is charged on the hammer price, buyer's premium and any other applicable charges on any property picked up or delivered in New York, regardless of the state or country in which the purchaser resides or does business.

### Where Sotheby's Collects

**Sales Tax** Sotheby's is currently registered to collect sales tax in the following states: Alabama, Arkansas, California, Colorado, Connecticut, District of Columbia, Florida, Georgia, Hawaii, Idaho, Illinois, Indiana, Iowa, Kentucky, Maine, Maryland, Massachusetts, Michigan, Minnesota, Missouri, Nebraska, Nevada, New Jersey, New Mexico, New York, North Carolina, Ohio, Oklahoma, Pennsylvania, Rhode Island, South Carolina, Texas, Utah, Vermont, Virginia, Washington, Wisconsin and Wyoming. For any property collected or received by the purchaser in New York City, such property is subject to sales tax at the existing New York State and City rate of 8.875%.

### Sotheby's Arranged Shipping

If the property is delivered into any state in which Sotheby's is registered, Sotheby's is required by law to collect and remit the appropriate sales tax in effect in the state where the property is delivered.

### Client Arranged Shipping

Property collected from Sotheby's New York premises by a common carrier hired by the purchaser for delivery at an address outside of New York is not subject to New York Sales Tax, but if the property is delivered into any state in which Sotheby's is registered, Sotheby's is required by law to collect and remit the appropriate sales tax in effect in the state where the property is delivered. New York State recognizes shippers such as the United States Postal Service, United Parcel Service, FedEx, or the like as "common carriers". If a purchaser hires a shipper other than a common carrier to pick up property, Sotheby's will collect New York sales tax at a rate of 8.875% regardless of the ultimate destination of the goods. If a purchaser utilizes a freight-forwarder who is registered with the Transportation Security Administration ("TSA") to deliver property outside of the United States, no sales tax would be due on this transaction.

### Where Sotheby's is Not Required to Collect Sales Tax

Sotheby's is not required to collect sales tax on property delivered to states other than those listed above. If the property is delivered to a state where Sotheby's is not required to collect sales tax, it is the responsibility of the purchaser to self-assess any sales or use tax and remit it to taxing authorities in that state.

Sotheby's is not required to collect sales tax for property delivered to the purchaser outside of the United States.

### Restoration and Other Services

Regardless of where the property is subsequently transported, if any framing or restoration services are performed on the property in New York, it is considered to be a delivery of the property to the purchaser in New York, and Sotheby's will be required to collect the 8.875% New York sales tax.

### Certain Exemptions

Most states that impose sales taxes allow for specified exemptions to the tax. For example, a registered re-seller such as a registered art dealer may purchase without incurring a tax liability, and Sotheby's is not required to collect sales tax from such re-seller. The art dealer, when re-selling the property, may be required to charge sales tax to its client, or the client may be required to self-assess sales or use tax upon acquiring the property.

### Local Tax Advisors

As sales tax laws vary from state to state, Sotheby's recommends that clients with questions regarding the application of sales or use taxes to property purchased at auction seek tax advice from their local tax advisors.

## IMPORTANT NOTICES

### Property Collection

All property that is sold, has been bought in, or is to be returned to the consignor will remain at 1334 York Avenue for collection. Exceptions to this policy may include property considered to be oversized and monumental works of art. Invoices and statements will indicate your property's location. Refer to our Property Collection information at [www.sothebys.com/pickup](http://www.sothebys.com/pickup).

### Property Payment

All property must be paid in full before collection or release from any Sotheby's location. Payment must be made through Sotheby's New York Post Sale Services by way of our acceptable forms of payment methods mentioned on your invoice. To arrange for payment, please contact Post Sale Services at +1 212 606 7444 or [USPostSaleServices@sothebys.com](mailto:USPostSaleServices@sothebys.com). Payment will not be accepted at the offsite facility. Dealers and resale clients should fill out the appropriate forms where applicable or contact Post Sale Services with any questions.

**Loss and Liability** Unless otherwise agreed by Sotheby's, all sold property must be removed from any of our premises (including the SLP Warehouse) by the buyer at their expense no later than 30 calendar days following its sale. Buyers are reminded that Sotheby's liability for loss or damage to sold property shall cease no later than 30 calendar days after the date of the auction.

### Collection & Shipping

Where applicable, the SLP Warehouse requires 24 hours advanced notice for collection of property. Please arrange this through our Post Sale Services team at +1 212 606 7444 or [USPostSaleServices@sothebys.com](mailto:USPostSaleServices@sothebys.com).

For in-person collections at our offsite location, please alert Post Sale Services of your proposed collection date, ensure that all outstanding invoices have been paid for, and that you or your agent have the appropriate photo identification upon arrival.

If you are using your own shipper to collect property, please provide a letter of authorization and instruct your shipper to email their bill of lading to [billsoflading@sothebys.com](mailto:billsoflading@sothebys.com) and ensure the correct collection location is specified.

Sotheby's can arrange for delivery of your property through one of our contracted vendors or can coordinate pick up at our offsite location with you or your shipper directly. Please contact Post Sale Services at +1 212 606 7444 or [USPostSaleServices@sothebys.com](mailto:USPostSaleServices@sothebys.com) to start your collection process.

### Regarding Jewelry

Statements in the catalogue regarding the condition of lots in this sale usually appear in the description. However, the absence of any such reference does not imply that a lot is in perfect condition or completely free from wear or imperfections. Sotheby's will be pleased to offer condition reports of the lots to potential purchasers. Please call the jewelry representatives as set forth in the front of the catalogue.

Any gemological terms used in the catalogue have the same meanings as set forth in the Federal Trade Commission's guides for the jewelry, precious metals and pewter industries. A copy of these guidelines is available from Sotheby's upon request.

### Regarding Diamonds

Sotheby's shares the concerns expressed by the United Nations Security Council with respect to uncut diamonds potentially coming from Angola and Sierra Leone. We will comply fully with any obligations imposed in connection with the Security Council's resolutions regarding these matters.

### Treatment and Condition of Gemstones

Traditionally, gemstones have been treated by a variety of techniques to enhance color and generally to improve their appearance. Typically, rubies and sapphires have been heat treated and emeralds have been treated by oil or resin to improve color and clarity. These or other techniques, such as dyeing, irradiation, coating and impregnation, may be used on other gemstones.

Although it is widely believed that heat treatments are permanent, purchasers should assume that any treatment may not be permanent in nature and that over time special care of the stone may be required.

Prospective purchasers are reminded that, unless the catalogue description specifically states that a stone is natural, we have assumed that some form of treatment may have been used and that such treatment may not be permanent. Our presale estimates reflect this assumption.

To the extent that Sotheby's has laboratory reports containing specific information on the treatment of a stone, these reports are made available for review by potential purchasers. Available reports from internationally recognized gemological laboratories will be noted in the description of the item. New forms of treatments and new scientific methods to discern them are constantly being developed. Consequently, there may be a lack of consensus among laboratories as to whether gemstones have been treated, the extent of the treatment or the permanence of the treatment.

References in the catalogue descriptions to certificates or reports issued by gemological laboratories are included only for the information of bidders and Sotheby's accepts no responsibility for the accuracy, terms or information contained in such certificates or reports.

Statements in the catalogue regarding the condition of lots in this sale usually appear in the description. However, the absence of any such reference does not imply that a lot is in perfect condition or completely free from wear or imperfections. Sotheby's will be pleased to offer condition reports on all lots of the sale to potential purchasers. Please call the jewelry representatives set forth in the front of the catalogue.

**Gemological Certificates and Reports** References in the catalogue descriptions to certificates or reports issued by gemological laboratories are provided only for the information of bidders, and Sotheby's does not guarantee and accepts no responsibility for the accuracy, terms or information contained in such certificates or reports. Please also note that laboratories may differ in their assessment of a gemstone (including its origin and presence, type and extent of treatments) and their certificates or reports may contain different results.

**Certificates of Authenticity** Various manufacturers may not issue certificates of authenticity upon request. Except as specifically noted in the catalogue, Sotheby's will not be required to furnish the purchaser with a certificate of authenticity from the manufacturer at any time. Unless the requirements for a rescission of the sale under the Terms of Guarantee are satisfied, the failure of a manufacturer to issue a certificate will not constitute grounds to rescind the sale.

**Country of Origin** While Sotheby's attempts to obtain accurate information on the country of origin of the gemstones, in accordance with paragraph 1 of the Conditions of Sale, Sotheby's does not guarantee the correctness of the catalogue or other description of the gemstones including the country of origin.

**Stone Weights** Weights of stones printed in the catalogue and preceded by the words "stated to be," "about" or "approximately" are not guaranteed by Sotheby's. Prospective buyers are reminded that all lots are sold as shown.

**Regarding Condition of Watches** Prospective buyers should satisfy themselves by personal inspection as to the condition of each lot. If the prospective buyer is not able to inspect the piece, as a courtesy to our clients, we are pleased to provide an opinion of the condition of the property on request. However, since we are not professional watch restorers, any statement of opinion listed is purely subjective and is not a statement of fact. Condition reports may not specify all mechanical replacements or imperfections to the movement, case, dial, pendulum, separate base(s) or dome or any other replacements or additions to the lot. The absence of a condition report or the absence of a reference to damage in the catalogue does not imply that the lot is in good condition, working order or free from restoration or repair. Watches in water-resistant cases have no warranties that are made that the watches are currently water-resistant. Please note that we do not guarantee the authenticity of any individual component parts, such as wheels, hands, crowns, crystals, screws, bracelets and leather bands, since subsequent repairs and restoration work may have resulted in the replacement of original parts.

In addition, certain manufacturers will not service or repair pieces if all of the component parts are not original to the piece. The refusal of a manufacturer to service or repair a piece on this basis does not constitute grounds to rescind the sale under the Terms of Guarantee.

Furthermore, in reference to bands, we do not guarantee the material of manufacture. Please

be advised that the purchaser will be responsible for complying with any applicable export and import matters, particularly in relation to endangered species and the United States Department of Fish and Wildlife Services.

**Payments and Pick-Up** All payments to be made at Client Accounting, 1334 York Avenue. See below for dates and times.

Pick-Up: From the Jewelry Department, 6th Floor, 1334 York Avenue.

The schedule for property pick-up will be as follows:

Wednesday, 25 September  
10:00 am - 5:00 pm  
Thursday, 26 September  
10:00 am - 5:00 pm  
Friday, 27 September  
10:00 am - 5:00 pm  
Monday, 30 September  
10:00 am - 5:00 pm  
Tuesday, 1 October  
10:00 am - 5:00 pm

#### **Decorative Photography**

SquareMoose  
New York  
+1 212 643 2505

#### **Photography**

Pauline Shapiro  
Paul Shima  
Ellen Warfield

## Ring Sizes

Metric	French/Japanese	English	American
37.8252	-	A	1/2
38.4237	-	A1/2	3/4
39.0222	-	B	1
39.6207	-	B1/2	11/4
40.2192	-	C	11/2
40.8177	-	C1/2	13/4
41.4162	1	D	2
42.0147	2	D1/2	21/4
42.6132	-	E	21/2
43.2117	3	E1/2	23/4
43.8102	4	F	3
44.4087	-	F1/2	33/4
45.0072	5	G	31/4
45.6057	-	G1/2	31/2
46.2042	6	H	33/4
46.8027	-	H1/2	4
47.4012	7	I	41/4
47.9997	8	I1/2	41/2
48.5982	-	J	43/4
49.1967	9	J1/2	5
49.7952	10	K	51/4
50.3937	-	K1/2	51/2
50.9922	11	L	53/4
51.5907	-	L1/2	6
52.1892	12	M	61/4
52.7877	13	M1/2	61/2
53.4660	-	N	63/4
54.1044	14	N1/2	7
54.7428	15	O	7
55.3812	-	O1/2	71/4
56.0196	16	P	71/2
56.6580	-	P1/2	73/4
57.2964	17	Q	8

## Diamond Clarity Grading

Clarity grading relates to the impurities in a diamond. All clarity grading is carried out under a 10x magnification. The more impurities in a diamond the lower the price per carat.

FL	Flawless	No blemishes or inclusions
IF	Internally Flawless	No inclusions and only insignificant blemishes.
VVS1 & VVS2	Very Very Slightly Included	Extremely difficult to see, visible only from the back of the stone, or small and shallow enough to be removed easily by repolishing. In VVS2, inclusions are still very difficult to see.
VS1 & VS2	Very Slightly Included	Still difficult to see with the untrained eye.
SI1 & SI2	Slightly Included	Easy (SI1) or very easy (SI2) to see with a 10x lens. When these have been located with a 10x lens, look at the stone with the naked eye and the inclusions can sometimes be spotted
I1, I2 & I3	Imperfect	May be eye-visible face up without the aid of a lens. In I3, they may threaten the stones durability.

## Diamond Color Grading

GIA	
D	The top color grades, D, E, F, for a diamond is when it looks colorless against a white background.
E	
F	
G	In near colorless diamonds, G, H, I, there is a slight trace of color which will not be apparent to the untrained eye. Stones 0.50Ct or less will look colorless.
H	
I	
J	Diamonds graded J, K, L, will have notable traces of color. Small stones in this range will 'face up' colorless when mounted but larger stones will be tinted.
K	
L	
M	Diamonds graded M-Z will display a yellowish tint even to the untrained eye.
↓	
Z	
Z+	Z+ color grade indicates that the diamond is of fancy color and therefore fall into a different price bracket.

## Glossary of Terms

The following are examples of the terminology used in this catalogue. Please note that all statements made in this catalogue are made subject to the provisions of the Conditions of Sale and Terms of Guarantee printed in this catalogue:

### Signatures

#### **BOLD TYPE HEADING**

When the maker's name appears in Bold Type Heading in the catalogue description, in Sotheby's opinion, the piece is by the named jeweler.

#### **NAME OF JEWELER**

When we state the name of a maker in the catalogue description below the Bold Type Heading, we mean that, in Sotheby's opinion, although unsigned, the piece is by the named jeweler.

#### **MOUNTING BY**

When we state in the catalogue description below the Bold Type Heading "Mounting by\_\_\_\_\_"; we mean that, in Sotheby's opinion, the mounting is by the jeweler, and the gemstones were not supplied by the jeweler or the piece has been altered in some way after its manufacture.

## Diamond List

COLOR	CLARITY	CARAT WEIGHT	SHAPE	LOT
E	VVS1	6.17	Marquise	101
E	VS2	4.18	Round	213
F	VVS1	3.33	Cushion	295
F	VVS2	1.58	Oval	54
F	VS1	5.27	Cushion	162
G	VVS1	5.26	Cushion	153
H	VVS2 (Improvable)	3.04	Marquise	312
H	VS1	4.02	Emerald-Cut	171
I	VS2	3.54	Cut-Cornered Rectangular Modified Brilliant	346
J	SI2	10.09	Emerald-Cut	264
J	SI1	4.52	Round	357
K	VVS2	7.05	Round	288
K	VVS2	5.38	Round	270
K	VVS2	3.77	Round	100
K	VS1	25.07	Rectangular Step-Cut	104
K	VS1	3.25	Emerald-Cut	280
L	VS1	5.02	Round	281
D/D	IF/IF	0.29/0.28	Round	284
E/E	SI2/SI1	1.55/1.53	Cushion	194
F/F	VS1/VS2	3.01/3.01	Pear/Pear	355
F/F/G	VVS1/VS2/IF	5.00/1.06/1.04	Rectangular/Half-Moon/Half-Moon	148
Fancy Vivid Yellow	VS1	2.11	Emerald-Cut	139
Fancy Intense Yellow	VS1	3.08	Cushion	90
Fancy Yellow	VVS2	10.20	Shield Step-Cut	150
Fancy Yellow	VVS2 (Potential)	4.09	Cut-Cornered Rectangular Modified Brilliant	145
Fancy Yellow	SI1	9.10	Cut-Cornered Rectangular Modified Brilliant	230
Fancy Deep Brownish Yellow	VVS2	5.01	Cut-Cornered Rectangular Modified Brilliant	151
Fancy Brown-Yellow	VS2	7.86	Marquise	356
Fancy Yellow/Fancy Yellow	VS2/VS1 (Potential)	4.80/4.13	Heart	144

## Colored Stone List

RUBY					
LOT	SHAPE	CARAT WEIGHT	ORIGIN	TREATMENT	LAB
34	Cushion	3.72	Burmese	No Heat	Gübelin, AGL
95	Oval	2.86	Burmese	No Heat	AGL
190	Kite	11.20 x 8.10 x 4.85 mm	Thai	Heat	AGL
215	Cushion	3.05	Mozambique	No Heat	GRS
258	Oval	2.01	Burmese	No Heat	Gübelin, GRS, CDC
277	Cushion	2.33	Burmese	No Heat	AGL
290	Oval	4.15	Burmese	No Heat	AGL
292	Cushion	3.03	Thai	No Heat	AGL
294	Cushion	3.03	Burmese	No Heat	AGL

EMERALD					
LOT	SHAPE	CARAT WEIGHT	ORIGIN	TREATMENT	LAB
93	Emerald-Cut	8.85	Colombian	Minor; Traditional	AGL
103	Emerald-Cut	11.61	Colombian	Minor to Moderate; Modern	AGL, GIA
212	Emerald-Cut	Approx. 8.00	Colombian	Minor; Traditional	AGL
242	Cabochon	30.22	Colombian	Minor to Moderate; Modern	AGL
249	Emerald-Cut	Approx. 4.05, 2.00, 1.95	Zambian	Minor; Traditional	AGL
352	Cabochon	Approx. 7.35	Colombian	Minor; Traditional	AGL

SAPPHIRE					
LOT	SHAPE	CARAT WEIGHT	ORIGIN	TREATMENT	LAB
97	Cushion	13.90	Burmese	No Heat	AGL
157	Cabochon	Approx. 22.00	Ceylon	No Heat	AGL
160	Cushion	2.91	Kashmir	No Heat	AGL
195	Cushion	8.04	Ceylon	No Heat	AGL
217	Cushion	14.53	Ceylon	No Heat	AGL
240	Cabochon	10.1 x 8.9 x 6.8 mm	Thai	No Heat	AGL
255	Emerald-Cut	8.06	Burmese	No Heat	AGL
260	Cushion	3.78	Kashmir	No Heat	AGL
263	Octagonal	9.75	Burmese	No Heat	AGL
272	Cushion	2.52	Kashmir	No Heat	AGL
285	Emerald-Cut	8.69	Madagascar	Heat	AGL
332	Barrel-Shaped	28.26	Ceylon	No Heat	SSEF
340	Oval	3.25	Classic Burmese	No Heat	AGL

## International Departments

For a full listing of our offices and salerooms worldwide with detailed information on all of Sotheby's services, visit [sothebys.com](http://sothebys.com)

David Bennett  
Worldwide Chairman,  
International Jewelry Division

Gary Schuler  
Chairman,  
North and South America

Daniela Mascetti  
Chairman,  
Jewelry, Europe

Patti Wong  
Chairman, Asia  
Chairman, Sotheby's Diamonds

Andres White Correal  
Director of International Business  
Development

Yang Bu  
Senior Business Director,  
North America

Rebecca Spencer  
Senior Business Director,  
Europe

Jessica Whitman  
Business Director,  
London

Scott Roworth  
Senior Business Director,  
Asia

### NORTH AMERICA

#### NEW YORK

Gary Schuler  
Frank Everett  
Catharine Becket  
Robin Wright  
Alexander Eblen  
Kendall Reed  
Joanna Gong  
+1 212 606 7392

#### SAN FRANCISCO

Carol Elkins  
+1 415 772 9027

#### LOS ANGELES

Quig Bruning  
+1 310 274 0340  
Yvonne Teng  
+1 310 786 1864

Sotheby's Diamonds  
+1 212 894 1400

### EUROPE

#### GENEVA

David Bennett  
Daniela Mascetti  
Jessica Wyndham  
Olivier Wagner  
Benoit Repellin  
Prince Abdul'Aziz Toussoun ‡  
Associate, Europe  
+41 22 908 48 49

#### LONDON

Kristian Spofforth  
Nikita Binani  
Justin Roberts  
Johanna Seehuusen  
Andres White Correal  
+44 20 7293 6409

#### MILAN

Sara Miconi  
+39 02 295 00201  
Daniela Mascetti  
+41 22 908 48 49

#### PARIS

Magali Teisseire  
Gabriella Mantegani  
Tifenn Bouric  
+33 1 5305 5337

#### AMSTERDAM

Albertine Verlinde  
+31 20 550 2204

#### BRUSSELS

Marianna Lora  
+32 2 648 0080

#### LUGANO

Iris Fabbri  
+41 91 993 30 60

#### MADRID

Andres White Correal  
+34 91 576 5714

### MONACO

Douglas Walker  
+377 93 30 8880

### MUNICH

Heinrich Graf von Spreti  
+49 89 2909 5121

### ROME

Luisa Lepri  
+39 06 699 41791

### TEL AVIV

Sigal Mordechai  
+972 3 560 1666

### DUBAI

Sophie Stevens  
+44 78 4036 7595

### VIENNA

Andrea Jungmann  
+43 1 512 4772

### ASIA

#### HONG KONG

Yvonne Chu  
Cristel Tan  
Shanne Ng  
Diana Chang  
Kelly Mak  
Uni Kim  
Jane Ki  
Quek Chin Yeow ‡  
Flora Wong ‡  
Willy Wong ‡  
+852 2822 8112

Sotheby's Diamonds

Lisa Chow  
+852 2822 8113

#### BEIJING

Lei Tang  
+86 10 6408 8890

#### SHANGHAI

Rachel Shen  
+86 21 6288 7500

### INDONESIA

Jasmine Prasetio  
+62 21 5797 3603

### JAPAN

Aki Uemura  
+81 3 3230 2755

### MALAYSIA

Walter Cheah ‡  
+60 12 208 3917

### PHILIPPINES

Angela Hsu  
+63 917 815 0075

### SINGAPORE

Esther Seet  
+65 6732 8239

### TAIWAN

Wendy Lin  
Nicolette Chou  
+886 2 2757 6689

### THAILAND

Wannida Saetieo  
+66 2 286 0788

Consultant ‡





### 1. BROWSE

Go to [sothebys.com](https://sothebys.com) or the Sotheby's app to find works you are interested in.



### 2. REGISTER

Sign up to place bids.



### 3. BID

Bid before and during the auction, from anywhere in the world.

FOR ASSISTANCE WITH REGISTRATION AND BIDDING

[Enquiries@sothebys.com](mailto:Enquiries@sothebys.com)

**US** +1 212 606 7000 **UK** +44 (0) 20 7293 5000 **HK** +852 2822 8142

[sothebys.com/bidonline](https://sothebys.com/bidonline) FOLLOW US @SOTHEBYS

## Index of Makers

---

Maker	Lot	Maker	Lot
Aldo Cipullo	191	Ilias Lalaounis	209
Aletto Brothers	86, 349		
Alexandre Reza	190, 340	Lacloche Frères	28
		Liv Ballard	87
Buccellati	99, 112, 124, 126, 128, 129, 185, 186		
Bulgari	15, 16, 17, 18, 19, 20, 21, 22, 23, 24, 25, 31, 32, 106, 116, 134, 135, 138, 192, 244, 251, 337	M. Gerard	35
		M. Gérard	359
		Marianne Ostier	170, 199, 200, 201
Cartier	38, 55, 60, 75, 81, 83, 177, 193, 196, 247, 248, 295, 351	Marilyn Cooperman	323
		Mikimoto	66
Chanel	54, 121	Mounted by Mauboussin	158, 159
Chaumet	26		
Christopher Walling	115	Oscar Heyman & Brothers	215
David Webb	111, 113, 136, 137, 140, 142, 147, 164, 165, 167, 168, 169, 178, 183, 189, 250, 252, 257, 297, 300, 301, 302, 303, 306, 307, 308, 309, 312, 314, 315, 316, 317, 318, 319, 321, 322, 324, 338, 339, 341, 343	Paolo Costagli	344
		Patek Philippe	210
		Piaget	356
		Piranesi	249
		Raymond Yard	276, 281
Deakin & Francis	304		
		Sabbadini	114
Elizabeth Locke	123	Schlumberger for Tiffany & Co.	10, 327
		Seaman Schepps	13
Garrard & Co. Ltd.	174	Shreve, Crump & Low	34
Goshwara	85, 156, 229, 334		
Grima	336	Tiffany & Co.	11, 39, 41, 90, 98, 102, 109, 110, 153, 157, 162, 166, 181, 198, 202, 207, 287, 311, 353
Gumbiner	172	Tony Duquette	179, 180
		Trio	305
Hammerman Brothers	141		
Harry Winston	65, 218, 328	Van Cleef & Arpels	1, 2, 3, 4, 5, 6, 7, 8, 9, 12, 14, 74, 84, 107, 127, 146, 155, 241, 246, 310, 331, 358
Hemmerle	184, 188		
Henry Dunay	228	Verdura	58, 88, 197, 335
Herz-Belperron	89	Vhernier	221

**BOARD OF DIRECTORS**

Domenico De Sole

**Chairman of the Board**

The Duke of Devonshire

**Deputy Chairman of the Board**

Tad Smith

**President and**

**Chief Executive Officer**

Jessica Bibliowicz

Linus W. L. Cheung

Kevin Conroy

Daniel S. Loeb

Marsha E. Simms

Diana L. Taylor

Dennis M. Weibling

Harry J. Wilson

Michael J. Wolf

David Schwartz

**Corporate Secretary**

**SOTHEBY'S EXECUTIVE  
MANAGEMENT**

John Auerbach

**Art & Objects Division, Americas  
Digital Businesses, Worldwide**

Jill Bright

**Human Resources  
& Administration  
Worldwide**

Amy Cappellazzo

**Chairman**

**Fine Art Division**

Valentino D. Carlotto

**Business Development  
Worldwide**

John Cahill

**Chief Commercial Officer  
Worldwide**

Kevin Ching

**Chief Executive Officer  
Asia**

Ken Citron

**Operations & Chief  
Transformation Officer  
Worldwide**

Lauren Gioia

**Communications  
Worldwide**

Mike Goss

**Chief Financial Officer**

Jane Levine

**Chief Compliance Counsel  
Worldwide**

Jonathan Olsoff

**General Counsel  
Worldwide**

Jan Prasens

**Managing Director  
Europe, Middle East, Russia,  
India and Africa**

Allan Schwartzman

**Chairman**

**Fine Art Division**

Patti Wong

**Chairman**

**Asia**

**SOTHEBY'S INTERNATIONAL  
COUNCIL**

Robin Woodhead

**Chairman**

Jean Fritts

**Deputy Chairman**

John Marion

**Honorary Chairman**

Juan Abelló

Judy Hart Angelo

Anna Catharina Astrup

Nicolas Berggruen

Philippe Bertherat

Lavinia Borromeo

Dr. Alice Y.T. Cheng

Laura M. Cha

Halit Cingilioğlu

Jasper Conran

Henry Cornell

Quinten Dreesmann

Ulla Dreyfus-Best

Jean Marc Etlin

Tania Fares

Comte Serge de Ganay

Ann Getty

Yassmin Ghandehari

Charles de Gunzburg

Ronnie F. Heyman

Shalini Hinduja

Pansy Ho

Prince Amyn Aga Khan

Catherine Lagrange

Edward Lee

Jean-Claude Marian

Batia Ofer

Georg von Opel

Marchesa Laudomia Pucci Castellano

David Ross

Patrizia Memmo Ruspoli

Rolf Sachs

René H. Scharf

Biggi Schuler-Voith

Judith Taubman

Olivier Widmaier Picasso

The Hon. Hilary M. Weston,

CM, CVO, OOnt

**CHAIRMAN'S OFFICE****AMERICAS**

Lisa Dennison

Benjamin Doller

George Wachter

Thomas Bompard

Lulu Creel

Nina del Rio

Mari-Claudia Jimenez

Brooke Lampley

Gary Schuler

Simon Shaw

Lucian Simmons

August Uribe

**EUROPE**

Oliver Barker

Helena Newman

Mario Tavella

Alex Bell

Michael Berger-Sandhofer

David Bennett

Lord Dalmeny

Claudia Dwek

Edward Gibbs

George Gordon

Franka Haiderer

Henry Howard-Sneyd

Caroline Lang

Cedric Lienart

Daniela Mascetti

Wendy Phillips

Lord Poltimore

Samuel Valette

Albertine Verlinde

Roxane Zand

**ASIA**

Patti Wong

Nicolas Chow

Lisa Chow

Jen Hua

Yasuaki Ishizaka

Wendy Lin

Rachel Shen



Sotheby's EST. 1744  
Collectors gather here.